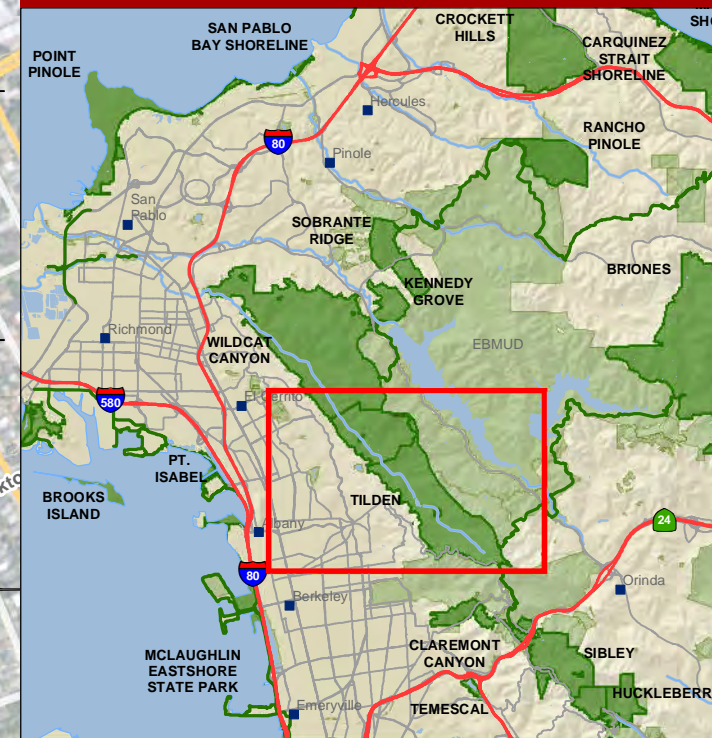


TILDEN REGIONAL PARK
TILDEN NATURE AREA
REGIONAL PARKS
BOTANIC GARDEN
 Contra Costa County

FIRE & PUBLIC SAFETY

EMERGENCY - DISPATCH (510) 881-1121
BUSINESS - PUBLIC SAFETY (510) 881-1833

VICINITY MAP

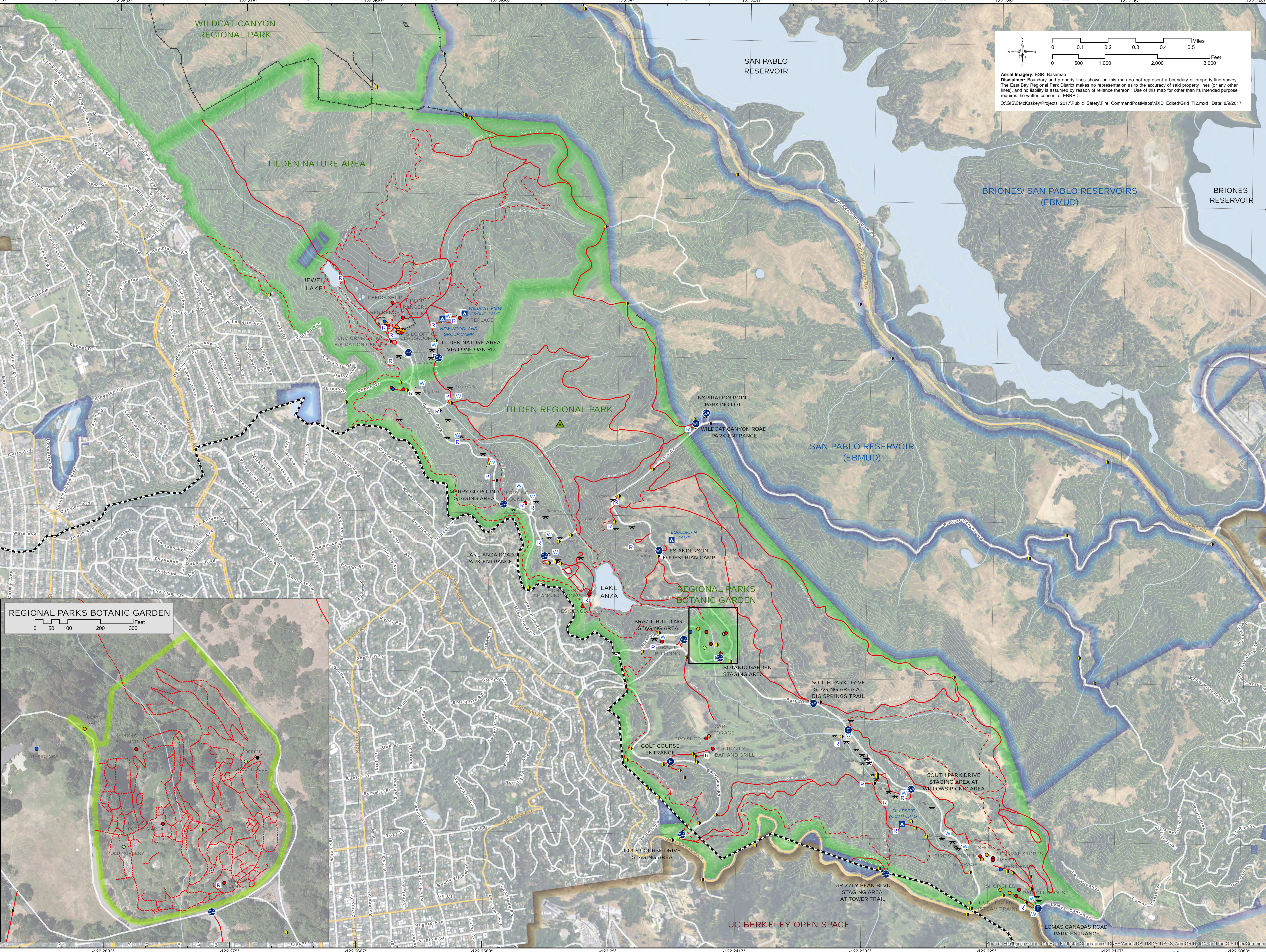
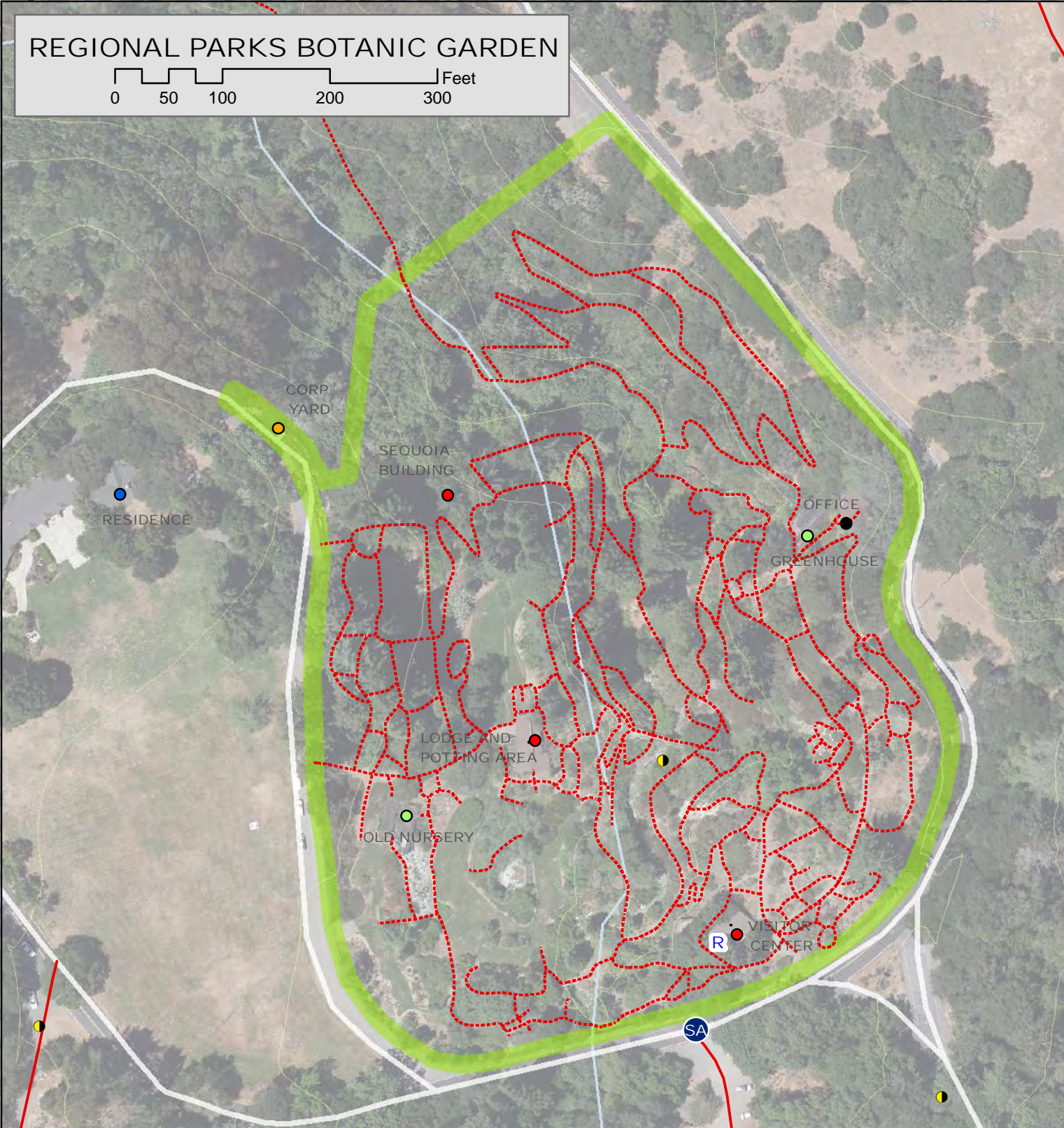


East Bay
 Regional Park District
 Planning/GIS Services

DIGITAL MAP

JUNE 2017 <http://www.ebparcs.org/about/firemaps>

- Roads and Trails (Paved/Unpaved)
- 4WD Roads
- Single Track Trails/Bridges/Connector
- Contours (30 ft)
- Park Entrance
- Regional Trail Entrance
- Staging Area
- Trail Staging Area
- Walk in Entrance/Gate
- Restrooms
- Drinking Fountains
- Campsites
- Daycamps
- Picnic Sites
- Residence
- Shop/Barn/Storage/Silo/Corp Yard
- Other Buildings
- Greenhouse/Nursery
- EBRPD Gates
- EBRPD Fences
- County Line
- EBRPD Land
- Misc. Land
- Water District Land



Aerial Imagery: ESRI Basemap
Disclaimer: Boundary and property lines shown on this map do not represent a boundary or property line survey. The East Bay Regional Park District makes no representation as to the accuracy of said property lines (or any other lines), and no liability is assumed by reason of reliance thereon. Use of this map for other than its intended purpose requires the written consent of EBRPD.
 O:\GIS\CMKaskey\Projects_2017\Public_Safety\Fire_CommandPostMaps\WXD_EditedGrid_T12.mxd Date: 8/9/2017