

Figure 1. Alternative A Site Plan

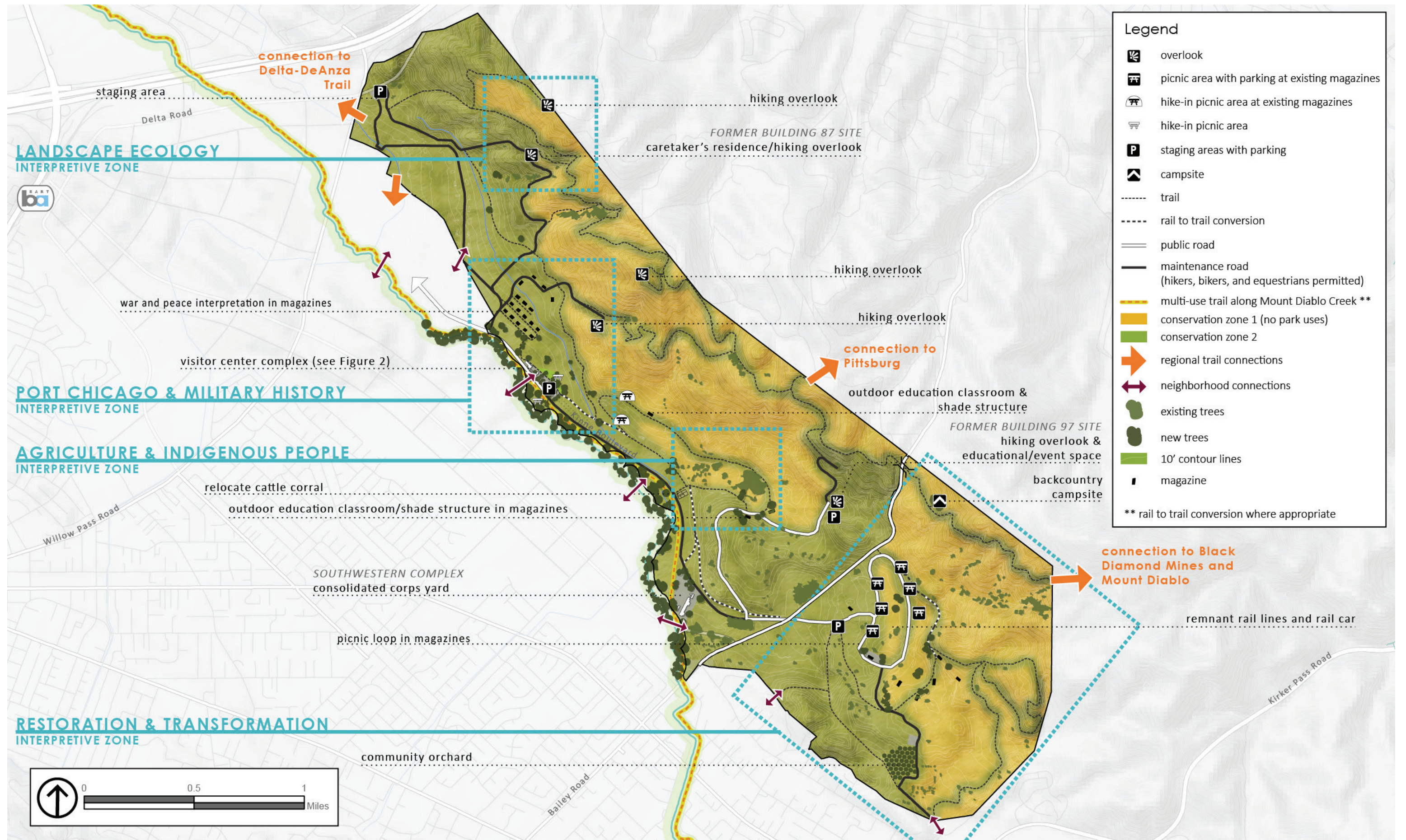


Figure 2. Alternative A Visitor Center Complex

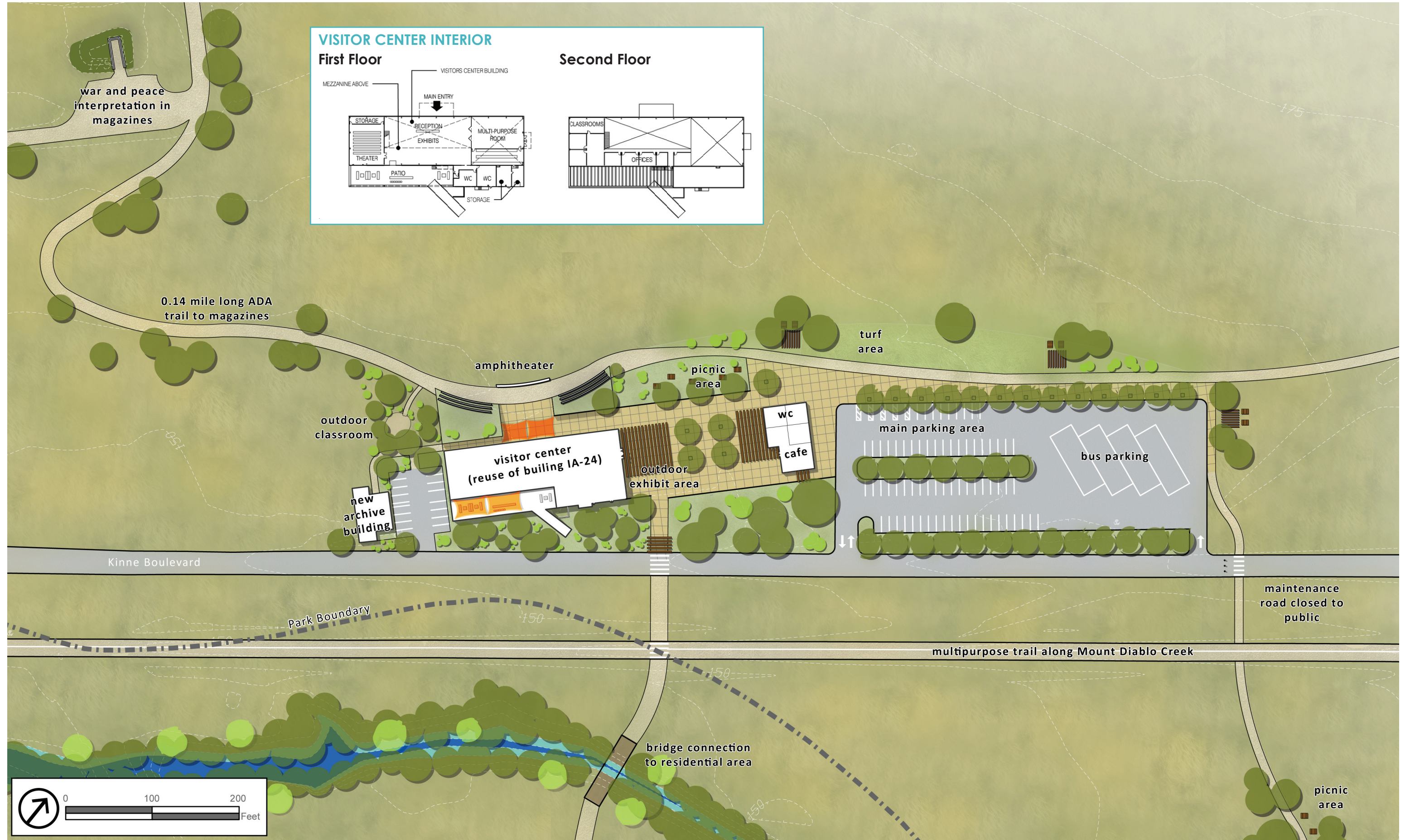


Figure 3. Alternative B Site Plan

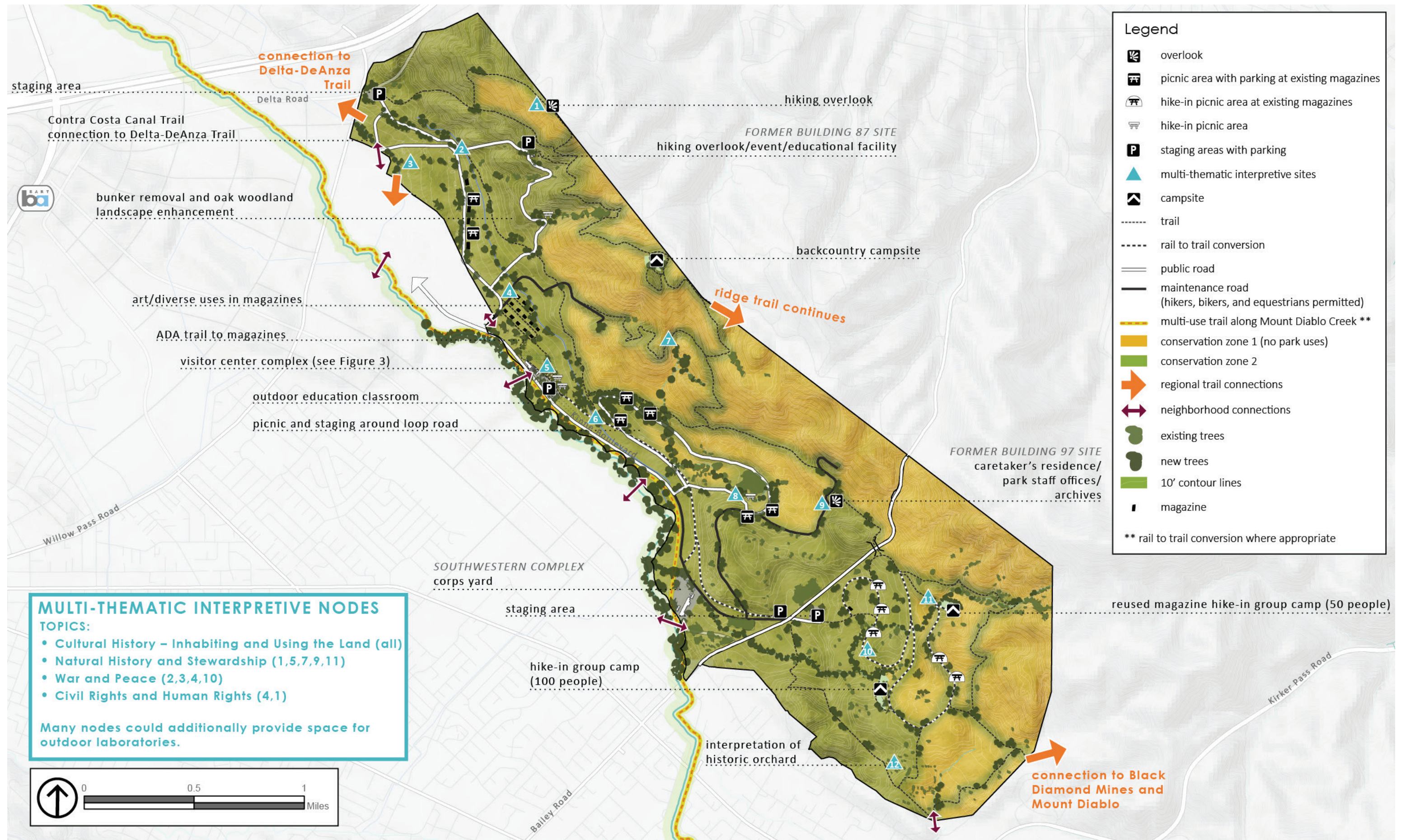


Figure 4. Alternative B Visitor Center Complex

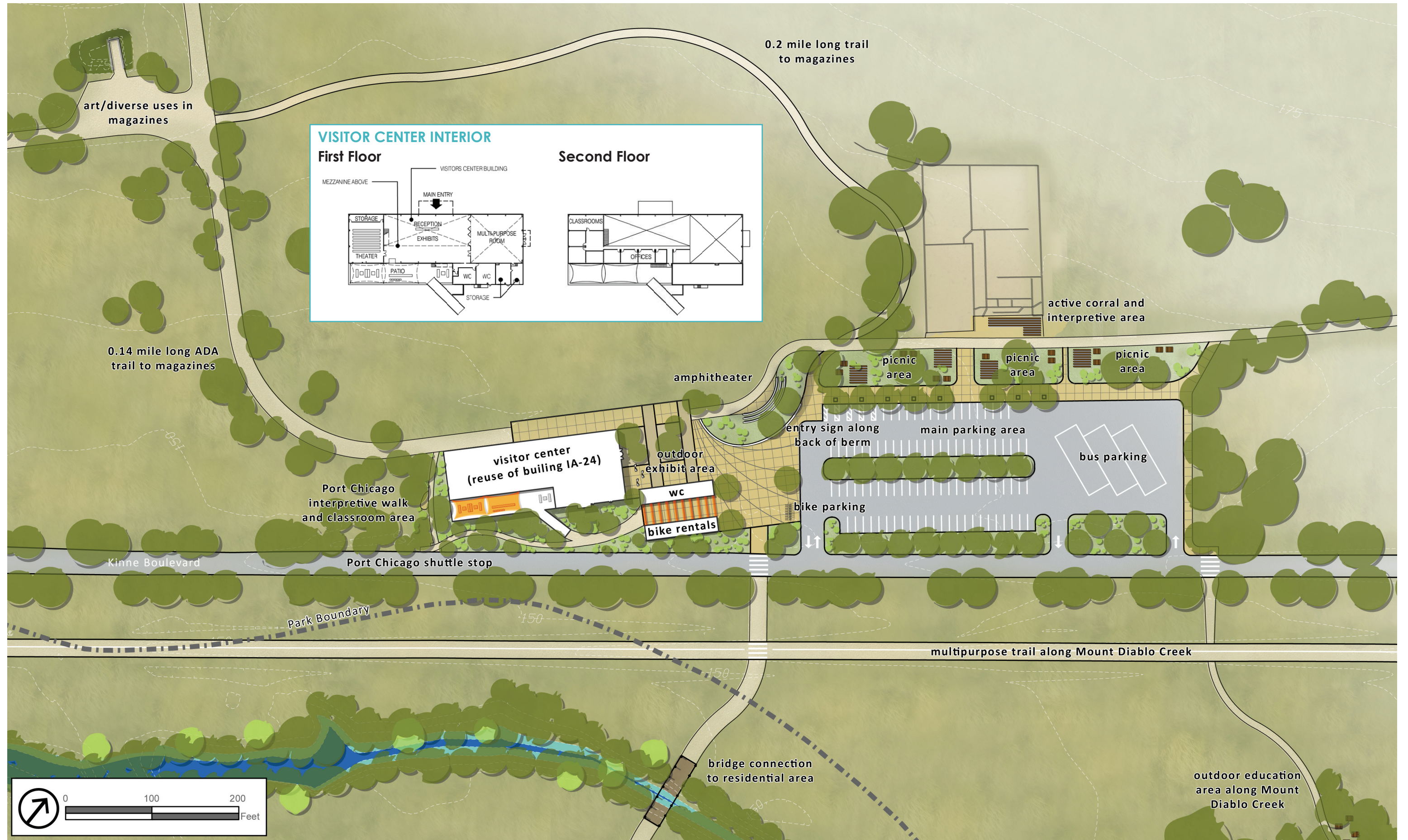
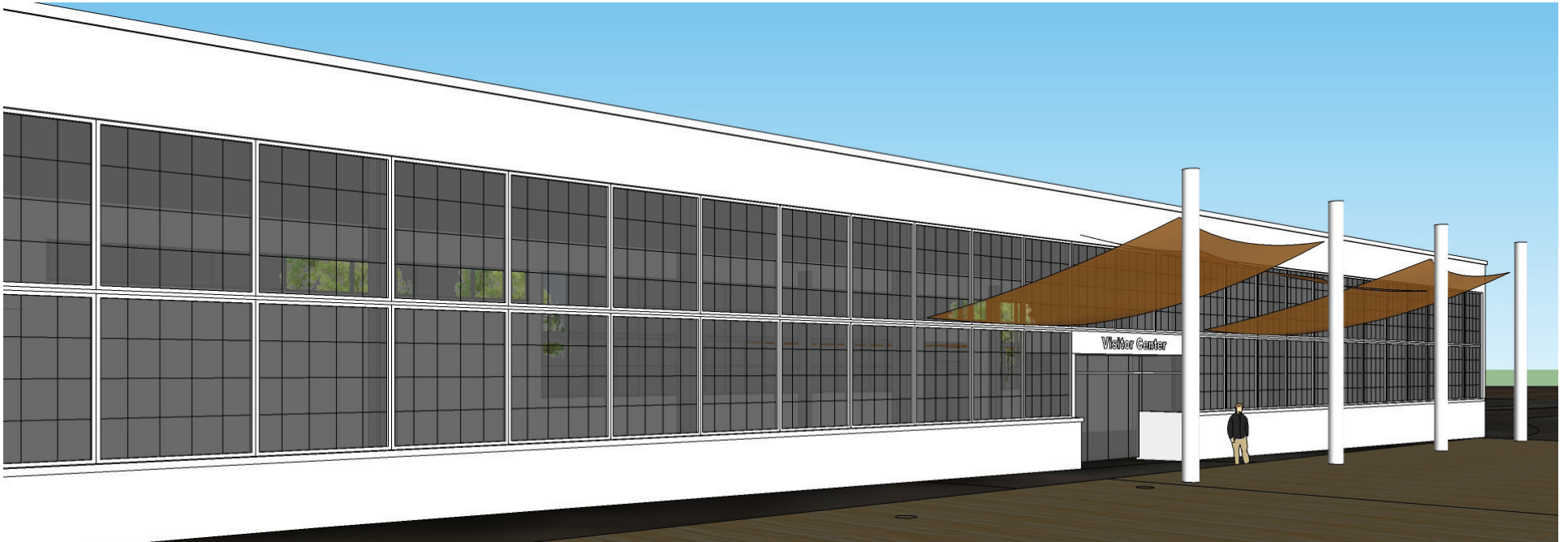


Figure 5. Alternative A & B Visitor Center Building



View of proposed Visitor Center Entry, including staff parking shown in Alternative A.



Visitor Center Entry - East Side (Alternatives A & B).

Figure 6. Precedent Images for Visitor Center Building

Barrel form inspired by structure of magazines; industrial materials; deep shade



Birding Center, Mission Texas, Lake Flato Architects

Earth sheltered form, inspired by magazines



Edgeland House, Austin, TX, by Bercy Chen Studio

Pavilion out of industrial materials, the steel relating back to the structural system at IA-24



South Lake Union Discovery Center, Seattle, WA, Miller Hull Partnership

Interior with space for contemplation



Campus Museum, Austin Texas, by Lake Flato Architects

Interior with views for interpretation



Lands End Visitor Center, GGNRA, EHDD Architects

Deep shade porches and covered walkways



Shangri-la Nature Center, Orange, TX - Lake Flato Architects

Figure 7. Conceptual Reuse of Magazines



Concept depicting magazine reused for seating and informal picnicking. Trees are planted in the historic entry-way restricting public access and highlighting the shape of the historic relic. The pathway follows the historic rail alignment.



Concept depicting magazine repurposed for temporary, rotating art installations.



Concept depicting magazine repurposed to provide shaded areas within the park for picnic and education. The berm around the magazine can be landscaped to highlight seasonal changes at the park.