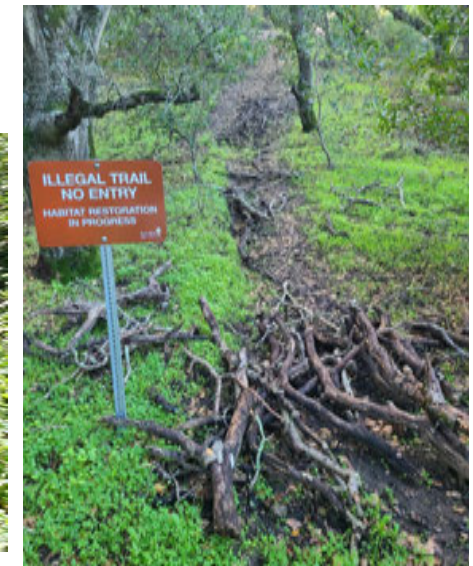
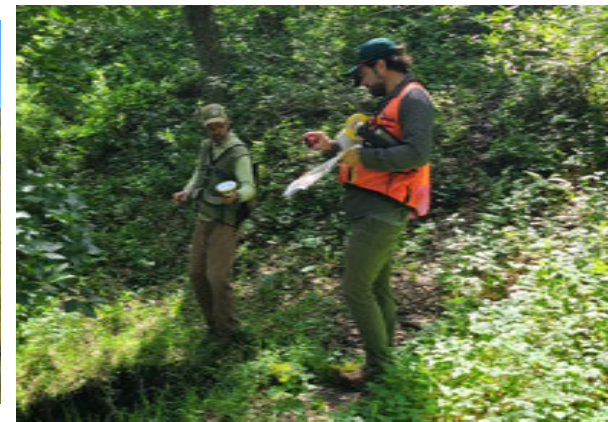


<https://www.ebparks.org/parks/briones/briones-pilot-project>



## Briones Pilot Project

A two-year temporary pilot project to test a variety of trail management strategies that enhance user experience and protect and restore habitat & watersheds within a designated zone in the northeast corner of Briones Regional Park.





# Briones Pilot Project

## Project Goals & Success Criteria

**Goal # 1: Eliminate the Creation of New Illegal Bootleg Trails in the Pilot Zone**

**Goal # 2: Close and Restore Designated Bootleg Trails**

**Goal # 3: Increase Trail Volunteerism to Assist with Restoration and Maintenance**

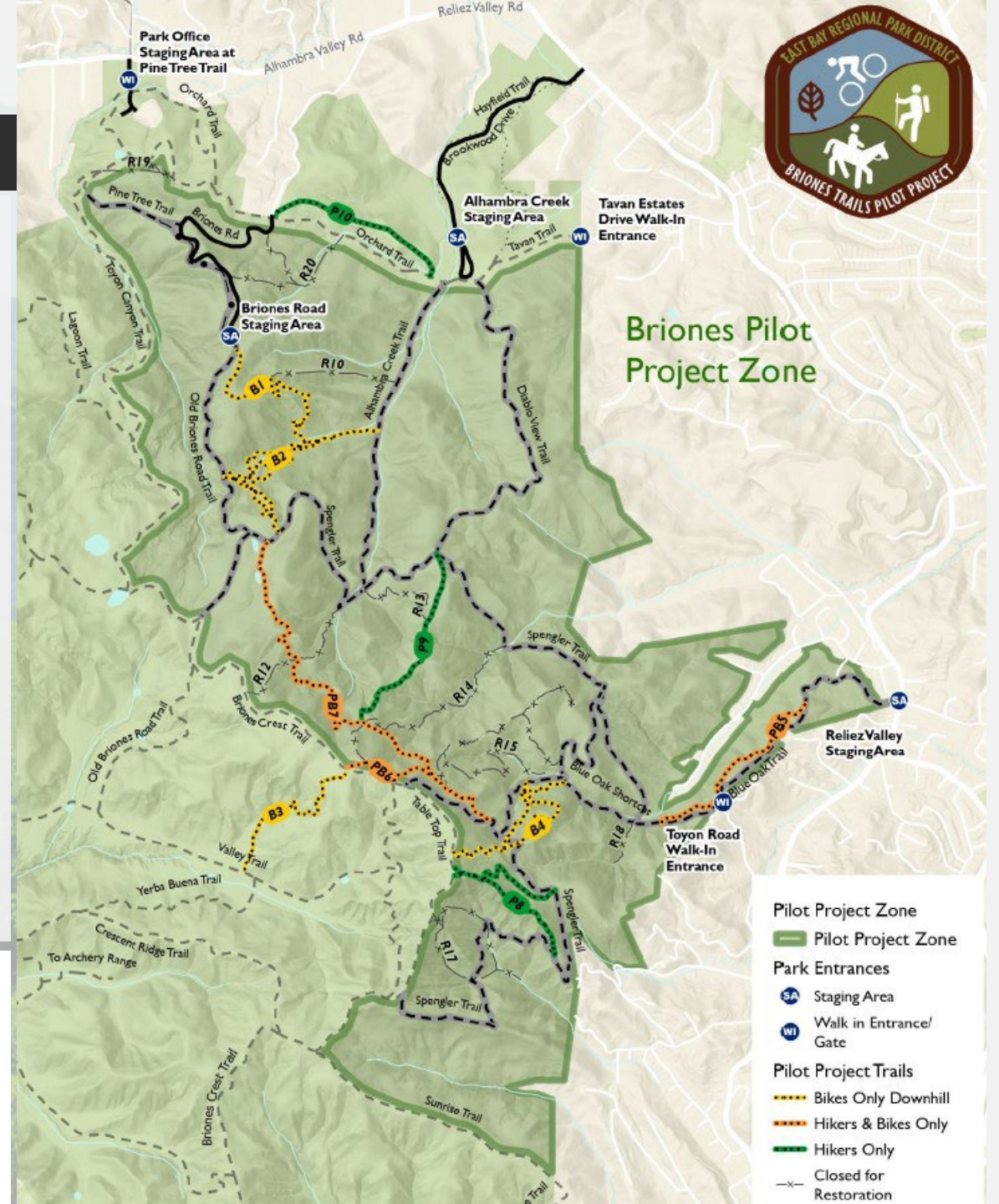
**Goal # 4: Compliance with Management Strategies and Pilot Project Rules**

**Goal # 5: Collect Qualitative Data in Relation to Management Objectives**

**Goal # 6: Obtain Trail Use Data**

## RECOMMENDED BOARD ACTION - 12-17-24

➤ **Amend Attachment A of Ordinance 38 to include trail designations and rules on 5.75 miles of trails within Briones Regional Park**







# #1 Eliminate the Creation of New Bootleg Trails in the Pilot Zone

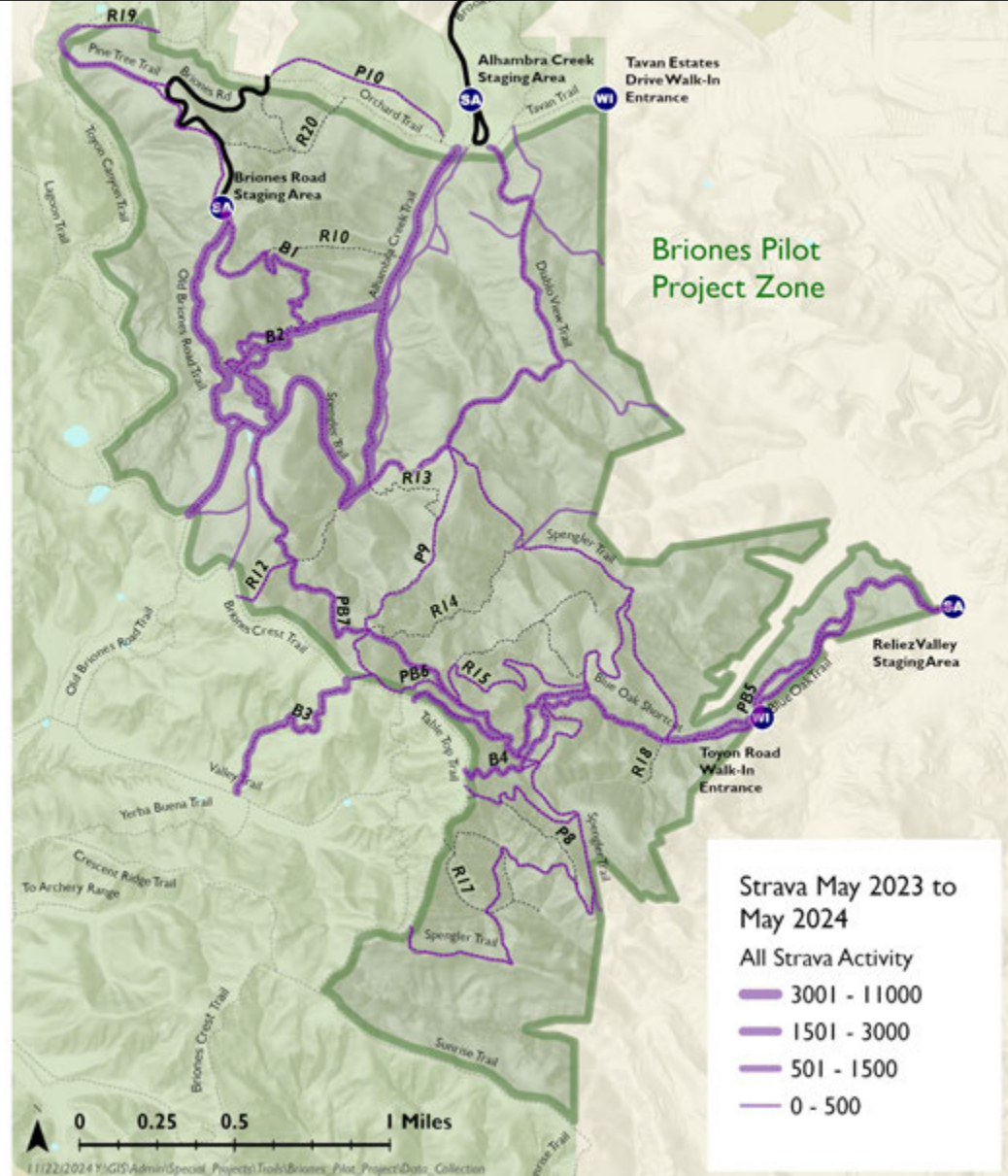
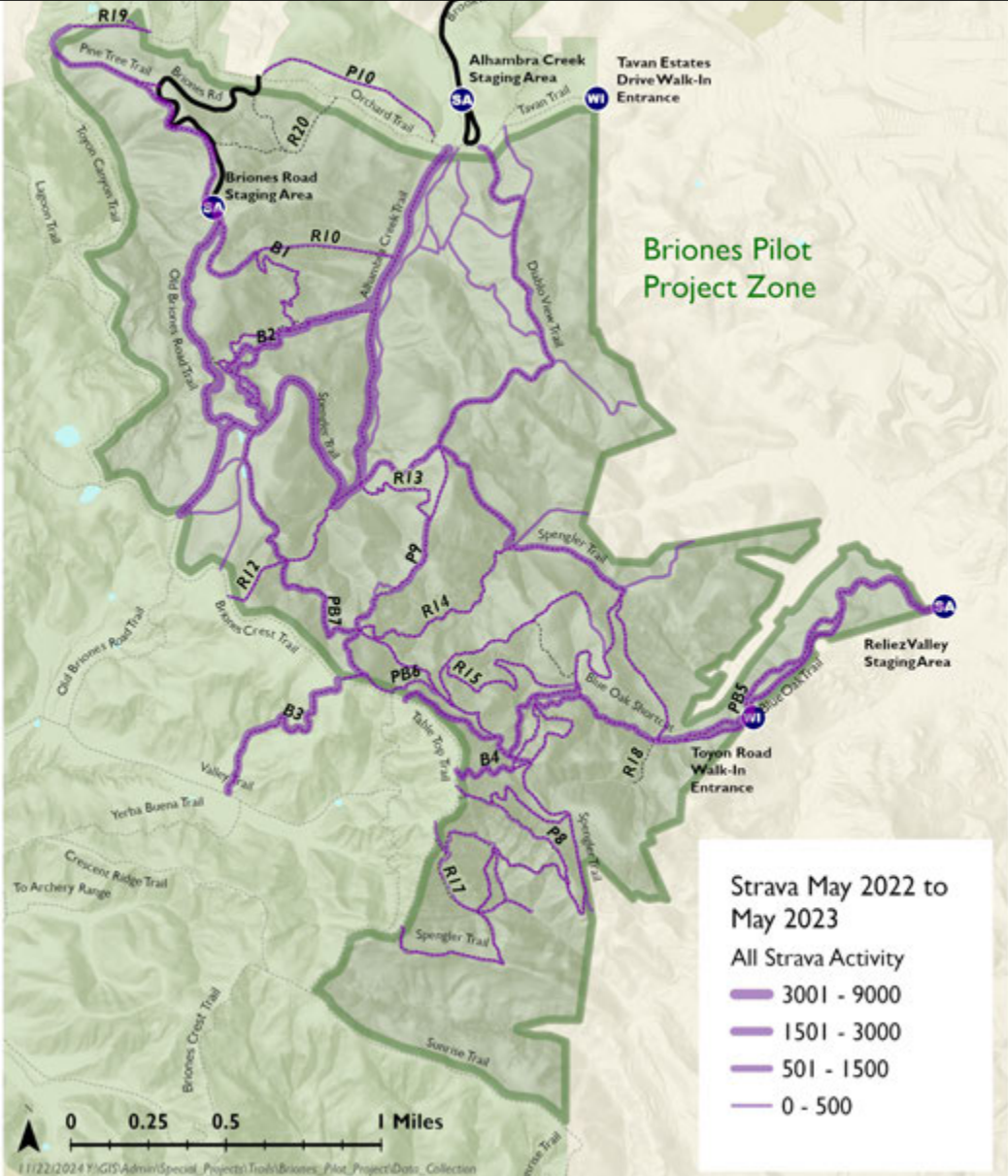
## Success Criteria

- This goal will be considered successful if zero new bootleg trails are established in the pilot zone during the term of the project.



# Trail Use in Pilot Zone 2022-2023 (Before Pilot)

# Trail Use in Pilot Zone 2023-2024 (During Pilot)

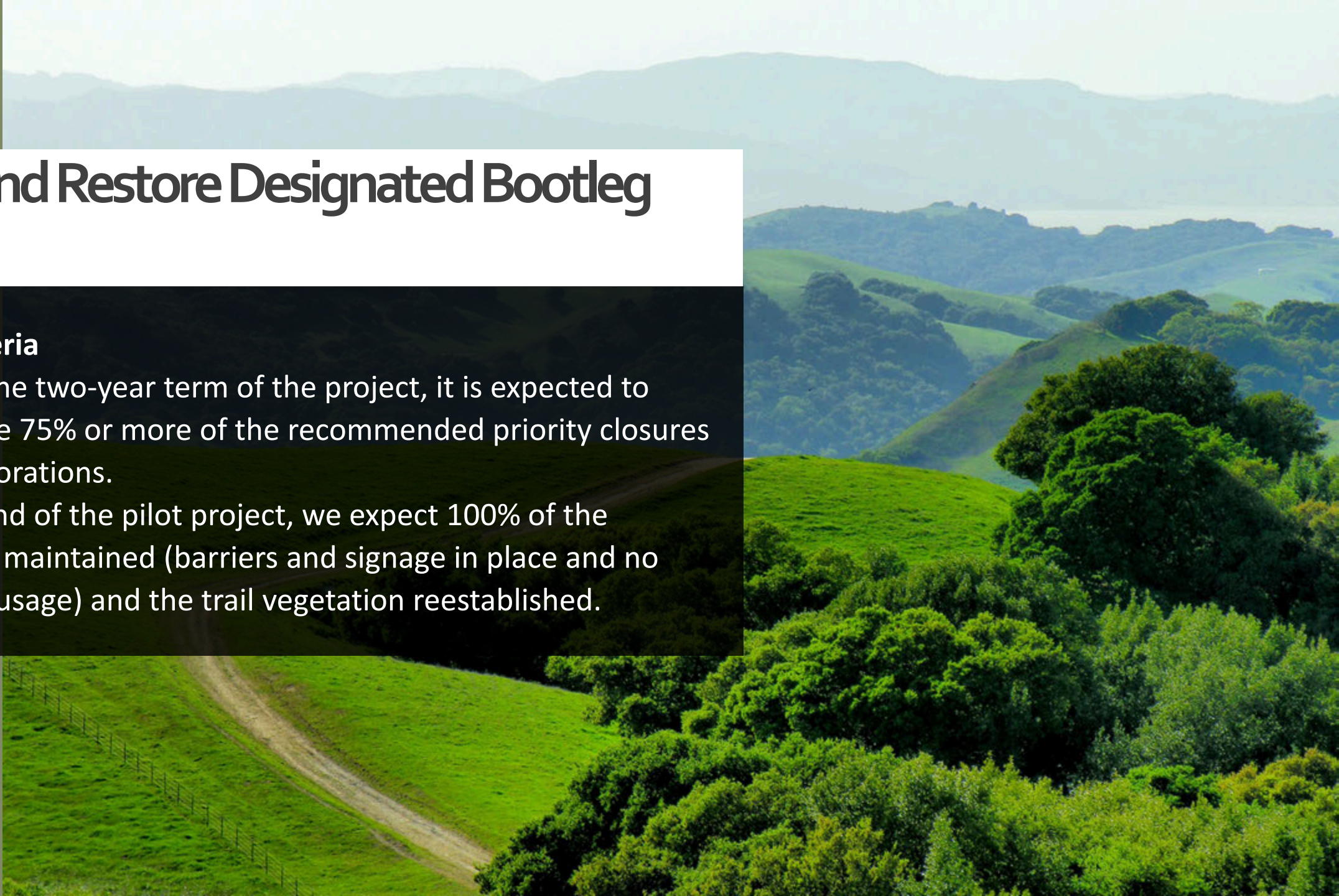




## #2 Close and Restore Designated Bootleg Trails

- **Success Criteria**

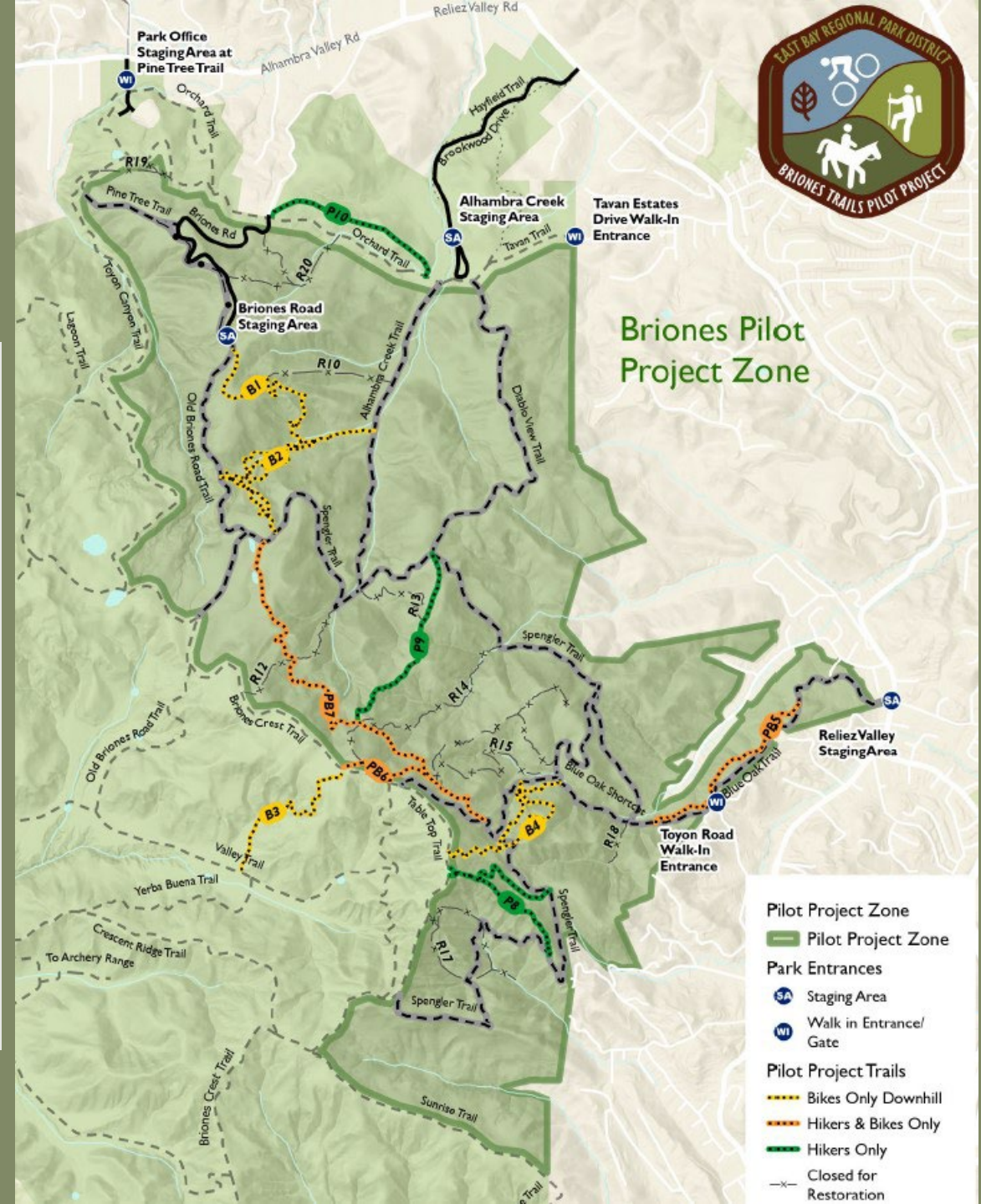
- During the two-year term of the project, it is expected to complete 75% or more of the recommended priority closures and restorations.
- At the end of the pilot project, we expect 100% of the closures maintained (barriers and signage in place and no signs of usage) and the trail vegetation reestablished.





# Trail Closures and Restoration Priorities

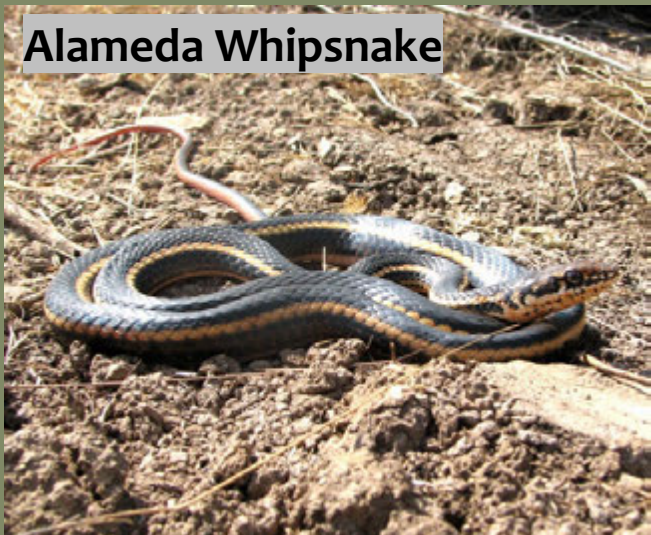
- Does trail segment traverse high quality habitat for federally and/or state listed wildlife species, such as Alameda whipsnake?
- Is trail segment within line of sight of known golden eagle nest?
- Does trail segment cross streams and or occur within stream corridor?
- Is there observable erosion occurring along trail segment?
- Does trail segment traverse CDFW sensitive plant community?
- Is trail established or actively being constructed?



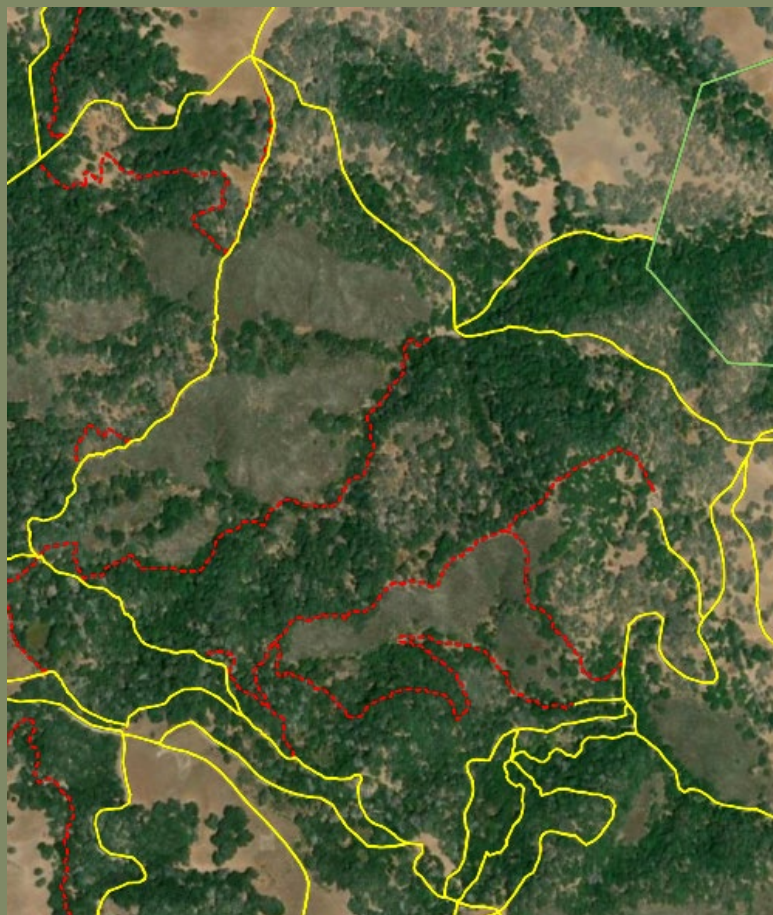


# Biological Resource Concerns

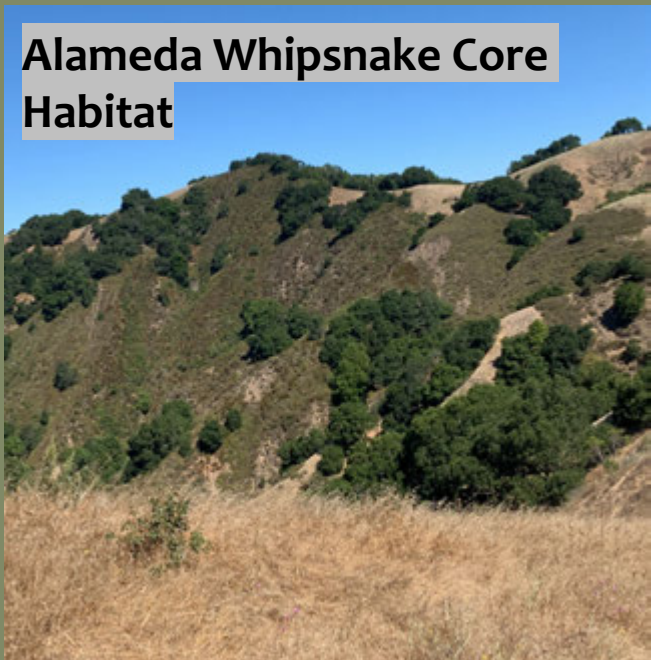
Alameda Whipsnake



Habitat Fragmentation



Alameda Whipsnake Core Habitat



Erosion/Stream Damage



Golden Eagle



California Red-legged Frog

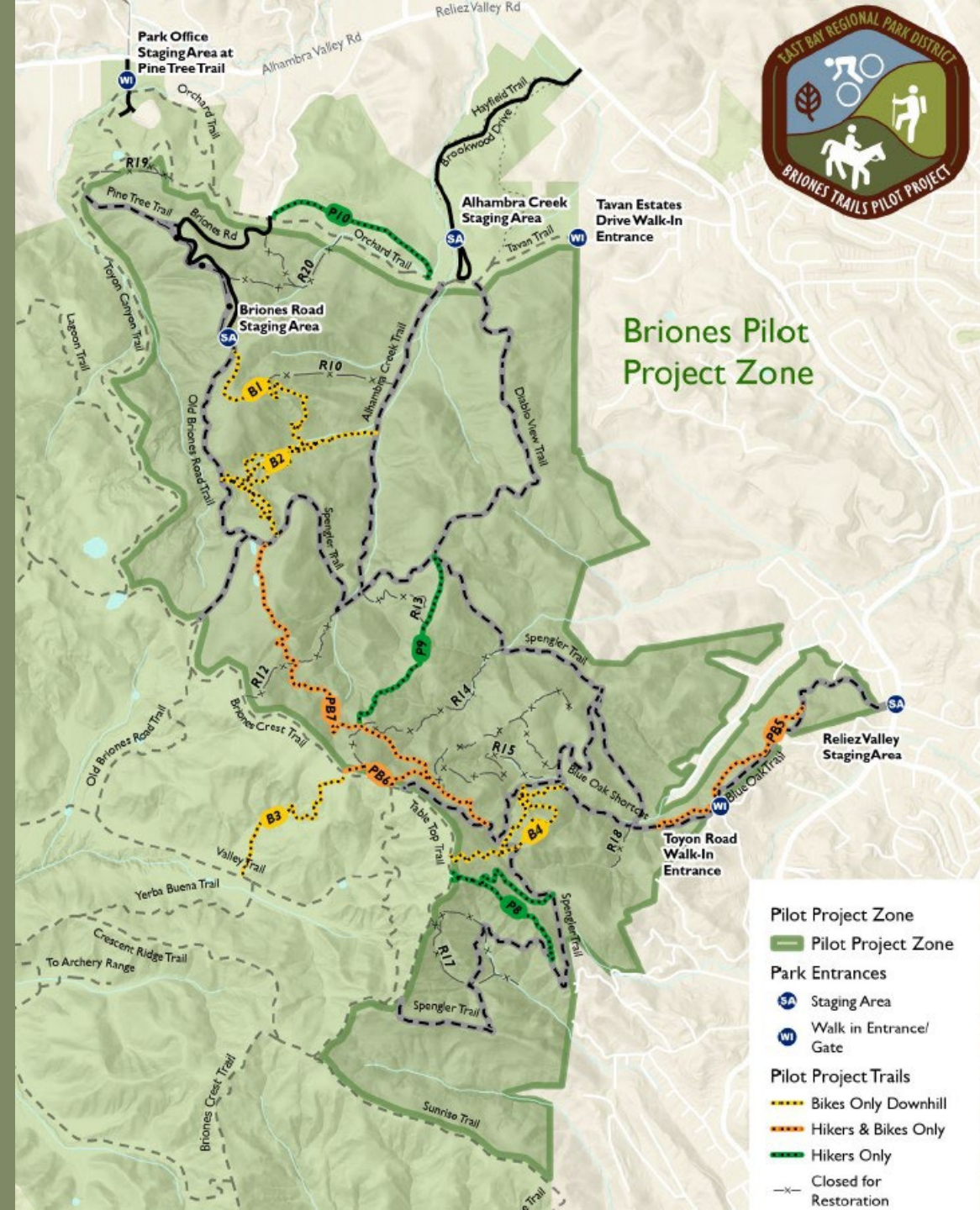




# Trail Plan that Works and Protects Sensitive Biological Resources



## Briones Pilot Project Zone



- Pilot Project Zone
- Park Entrances
- Staging Area
- Walk in Entrance/ Gate
- Pilot Project Trails
- Bikes Only Downhill
- Hikers & Bikes Only
- Hikers Only
- Closed for Restoration

- All bootleg trails within/adjacent to AWS core habitat either closed/restored or hiker only
- Trails with most stream crossings and erosion closed/restored
- Trail within stream bed closed and to be restored
- Trail within line-of-sight of golden eagle nest closed/restored
- Reduced habitat fragmentation
- A network of bootleg trails “opened” that provides various routes through the Pilot Zone including terrain/trails valued by mountain bike community
- Scenic Hiker only trails



# Trail Closure / Restoration:

R10	Close & Restore	0.36
R12	Close & Restore	0.42
R13	Close & Restore	0.36
R14	Close & Restore	0.78
R15	Close & Restore	1.36
R17	Close & Restore	0.72
R18	Close & Restore	0.14
R19	Close & Restore	0.26
R20	Close & Restore	0.59

**Close & Restore**

**4.99**

## Briones Pilot Project Restoration Log

Trail	Work Completed	Crew	Date of Restoration	Assessments
R10	Both entrance and exit de-compacted and covered with slash from trail merge back past lien of sight from trail	CCC	May-23	7.18.23: No signs of human use.
				11.12.24: No signs of human use.
R12	Decompacted tread, topped with jute netting and native debris.	Dig Days	Aug-23	7.18.23: No signs of human use.
				11.12.24: no signs of human use.
R13	Tread decompacted and covered with tree limbs and other brush.	SCA	Jul-23	8.22.23: No signs of human activity.
				11.12.24: No signs of human activity
R14	Exit of trail required extensive jute netting, check dams, and recontouring of side slope above where the trail crossed Grayson Creek. Top of trail was de-compacted, obscured and recontoured	CCC	May-23	8.22.23: Restoration holding. A few foot tracks noted.
				11.13.24: No signs of human activity.
R15	Entrance and two least popular exits of the complex were de-compacted, covered with slash and obscured. "Dookie" alignment signed and blocked with branches.	CCC	May-23	7.18.23: No signs of human use.
				11.12.24: Tracks noting limited use by hikers and cyclists observed.
R17	Crew recontouring the side slope where possible and covering the de-compacted tread with jute netting and slash	SCA	Jul-23	8.22.23: No signs of human use.
				11.12.24: No signs of human activity.
R18	Trail decompacted and obscured with vegetation.	SCA	Jul-23	7.18.23: No signs of human use.
				11.12.24: no signs of human activity.
R19	Signed closed, beginning tread obscured with branches.	Park Staff	Apr-23	7.18.23: Debris moved, sign damaged.
				11.12.24: No signs of human use.
R20	Tread was decompacted and obscured with tree limbs and brush.	CCC	May-23	7.18.23: No signs of human use. Some cattle activity noted.
				11.12.24: No signs of human activity.
P9	Incised reroute had 12 check dams installed, top and bottom tread decompacted and obscured with brush. Alternate sustainable route established.	CCC	Aug-24	8.22.23: Two bike tracks noted.
				11.12.24: closed segments debris moved off trail with some foot prints noted in dirt. Additional signage needed.



**R12 Before**



**R12 After**





**RI3 Before**



**RI3 After**





R10



R14





RI4



RI2



R20

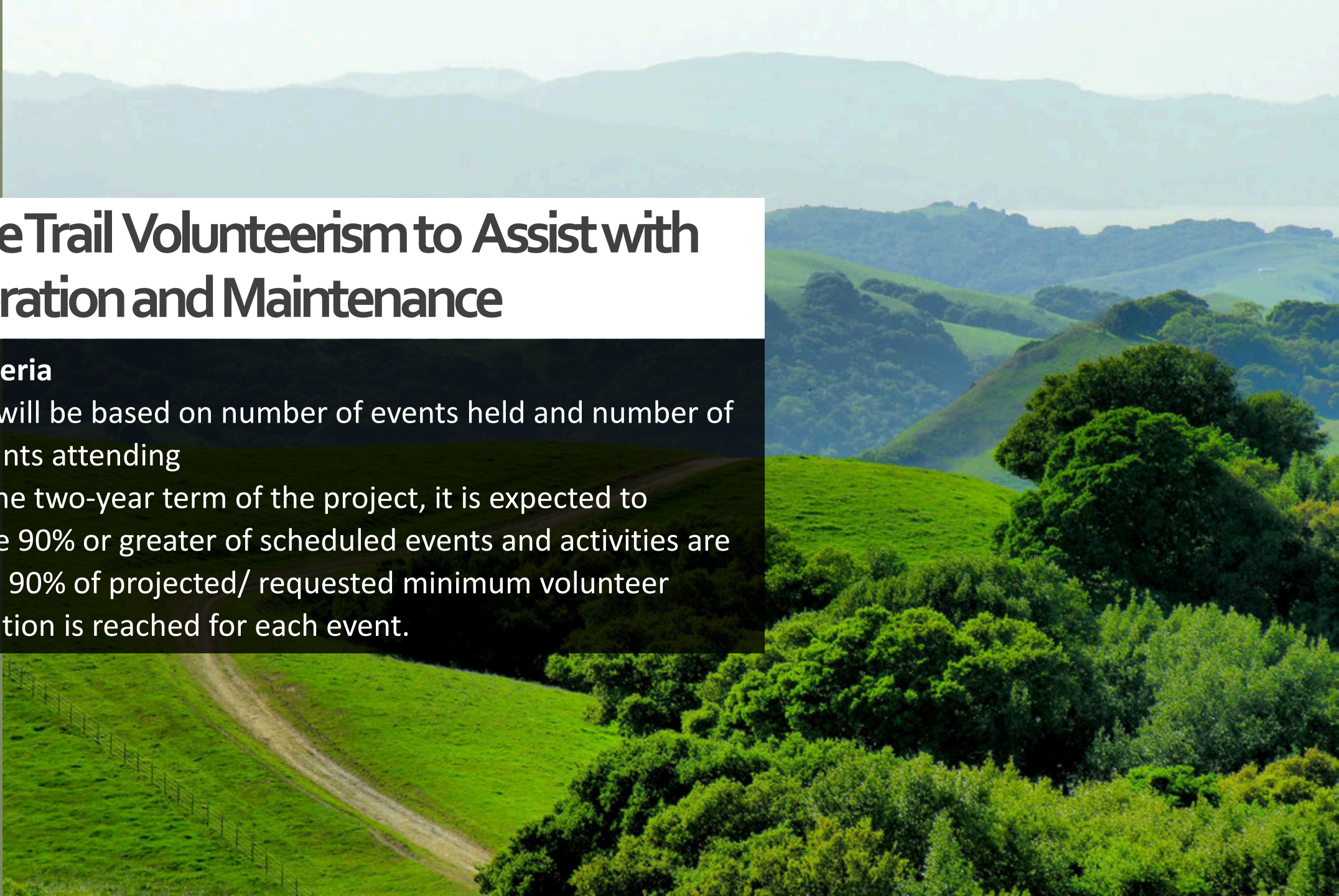




## #3 Increase Trail Volunteerism to Assist with Trail Restoration and Maintenance

### Success Criteria

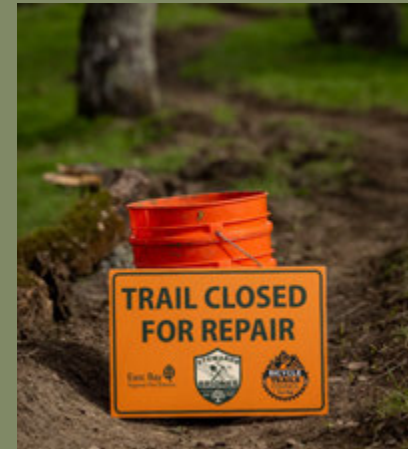
- Success will be based on number of events held and number of participants attending
- During the two-year term of the project, it is expected to complete 90% or greater of scheduled events and activities are held and 90% of projected/ requested minimum volunteer participation is reached for each event.







Briones Pilot Dig Day Totals:			
Years	Events	Volunteers	Hours
2023	6 Community Dig Days:	140	882
	5 SOB Dig Days:	48	376
2024	5 Community Dig Days:	154	820
	7 SOB Dig Days:	47	378
<b>Total</b>	<b>23 Events</b>	<b>389</b>	<b>2456</b>







## #4 Compliance with Management Strategies and Pilot Project Rules

### Success Criteria

- During the two-year term of the project, it is expected to have a compliance rate of at least 80% of total usership.



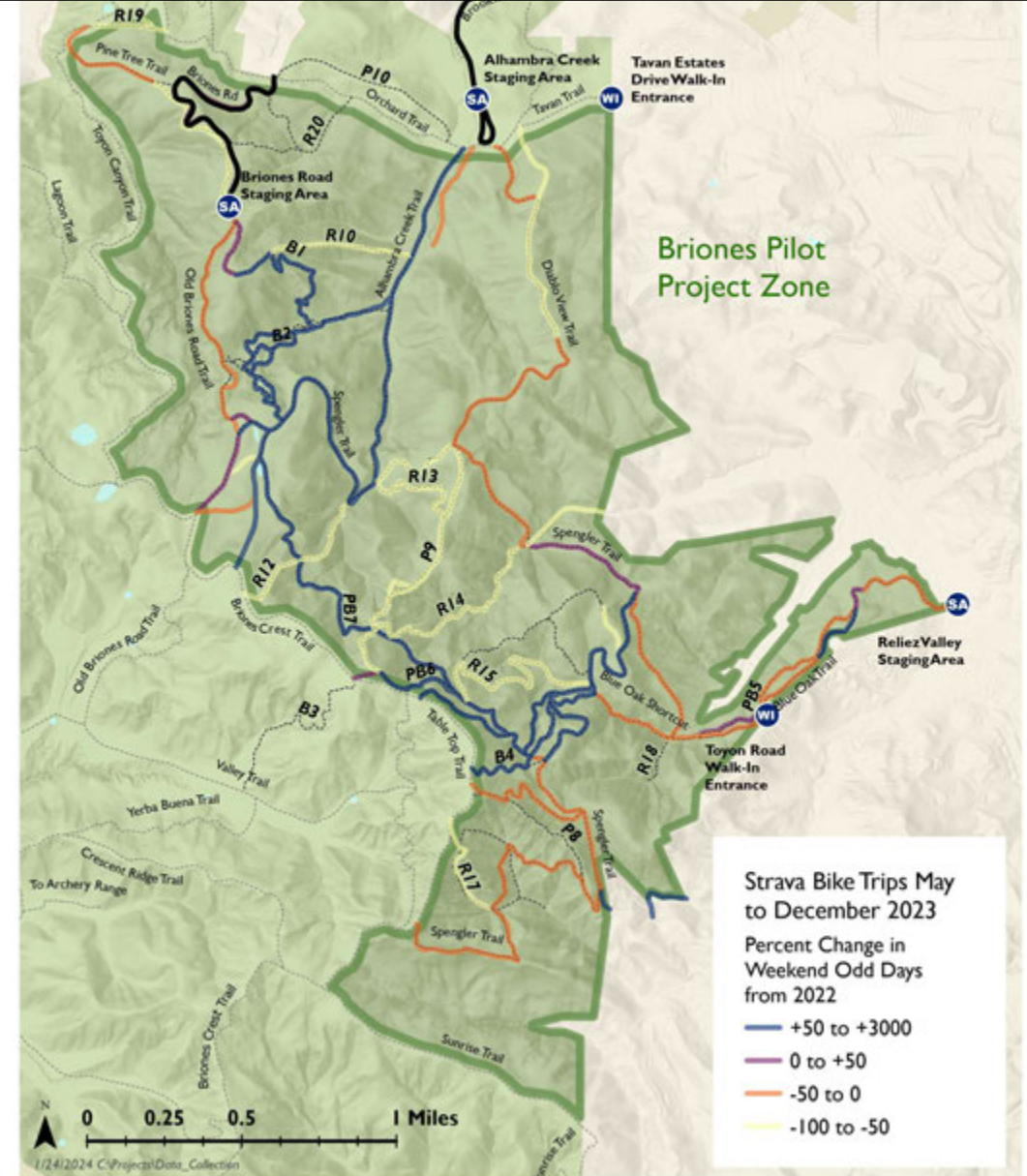
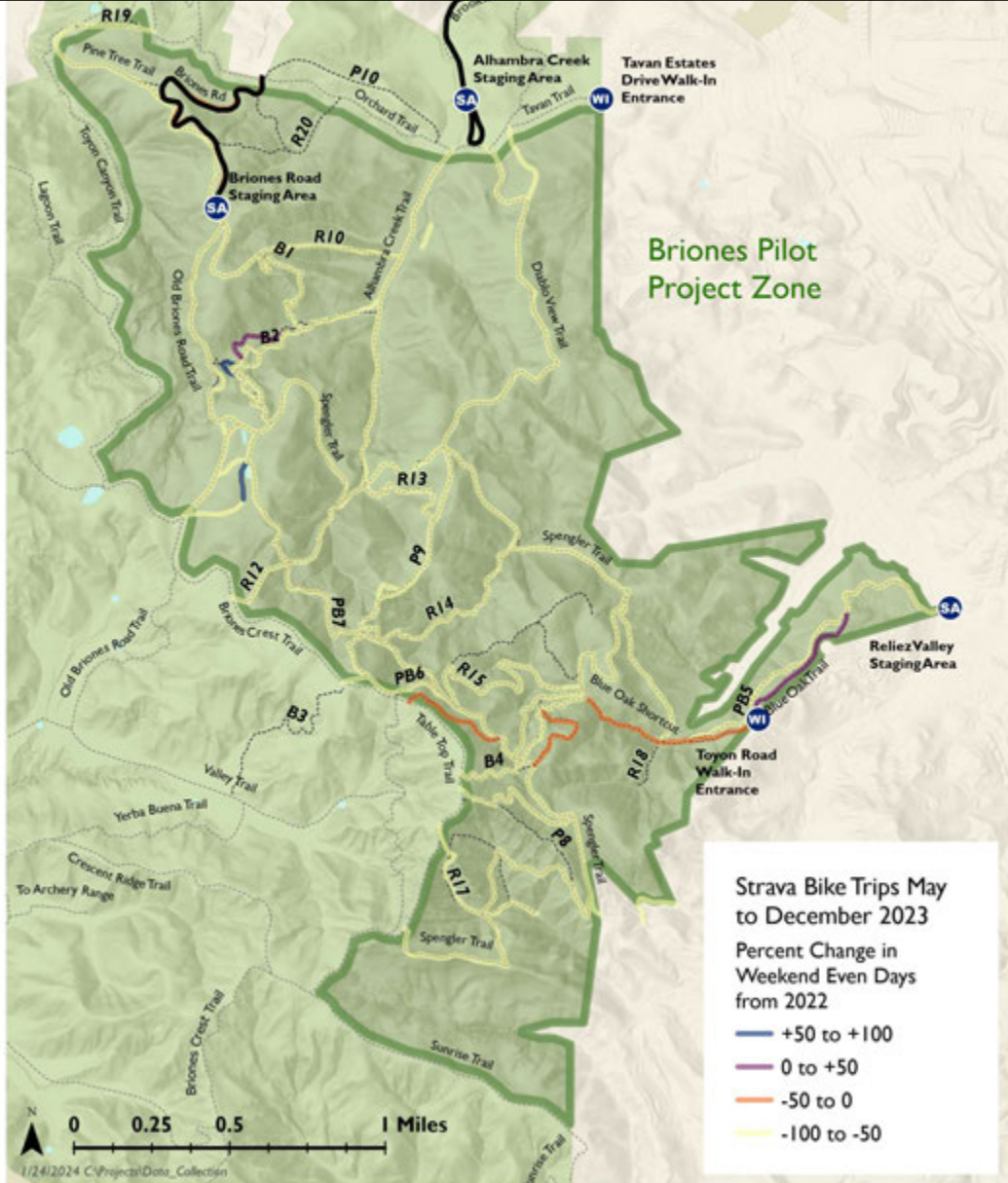
**Briones Pilot Project Trail Counts and Compliance - November 1, 2024**

Location	Weekly Average Counts				Alternative Day Compliance			Dates	Source
	Total	Hikers	Bikers	Equestrian	Hiker	Biker	Equestrian		
<b>Briones Pilot Project</b>	4,515	3,703	734	78	-	81%	79%	7/17/23 - 8/20/24	Eco-Counter
<b>Alhambra Creek</b>	2,999	2,436	496	67	-	81%	79%	7/17/23 - 8/20/24	Eco-Counter
<b>Old Briones</b>	725	511	203	11	-	75%	82%	7/17/23 - 8/20/24	Eco-Counter
<b>Reliez</b>	791	756	35	0	-	31%	100%	7/17/23 - 8/20/24	Eco-Counter
<b>B1</b>	101	-	-	-	94%	70%	100%	7/17/23-7/17/24	Trafx
<b>B2</b>	245	21	224	-	94%	87%	100%	7/17/23-7/17/24	Camera/Trafx/Bike
<b>B3</b>	173	-	-	-	97%	62%	100%	7/17/23-7/17/24	Trafx
<b>B4</b>	162	-	-	-	98%	82%	100%	7/17/23-7/17/24	Trafx
<b>PB5</b>	182	-	-	-	-	91%	100%	7/17/23-7/17/24	Trafx
<b>PB6</b>	48	-	-	-	-	82%	100%	7/17/23-7/17/24	Trafx
<b>PB7</b>	167	88	79	-	-	80%	79%	7/17/23-7/17/24	Camera/Trafx/Bike
<b>P8</b>	24	-	-	-	-	100%	-	7/17/23-7/17/24	Trafx
<b>P9</b>	52	49	4	-	-	94%	-	7/17/23-1/1/25	Camera/Trafx
<b>P10</b>	31	-	-	-	-	99%	-	7/17/23-1/1/26	Trafx
<b>ACHT</b>	683	680	3	-	-	99%	-	9/4/23 - 12/4/23	Camera/Trafx
<b>R11</b>	0	-	-	-	100%	100%	-	7/17/23 - 1/17/24	Camera
<b>R12</b>	0.5	-	-	-	99%	99%	-	7/17/23 - 1/17/24	Camera
<b>R13</b>	0	-	-	-	100%	100%	-	7/17/23 - 1/17/24	Camera
<b>R14</b>	0	-	-	-	100%	100%	-	7/17/23 - 1/17/24	Camera
<b>R15</b>	5.6	1.6	4	-	99%	99%	-	7/17/23 - 1/17/24	Camera/Bike
<b>R16</b>	0	-	-	-	100%	100%	-	7/17/23 - 1/17/24	Camera
<b>R17</b>	0	-	-	-	100%	100%	-	7/17/23 - 1/17/24	Camera
<b>R19</b>	3.6	3.1	0.5	-	99%	99%	-	7/17/23 - 1/17/24	Camera
<b>R20</b>	0	-	-	-	100%	100%	-	7/17/23 - 1/17/24	Camera
<b>Bay Trail - Albany</b>	5,085	1,754	3,331	-	-	-	-	1/18/21-5/17/22	Eco-Counter
<b>IHT - Treat Boulevard</b>	9,579	7,025	2,554	-	-	-	-	7/17/23 - 1/17/24	Eco-Counter
<b>Tilden Nature Area</b>	1,519	-	-	-	-	-	-	7/17/23 - 1/17/24	Placer AI
<b>Skyline Gate - Redwood</b>	4,811	-	-	-	-	-	-	7/17/23 - 1/17/24	Placer AI



# Bike Trips on HORSE/HIKER Only Days (Percent Change)

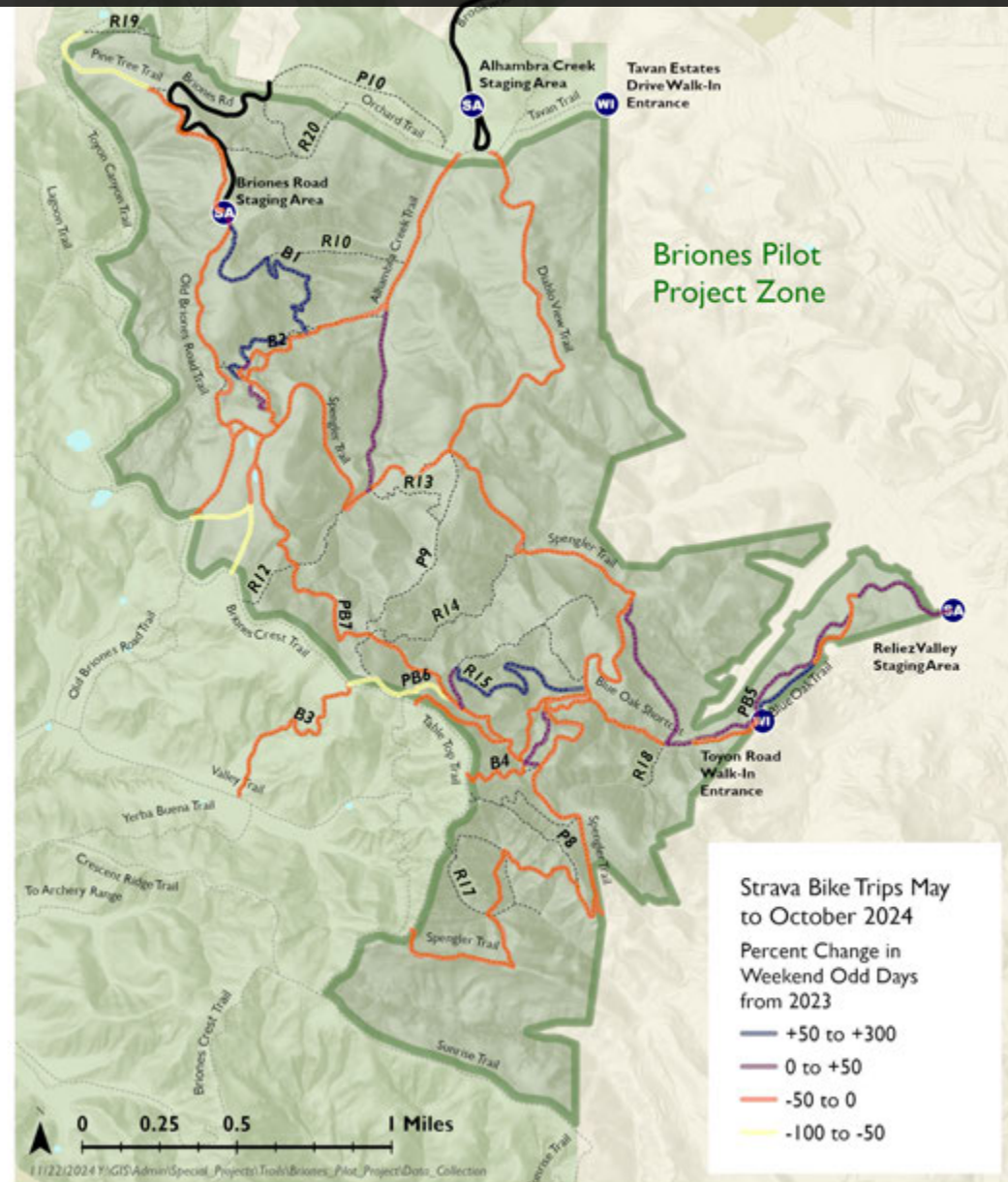
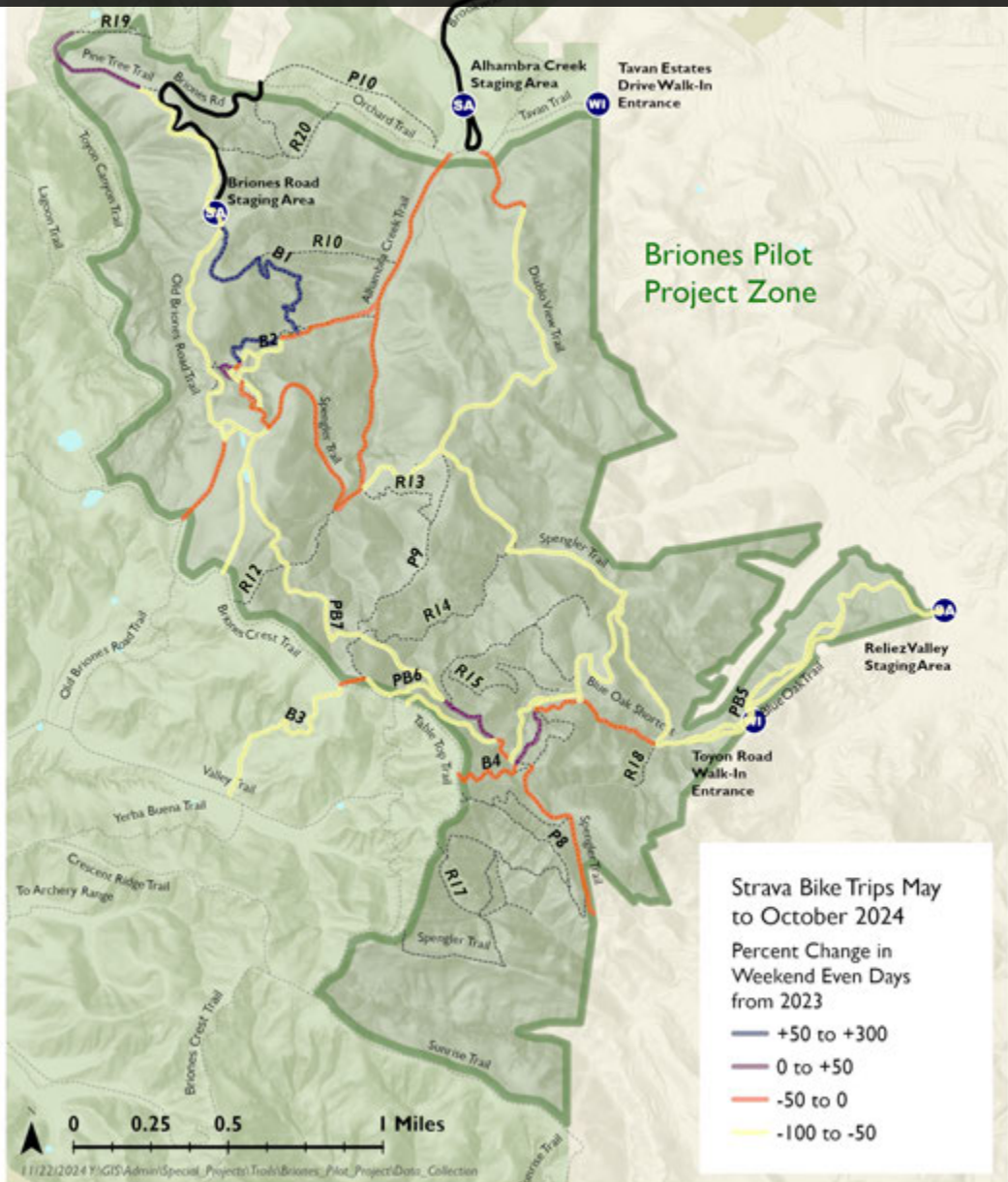
# Bike Trips on BIKE Only Days (Percent Change)





# Bike Use on HORSE/HIKER Only Days (Percent Change) 2024

# Bike Use on BIKE Only Days (Percent Change) 2024

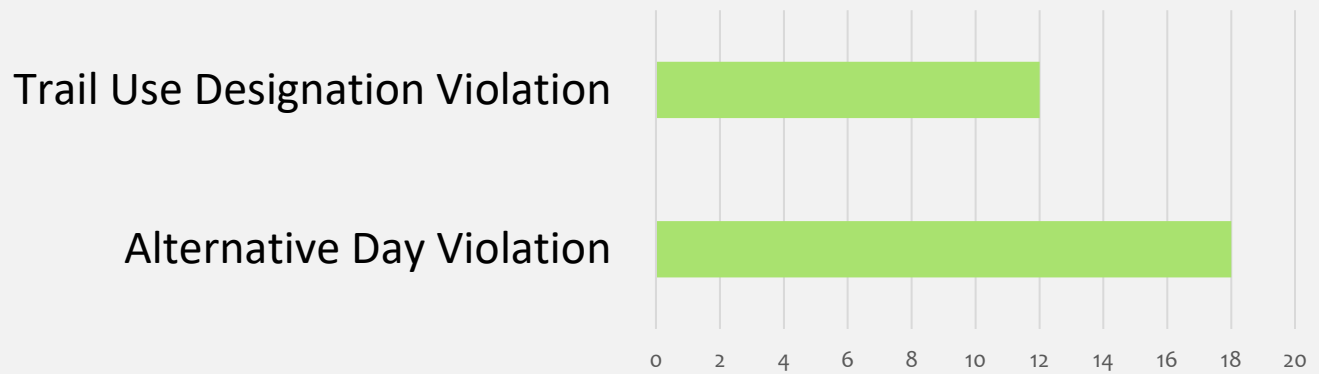




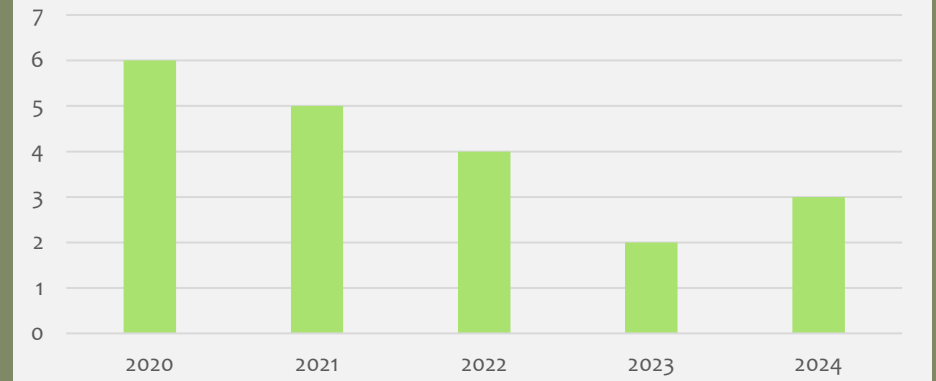
# Public Safety: Education & Enforcement

Park	Total Hours	Incidents	Total Citations Issued	Bike Citations	Date
Briones	363	94	99	30	4/1/23-11/1/24

Pilot Project *Bike* Citation Breakdown  
(April '23 - November '24)



Briones Bicycle Accidents Reported  
by Public Safety



Comparative Citations Issued in other parks  
4/1/23-11/1/24:

- Pleasanton Ridge – 13
- IHT – 25
- Redwood – 155
- Temescal – 141
- Tilden - 273
- MLK – 316
- Miller Knox - 245

## Volunteer Trail Safety Patrol

166.5 total hours

144 hours at the Education Booths/Tables and  
22.5 hours hiking the BPP area





## #5 Collect Qualitative Data in Relation to Management Objectives

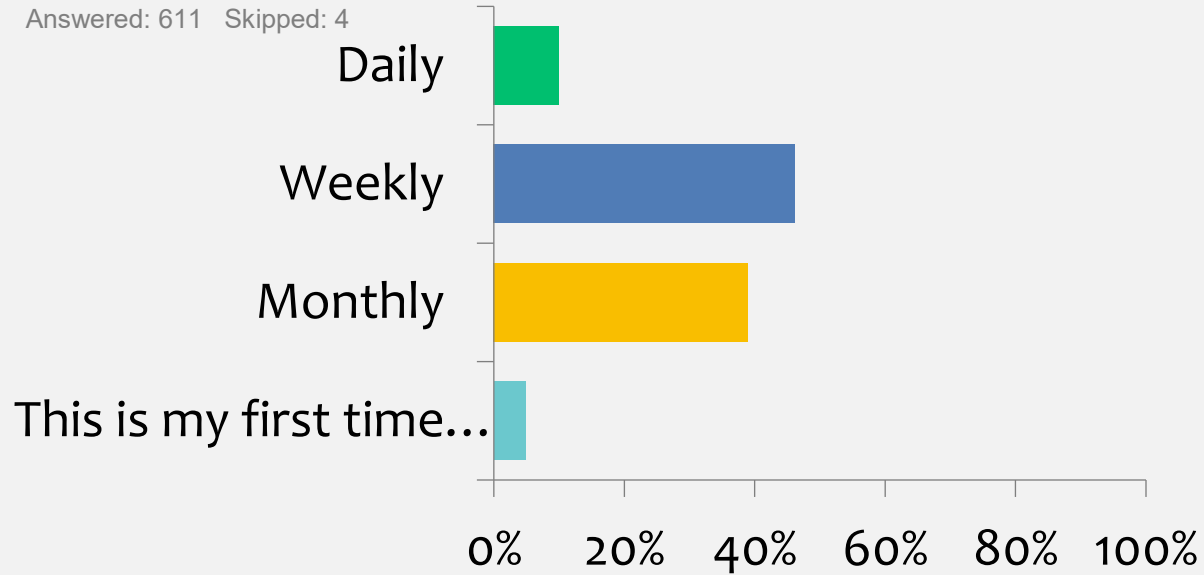
### Success Criteria

- At the end of the project an overall positive response rate of 75% or greater will indicate a positive outcome.
- Feedback regarding strategies will also be collected and a positive rate of 60% or greater will be considered successful.



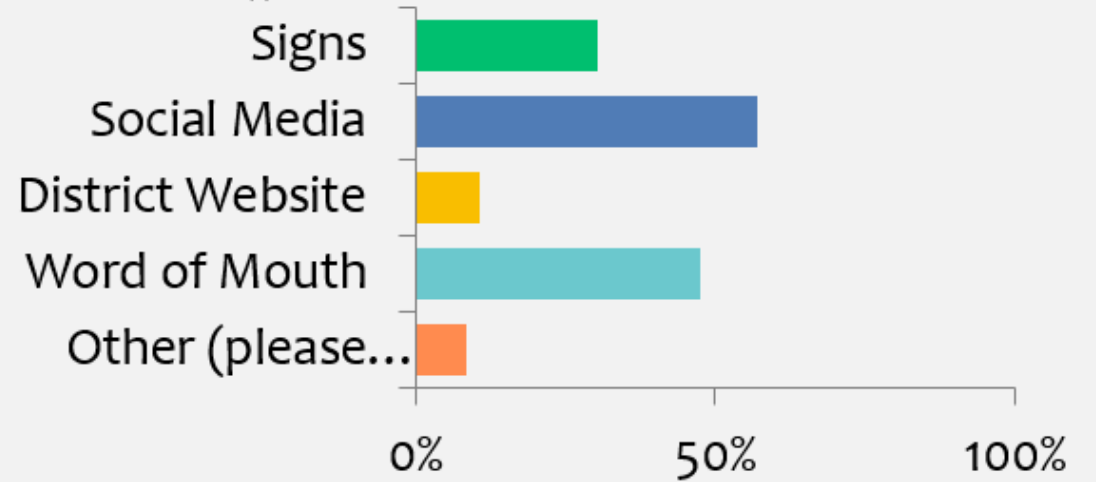
## How often do you visit Briones Regional Park?

Answered: 611 Skipped: 4



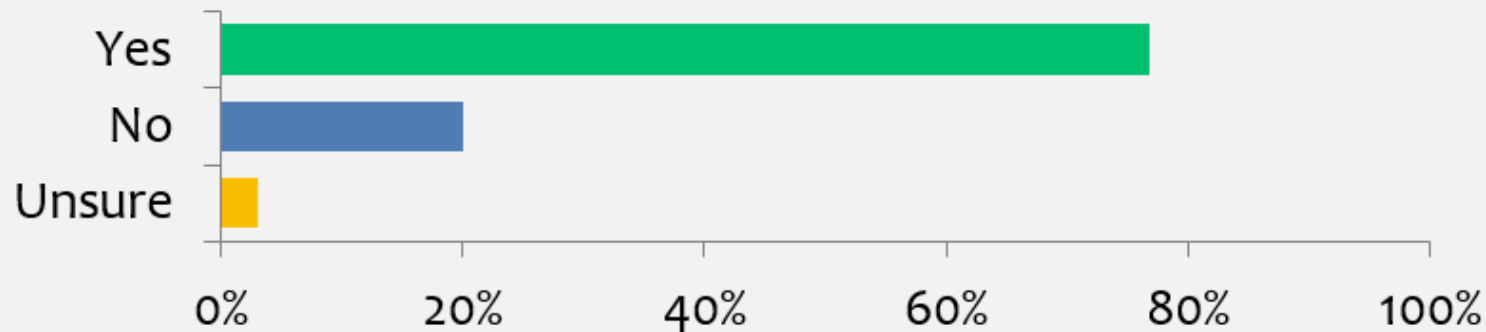
## How did you hear about the Pilot Project?

Answered: 479 Skipped: 136



## Has the Park District struck a balance between providing a quality recreational experience and protecting habitat and natural resources?

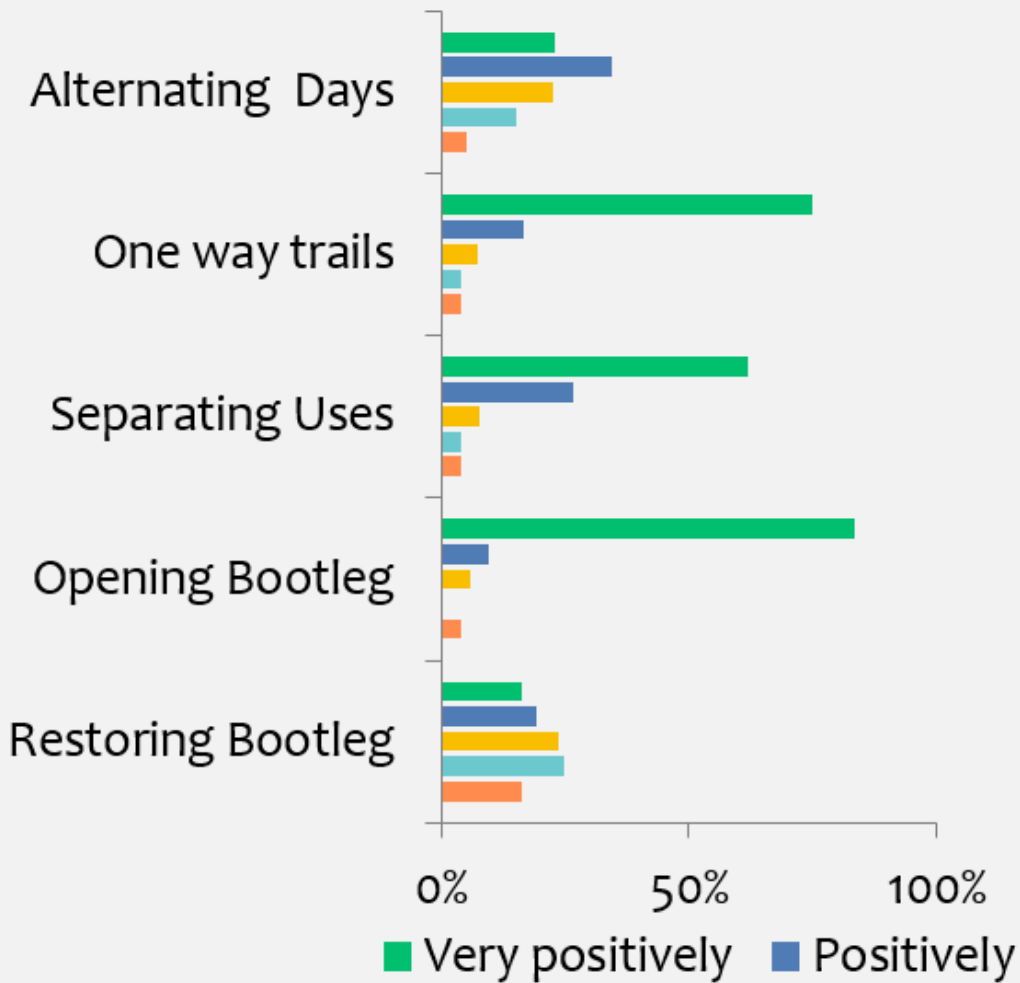
Answered: 517 Skipped: 164





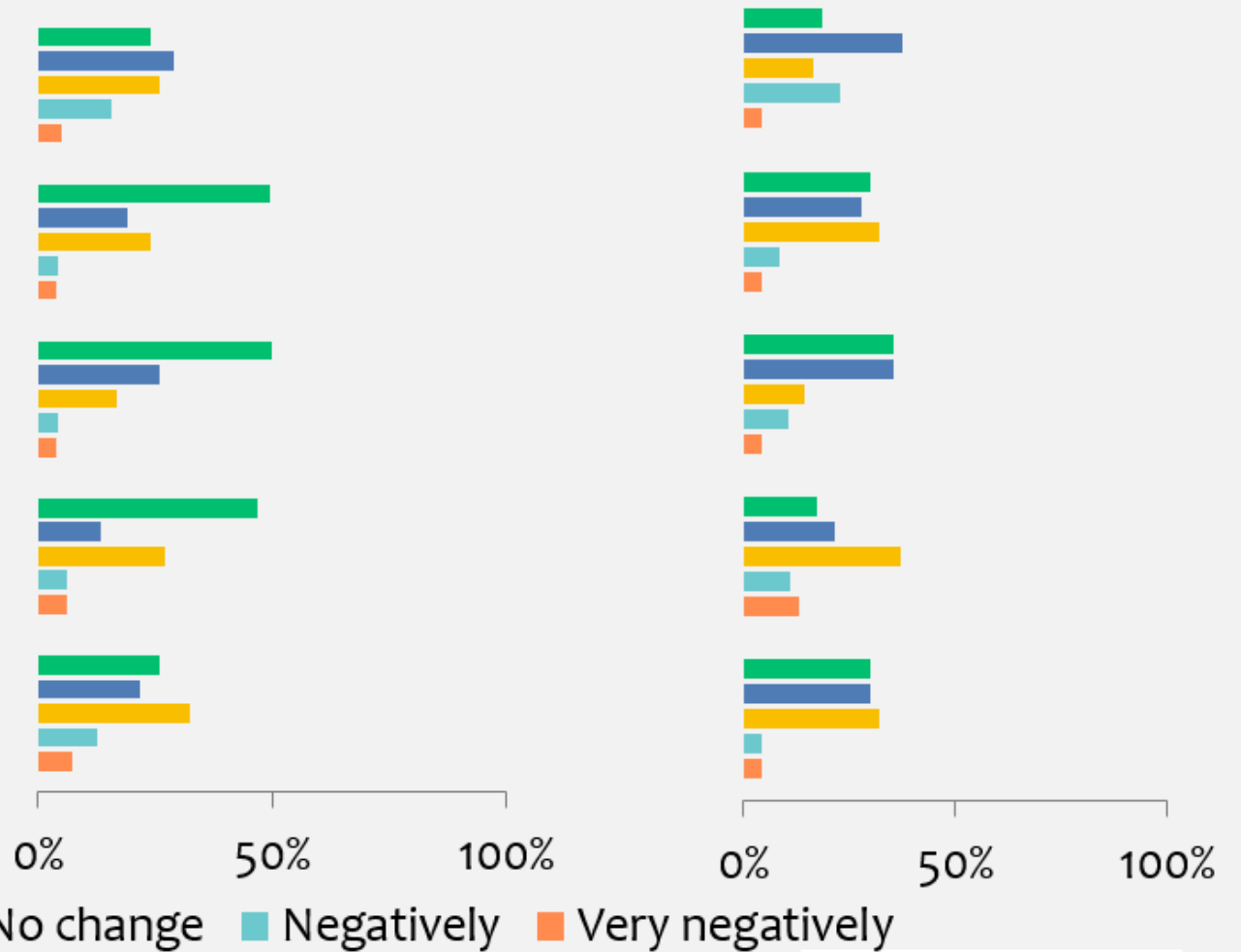
## Bikers

Answered: 393 Skipped: 86



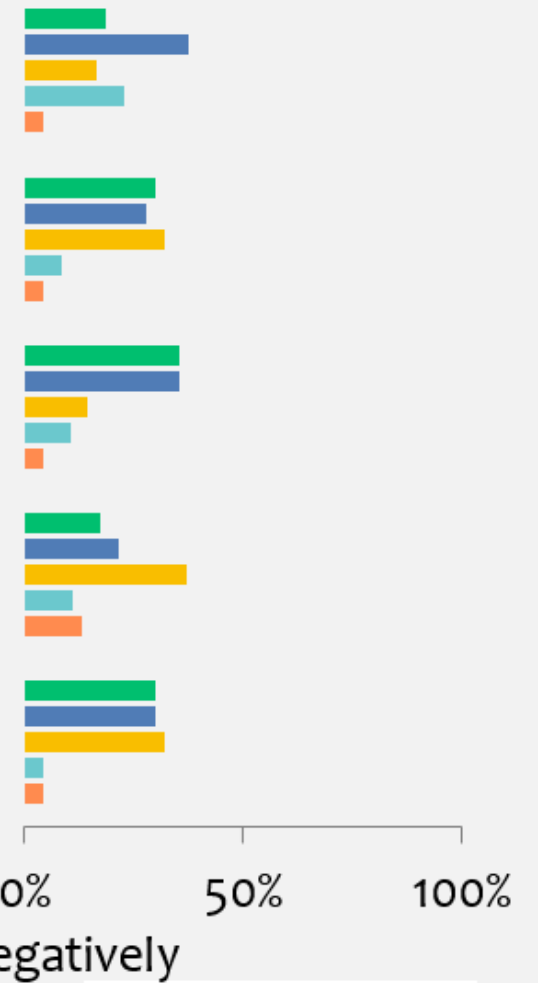
## Hikers

Answered: 98 Skipped: 30



## Equestrians

Answered: 48 Skipped: 34





# Online Survey

August – October 2024 (199 Respondents)

1. What are your thoughts on the first year of the pilot? How has your experience changed in Briones Regional Park since the Pilot Project started in April 2023?	Positive	Negative
	<b>185</b>	<b>13</b>
	93%	7%

2. How effective have the management strategies been at improving trail user conflict in the Pilot Project Zone? (Strategies include: Alternative days, Opening bootlegs, Closing/Restoring bootlegs, One-way trails, Separating Users)	Close Bootlegs	Open Bootlegs	One Way Trails	Separate User Trails	Alternative Days	
					Against	For
	<b>175</b>	<b>186</b>	<b>195</b>	<b>197</b>	<b>88</b>	<b>112</b>
	88%	93%	98%	99%	44%	56%

3. How would you like to see the management of Briones Regional Park proceed following the conclusion of the Pilot Project?	Adopt Pilot	Remove Pilot
	<b>153</b>	<b>45</b>
	77%	23%





## #6 Obtain Trail Use Data

### Success Criteria

- During the two-year term of the project monitoring and data collection from the digital tools will be conducted at least monthly.



## Trail Counters & Cameras

- 3 - Eco Counters
- 18 - TrafX Counters
- 6 - Trail Cameras

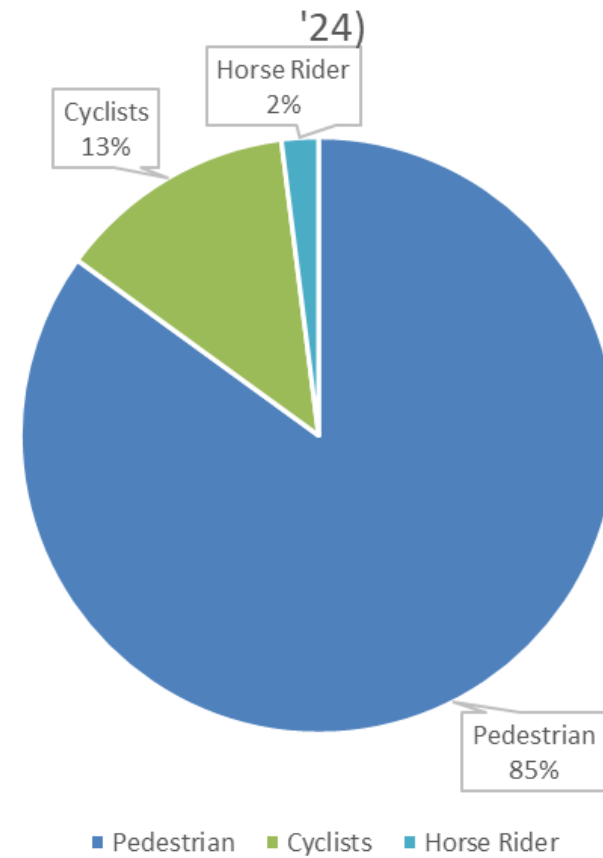
## Signs

125 signs installed



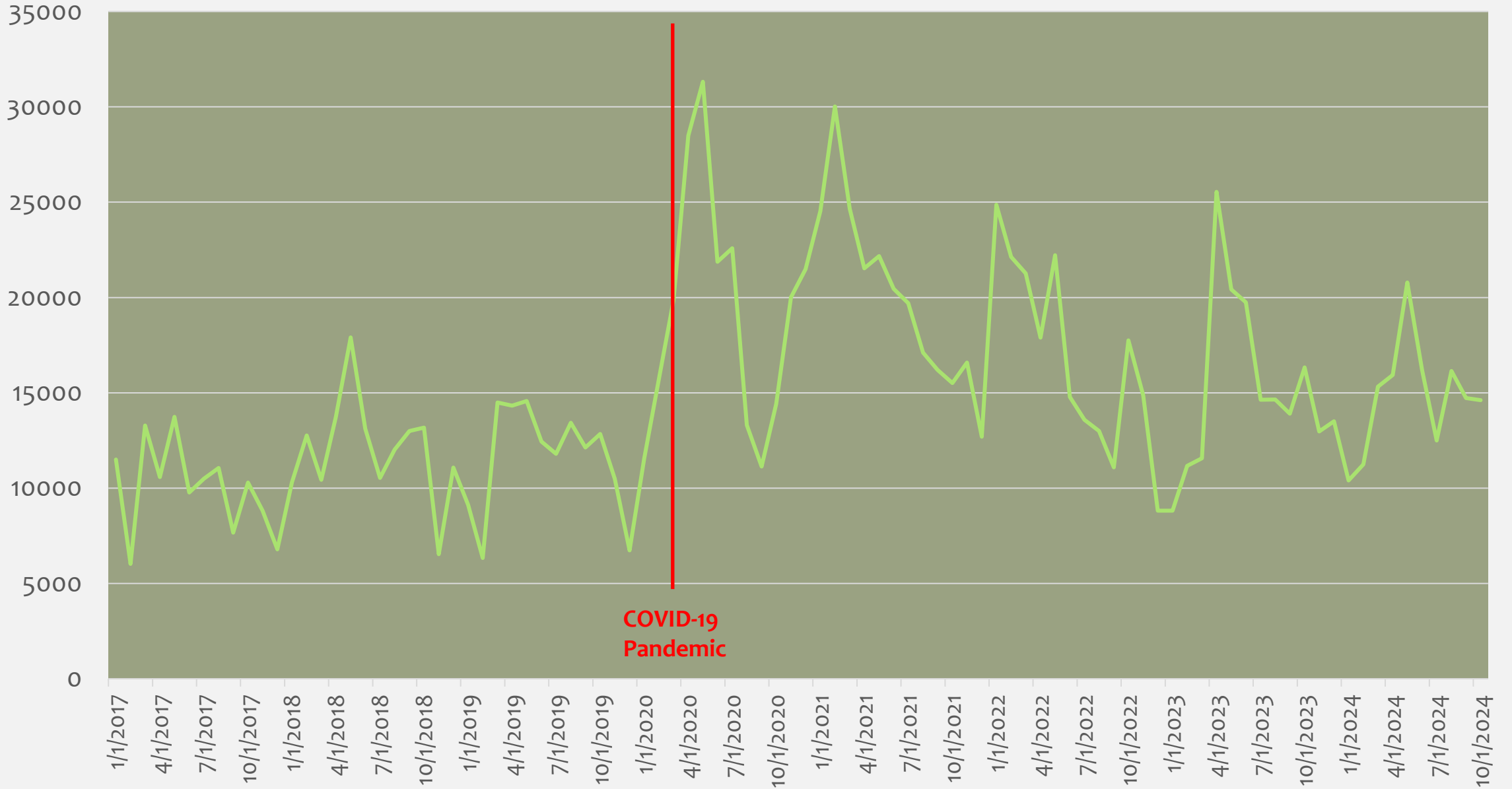
## Data Collection Methods

Distribution of Trips in Pilot Project Zone by User Type (April '23 - Nov





# Briones Visitor Trips (2017-2024)





# Briones Pilot Recommendations

Amend Attachment 'A' Ordinance 38

End the Pilot & Remove Alternate Day Restriction

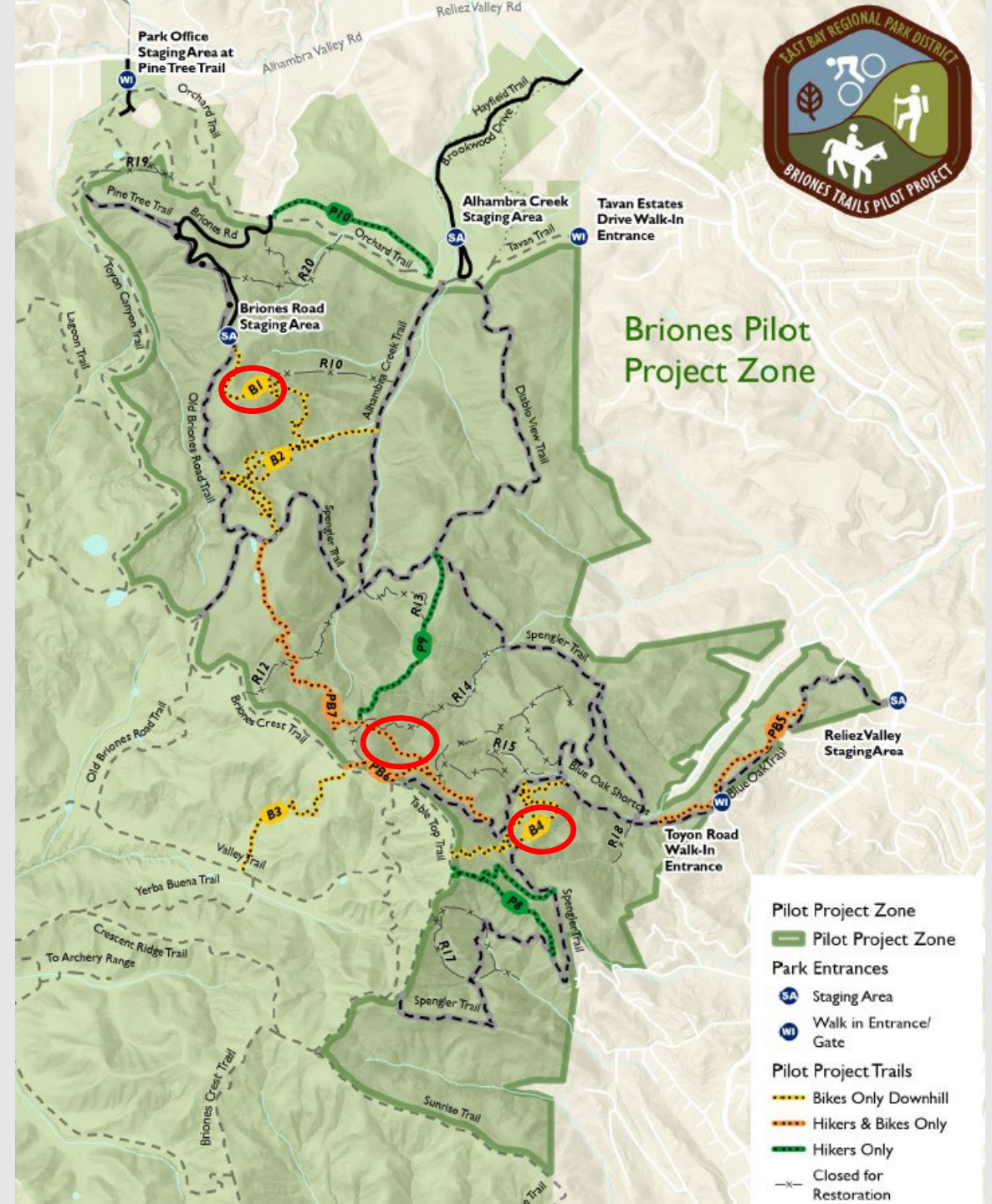
## Minor Maintenance

PB7

B1

## Change in Use

B4  
(Lower Segment)





# Attachment A: Ordinance 38

## Bicycles Not Permitted on Narrow Hiking/Riding Trails, except allowed as follows:

Designated sections of Lafayette Ridge Trail and the Hayfield Trail in Briones	Section of Skyline National Recreation Trail between Sibley Staging and Old Tunnel Road within Sibley Regional Preserve	Heron Bay Trail and Swallow Bay Trail in Del Valle
Zeile Creek Trail in Garin	Bay Leaf Trail and the North Ridge Trail (between markers 34 & 37) in Pleasanton Ridge	Brandon Trail in Lake Chabot
Panorama Trail in Mission Peak	Clyma Trail in Morgan Territory	Briones Crest Trail (north of Deer Creek Trail) and the Blue Oak Shortcut Trail in Briones
Brushy Peak Loop Trail in Brushy Peak	Hulet Hombeck Trail in Carquinez Shoreline	Edwards Loop, Wood Rat, Soaring Eagle, Warep, Two Peaks Trail, Goldfinch, Tree Frog Loop and Sugar City Trails in Crockett Hills
Vollmer Peak Trail in Tilden	Red Tail Trail in Anthony Chabot	MacDonald to Grass Valley, and Grass Valley from the aforementioned to Bort Meadow Group Camp
Towhee Trail in Anthony Chabot	Tassajara Ridge Trail	Ridgeline Trail in Pleasanton Ridge

## Bicycles are Only Permitted in the Following Areas of Redwood Regional Park:

East Ridge and West Ridge Trail loop connected by Canyon and Bridle Trails	Trails west of West Ridge Trail, except Tate Trail, which is closed to bicycle use	Canyon floor from Redwood Gate entrance to Trails End on Stream Trail
--	--	---

## Bicycles are Only Permitted in the Following Areas of Tilden Nature Study Area

Blue Gum Loop Trail to Wildcat Trail	Nimitz Way Trail	
--------------------------------------	------------------	--

## Bicycles/Personal Conveyances Only Permitted at Lake Temescal, as follows:

Must observe posted 5 mph speeds	Must walk through designated swim areas when in operation	
----------------------------------	---	--

## Bicycles are Not Permitted in the Following Locations:

Claremont Canyon Regional Preserve	Ohlone Trail from Mission Peak to Del Valle	Coyote Hills - Red Hill Trail, north of Nike Trail, Soaproot Trail from Dairy Glen north to Visitor Center, Muskrat Trail
Sibley Round Top Road from EBMUD Water Tank Road junction to top of Round Top Peak	Huckleberry Regional Preserve	Ardenwood - fenced core area
McLaughlin Eastshore State Park - interior trails of the Berkeley Meadow		

\*Under Authority of Ordinance 38 Sections 409.8(d) and 409.8(f)





# Continuing Efforts

Trail Etiquette

Volunteer  
Management

Trail Education &  
Enforcement

Park Staff  
Coordination

Community  
Engagement







## RECOMMENDED BOARD ACTION - 12-17-24

➤ **Amend Attachment A of Ordinance 38 to include trail designations and rules on 5.75 miles of trails within Briones Regional Park**

