

# FERRY POINT LOOP & SHIPYARD 3 TRAIL

RICHMOND CALIFORNIA



*Trains...bricks...ferries...troopships! The 40 years between trains entering Richmond's Ferry Point to send passengers and freight to San Francisco and ships emerging from Kaiser's shipyards to help defeat the nation's World War II enemies is a story of coastline transformation hardly matched in California's history. On these trails are many interpretive exhibits with historic images and compelling stories.*

## Map Legend

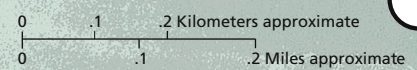
|  |                                                                                           |
|--|-------------------------------------------------------------------------------------------|
|  | Bay Trail suitable for walking, biking, roller skating & wheelchair access                |
|  | Kaiser Shipyard 3 Bay Trail                                                               |
|  | East Bay Regional Park District hiking trails                                             |
|  | Distance markers and mileage between two markers                                          |
|  | Visitor Information                                                                       |
|  | Parking                                                                                   |
|  | Restrooms                                                                                 |
|  | Bus Stop / AC Transit #72M                                                                |
|  | Drinking Water                                                                            |
|  | Fishing                                                                                   |
|  | Picnic area                                                                               |
|  | Dining / Food                                                                             |
|  | Tot lot                                                                                   |
|  | Showers                                                                                   |
|  | Swimming                                                                                  |
|  | Small Watercraft*<br>*Launch and landing sites for the San Francisco Bay Area Water Trail |
|  | Tennis Courts                                                                             |

**i** East Bay Regional Park District | [www.ebparcs.org](http://www.ebparcs.org)  
 Golden State Model Railroad Museum | [www.gsmrm.org](http://www.gsmrm.org)  
 Richmond Museum of History | [www.richmondmuseum.org](http://www.richmondmuseum.org) | 510-235-7387  
 Rosie the Riveter World War II Home Front, National Historical Park | [www.nps.gov/rori](http://www.nps.gov/rori) | 510-232-5050  
 San Francisco Bay Trail | [www.pointrichmond.com/bay-trail/](http://www.pointrichmond.com/bay-trail/) | [www.baytrail.org](http://www.baytrail.org)  
 S. S. Red Oak Victory | [www.redoakvictory.us](http://www.redoakvictory.us) | 510-237-2933



### Must see, must do ...

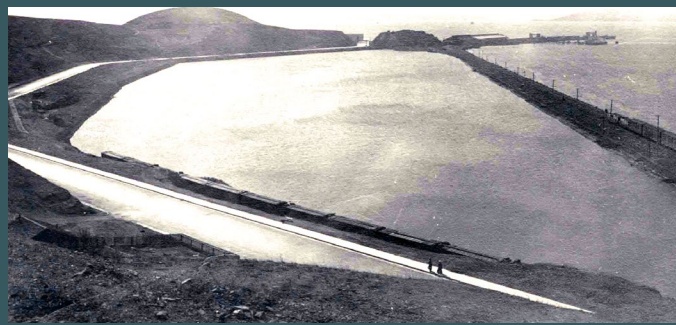
- ▶ Wade in the Bay at sandy Keller Beach.
- ▶ Fly a kite along the shoreline; fish from the Ferry Point pier.
- ▶ See remnants of historic Kaiser Shipyard 3 and visit the S. S. Red Oak Victory.
- ▶ Hike the hillside and ridgeline trails to enjoy sweeping vistas of San Francisco Bay.
- ▶ Visit the Golden State Model Railroad Museum.
- ▶ Picnic and birdwatch at Miller/Knox lagoon; bring binoculars.
- ▶ Shop, snack and dine in Point Richmond Historic District.





# Ferry Point Loop & Shipyard 3 Trail Guide

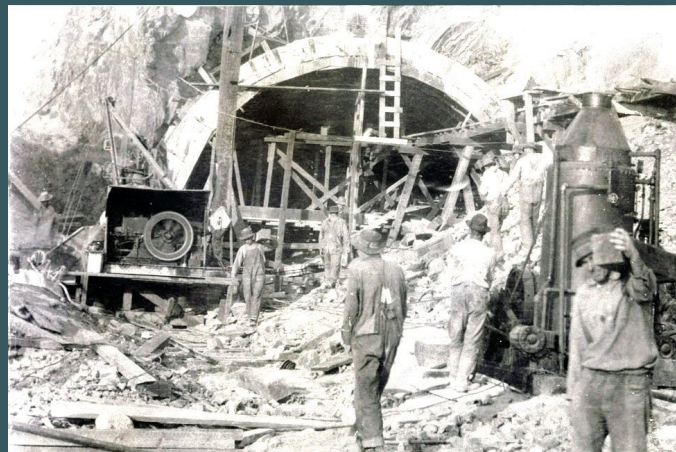
San Francisco Bay Trail  
Richmond, California



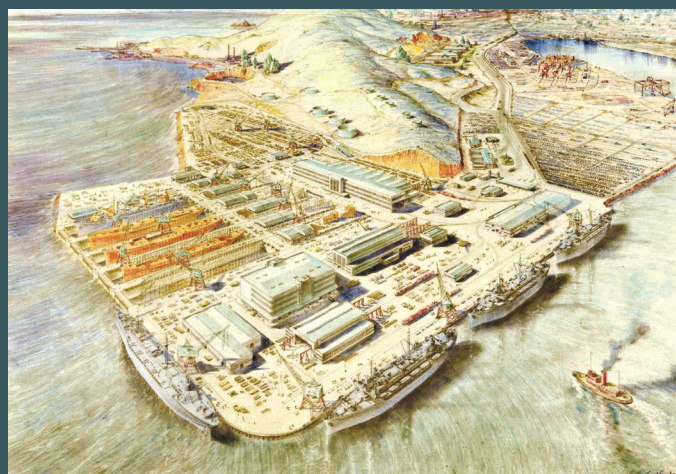
Lagoon formed by Santa Fe rail line (now the home of Miller/Knox park)



Los Angeles Pressed Brick Company



Building the Ferry Point Tunnel in 1914

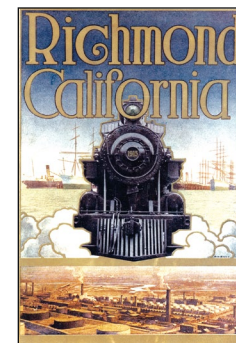


Kaiser Shipyard 3, Point Potrero in 1943

## TIMELINE | RICHMOND'S FERRY POINT LOOP HISTORY

**1900** Santa Fe Railroad completes railroad tunnel through the Potrero hills, running its tracks to Richmond Point. From there, ferries transport cargo, train cars, and passengers to San Francisco. The tracks, built on fill, enclose a small bay, which becomes a lagoon. In time, Richmond Point takes on the name by which it is known today, Ferry Point.

**1907** The Los Angeles Pressed Brick Company (later the Richmond Pressed Brick Company) begins operations in the area later to be known as Brickyard Cove. Supplying bricks to San Francisco, rebuilding after the disastrous earthquake of 1906, the brickyard provides bricks for many Richmond buildings. Ceasing operations in the 1960s, two kilns and a smokestack today mark the spot where this important industry was located.



**1915** No date figures as prominently in the history of pre-war Richmond. With the opening of the Panama Canal, Richmond seeks to take its place as a major Pacific port, and joins enthusiastically in the festivities taking place in San Francisco, at the Panama-Pacific Exposition. To handle the expected trade, a new municipal wharf, Richmond's first, is built just to the east of Ferry Point. A new tunnel and roadway are completed, leading to the wharf. In the same year, a ferry system begins operations between

Richmond and San Rafael. Construction begins on a brand-new city hall, the first to be built to the east of 23rd Street.

**1926** The Richmond Natatorium (the "Plunge") opens. Thousands of Richmondites learn to swim in the warm waters of this large municipal pool.



**1942** Work begins on construction of Kaiser Shipyard 3, to produce troopships for the U.S. Navy during World War II. Of the four shipyards built in Richmond during the war, this is the only one remaining. On the National Register of Historic Places, it is also the current home of the S.S. Red Oak Victory, the only ship built in Richmond during the war that has not been scrapped.

**1970** Miller/Knox Regional Shoreline, part of the East Bay Regional Park District (EBRPD) opens to the public. In 1977, Keller Beach park is transferred to the EBRPD by the City of Richmond, becoming part of Miller/Knox Regional Shoreline.

**2000** Legislation passes to create Rosie the Riveter/World War II Home Front National Historical Park that includes historic Kaiser Shipyard 3.

### Trail Etiquette

As more of us enjoy the Bay Trail - walkers, joggers, bicyclists, skaters, wheelchair users, and families with strollers - please show courtesy and be safe by following these few simple guidelines.

Keep to the right of the trail and save the left side for passing.

Observe posted bike speeds. Adjust your riding speed. Call out or ring your bell when approaching other trail users, especially from behind.

Respect the privacy of adjacent residents and stay on the trail.

Please don't litter. Keep your trail clean and beautiful.

Enjoy watching wildlife from a respectful distance, and please don't feed the animals.

Keep your dog on a leash and pick up after your pet - rainwater washes waste into the bay.

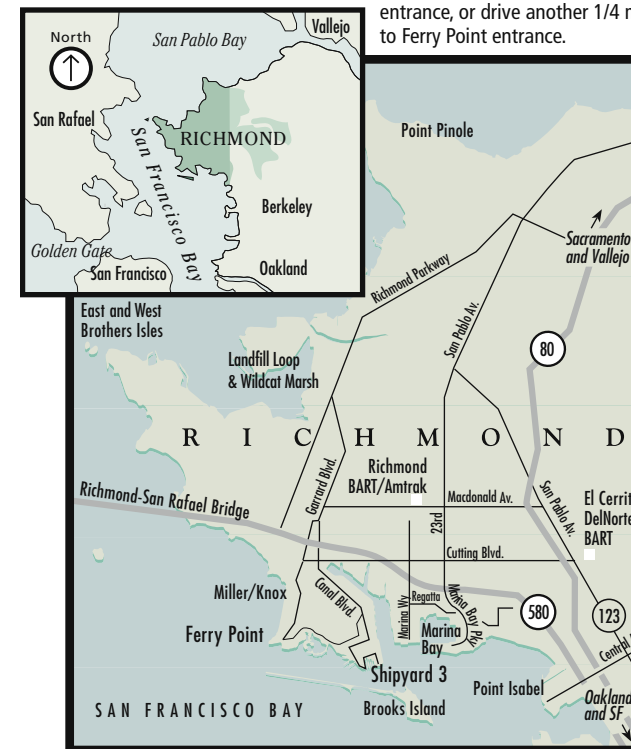
Follow park use and parking rules - dawn to dusk.

### Directions to Miller/Knox Regional Shoreline and Ferry Point

**From BART:** Richmond BART/Amtrak Station; Exit to south toward Macdonald Ave.; Board AC Transit Bus #72M. Get off at the intersection of S. Garrard Blvd. and W. Cutting Blvd. From the bus stop, walk south on S. Garrard Blvd. through tunnel (S. Garrard Blvd. becomes Dornan Drive). Main park entrance is 1/3 mile farther south on Dornan Drive. To confirm bus schedule visit [www.511.org](http://www.511.org).

**From East Bay:** From I-580 in Richmond, exit at Canal Blvd. Turn left onto Canal Blvd. Turn right onto W. Cutting Blvd., then left onto S. Garrard Blvd. Proceed through the tunnel (S. Garrard Blvd. becomes Dornan Drive) for 1/2 mile. Turn right into main park entrance, or drive another 1/4 mile to Ferry Point entrance.

**From San Rafael:** From I-580 in San Rafael, cross the Richmond-San Rafael Bridge. Exit at Canal Blvd. Turn right onto Canal Blvd. Turn right onto W. Cutting Blvd., then left onto S. Garrard Blvd. Proceed through the tunnel (S. Garrard Blvd. becomes Dornan Drive) for 1/2 mile. Turn right into main park entrance, or drive another 1/4 mile to Ferry Point entrance.



This guide is produced with support from Trails for Richmond Action Committee (TRAC), Rosie the Riveter / WW II Home Front National Historical Park, East Bay Regional Park District, Richmond Museum of History, and City of Richmond.

Cover photo by Bruce Beyer. All historical images courtesy of the Richmond Museum of History.

