

Fuels Treatment Overview

Recommended Treatment Areas TI012, 013, 014, 015, 016

Grizzly Peak Strategic Fuel Break Collaboration

Tilden Regional Park

Background: In 2010, the East Bay Regional Park District's Board of Directors approved the *Wildfire Hazard Reduction and Resource Management Plan* ("Plan") and the accompanying CEQA (California Environmental Quality Act) document which covers hill and shoreline parklands from Richmond to Castro Valley within the Measure CC (Measure FF) funded area. The approved Plan is an integral component of the Park District's Safe and Healthy Forests initiative for wildfire protection.

This project is part of the multi-agency Grizzly Peak Strategic Fuel Break Collaboration funded by a CAL Fire grant. Partners in this grant are the East Bay Regional Park District, EBMUD, UC Berkeley, the City of Berkeley, and the Hills Emergency Forum (HEF). EBRPD work locations are Recommended Treatment Areas (RTA) TI012, 013, 014, 015, and 016.

Why: This project will facilitate safer evacuations and reduce fire intensity along roads and ridgelines close to the wildland urban interface. EBRPD fuels projects establish zones of natural habitat that are resistant to wildfires, more accessible for firefighters, and less fire-prone by reducing hazardous wildland vegetation in the wildland-urban interface. Trees such as pine and eucalyptus that are prone to torching and throwing embers long distances in the wind will be thinned out or removed along with dead, diseased, or leaning trees that threaten powerlines and roads, heavy surface fuel accumulations, and roadside brush. Work will take place on Park District property along 3.5 miles of Golf Course Drive, Grizzly Peak Blvd, South Park Drive, Lomas Contadas Avenue, and around the Tilden Corporation Yard. Healthy native oak and bay trees will be preserved and pruned. Some of the logs and branches will be chipped or masticated onsite, some will be completely removed, and some material will be left in piles to be burned during the rainy season. The work is prescribed by FEMA and fully permitted by State and Federal environmental regulatory agencies. Homeowners should continue to clear vegetation on their own property and take appropriate measures to protect their homes against wildfire.

Who: The Park District's Fire Department is managing the project. Various crews and contractors will be performing the initial work and ongoing maintenance. Contractors may be using heavy equipment and chippers. The Park District's Stewardship Department and consulting biologists will be closely monitoring to ensure appropriate resource protection. The Park District's survey department may be surveying and marking some of the property boundaries to help us make sure we perform work on District lands.

When: Several phases of work will occur throughout 2024 and 2025. Contractors will work along Golf Course Drive and Grizzly Peak Blvd in the summer months of 2025. The Park District and its contractors will minimize the impact to park users by restricting work hours to weekdays (7:30 am to 4:30 pm) and temporarily redirecting trail use, if necessary. Roadside work may require a single lane closure with traffic control or temporary road closures with detours.

Additional

Information: More information about the Park District's Wildfire Hazard Reduction and Resource Management Plan and specific maps and reports can be found at:

<https://www.ebparks.org/resource-managment/wildfire-resilience>

Updates to the current fuels management projects can be found by scrolling down the appropriate Recommended Treatment Area at:

<https://www.ebparks.org/public-safety/fire/fuels-management/update>

Information about the Grizzly Peak Strategic Fuel Break Collaboration can be found at:

<https://storymaps.arcgis.com/stories/179810f4d16341a4b37ec360799683f9>



Roadside clearing along Golf Course Drive



Using a crane to remove dead pines with limited access over rare native plants



Before and after roadside clearing along Golf Course Drive



Before and after thinning trees, clearing heavy brush and down woody material above Golf Course Drive –
 * Note this location appears very bare but native plants will soon grow back and cover the ground



Grapple truck used for loading and transporting woody material



Boom-mounted masticator clearing brush



Burn piles behind the Tilden Corporation Yard, home to Fire Station I, North County Equipment Shop, Skilled Trades, Tilden Park Rangers, Water Quality, Fisheries, Central Stores, and a Park Residence

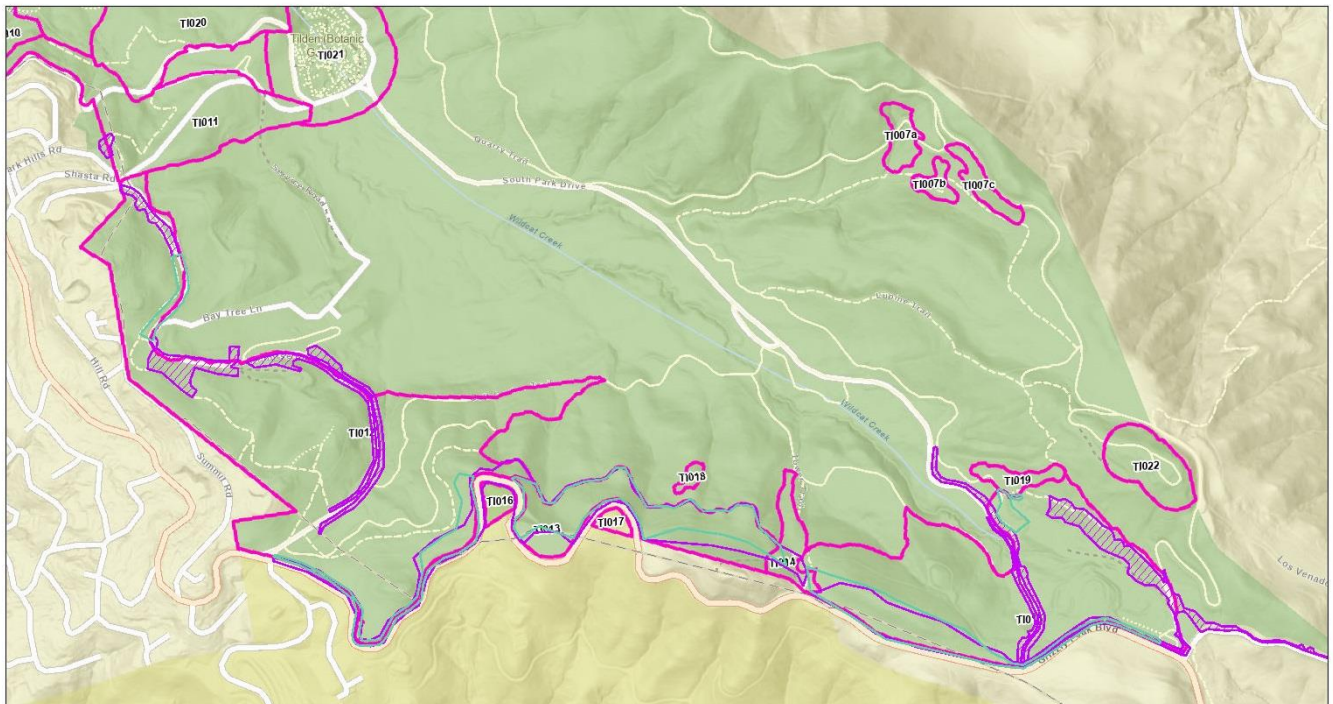


Park District firefighters burning piles along Golf Course Drive



All piles are thoroughly extinguished and confirmed as “out cold” before fire crews depart

Grizzly Peak Strategic Fuel Break



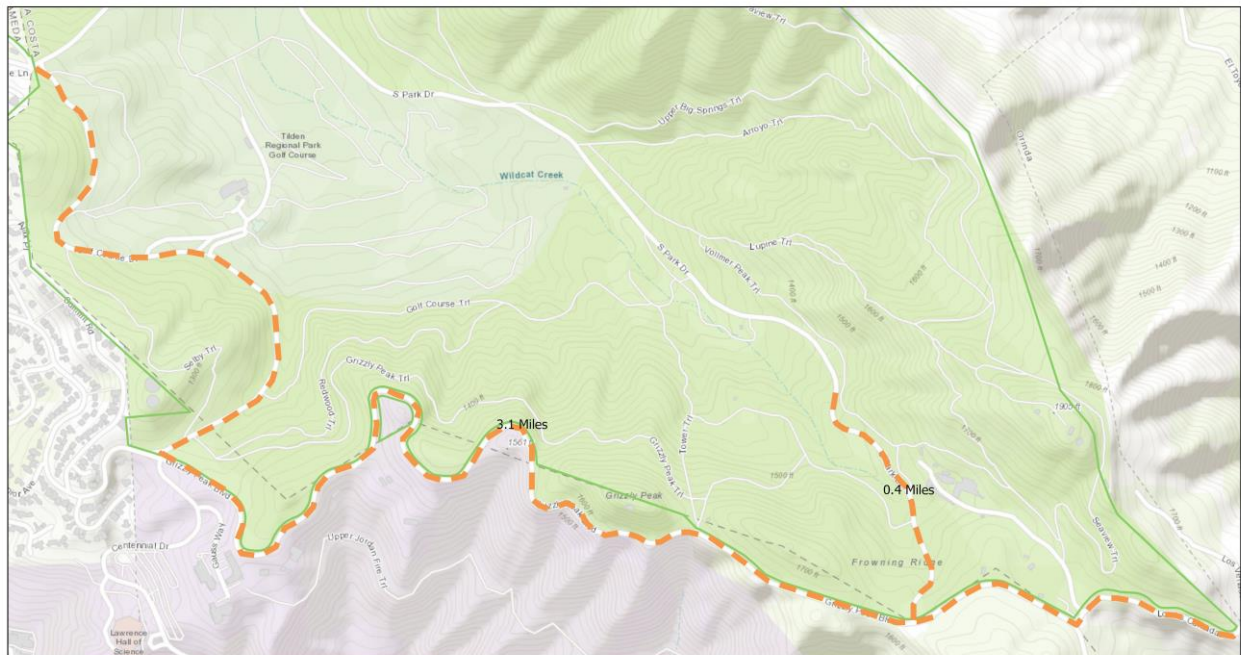
1/23/2025, 10:21:53 AM

Initial Treatment RTA 2025 Initial Treatment (RTA) 2024 RTAs
 Planned Completed
 RTA Labels (38,400)

1:9,786
 0 0.1 0.2 0.4 mi
 0 0.15 0.3 0.6 km

Esri, NASA, NGA, USGS, FEMA

Golf Course-Grizzly Peak-South Park-Lomas Contadas



3/4/2024, 3:12:21 PM

EBRPD Parklands Merged

1:9,028
 0 0.07 0.15 0.3 mi
 0 0.13 0.25 0.5 km

Grizzly Peak Collaborative Ridgeline Fuel Break - Fuels Treatment Overview
 Last update: January 24, 2025