

MORGAN TERRITORY REGIONAL PRESERVE

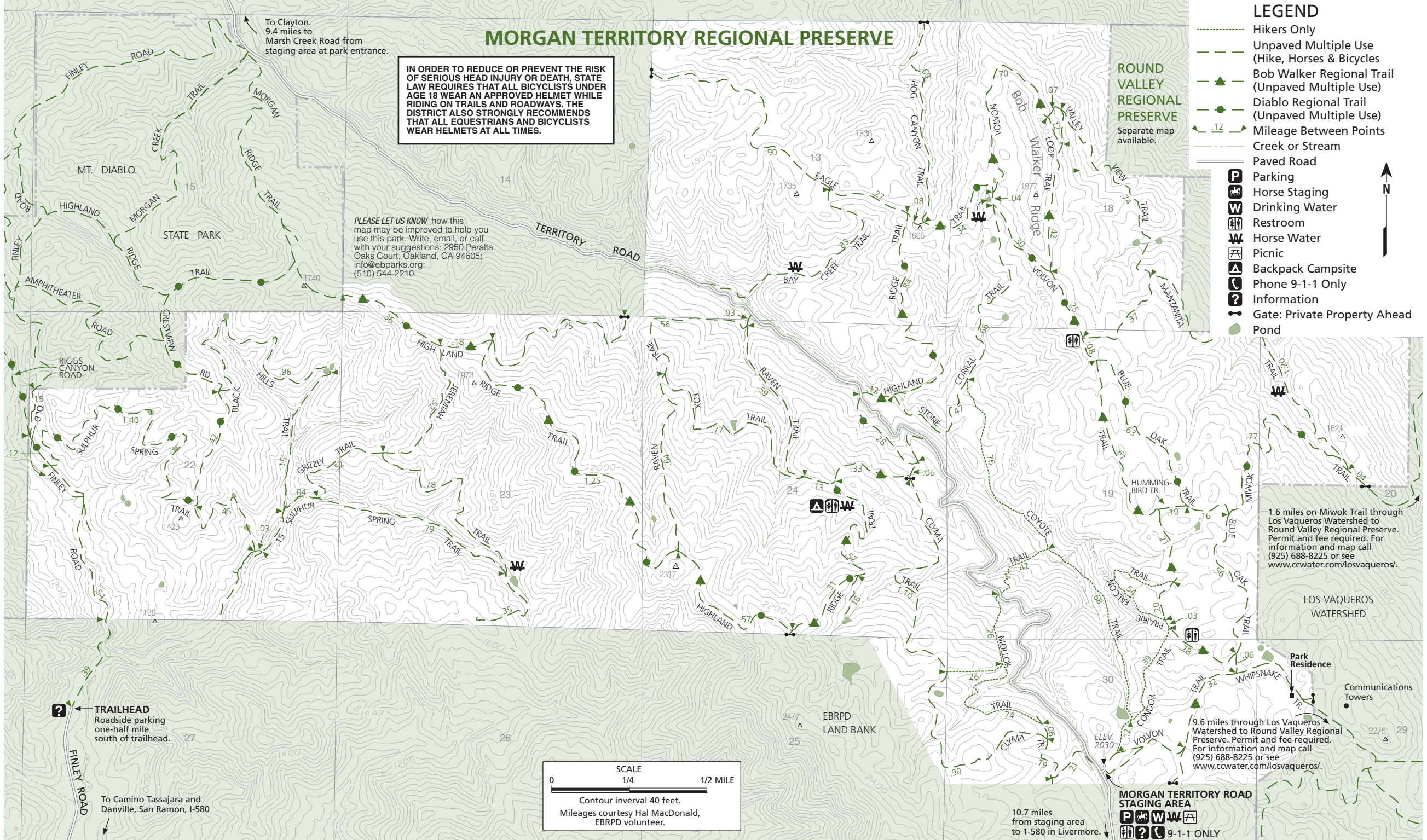
IN ORDER TO REDUCE OR PREVENT THE RISK OF SERIOUS HEAD INJURY OR DEATH, STATE LAW REQUIRES THAT ALL BICYCLISTS UNDER AGE 18 WEAR AN APPROVED HELMET WHILE RIDING ON TRAILS AND ROADWAYS. THE DISTRICT ALSO STRONGLY RECOMMENDS THAT ALL EQUESTRIANS AND BICYCLISTS WEAR HELMETS AT ALL TIMES.

PLEASE LET US KNOW how this map may be improved to help you use this park. Write, email, or call with your suggestions: 2950 Peralta Oaks Court, Oakland, CA 94605; info@ebparks.org; (510) 544-2210.

LEGEND

- Hikers Only
- Unpaved Multiple Use (Hike, Horses & Bicycles)
- Bob Walker Regional Trail (Unpaved Multiple Use)
- Diablo Regional Trail (Unpaved Multiple Use)
- Mileage Between Points
- Creek or Stream
- Paved Road
- Parking
- Horse Staging
- Drinking Water
- Restroom
- Horse Water
- Picnic
- Backpack Campsite
- Phone 9-1-1 Only
- Information
- Gate: Private Property Ahead
- Pond

ROUND VALLEY REGIONAL PRESERVE
Separate map available.



To Clayton, 9.4 miles to Marsh Creek Road from staging area at park entrance.

TRAILHEAD
Roadside parking one-half mile south of trailhead.

To Camino Tassajara and Danville, San Ramon, I-580

SCALE
0 1/4 1/2 MILE
Contour interval 40 feet.
Mileages courtesy Hal MacDonald, EBRPD volunteer.

1.6 miles on Miwok Trail through Los Vaqueros Watershed to Round Valley Regional Preserve. Permit and fee required. For information and map call (925) 688-8225 or see www.ccwater.com/losvaqueros/.

9.6 miles through Los Vaqueros Watershed to Round Valley Regional Preserve. Permit and fee required. For information and map call (925) 688-8225 or see www.ccwater.com/losvaqueros/.

MORGAN TERRITORY ROAD STAGING AREA
P H W W
9-1-1 ONLY

10.7 miles from staging area to I-580 in Livermore.