

KENNEDY GROVE - KG003

FUELS MANAGEMENT PRESCRIPTION

SITE DESCRIPTION AND LOCATION:

The treatment area is 3.7 acres of eucalyptus forest and oak/bay woodland located around park office and other structures in Kennedy Grove Regional Recreation Area. Best access is through the Kennedy Grove Park Entrance.

VEGETATION MANAGEMENT GOALS:

Landscaping, exotic trees, oaks

FUELS MANAGEMENT OBJECTIVE:

1. Create and maintain defensible space around park structures.
2. Remove accumulations of ladder fuels and reduce potential for crown fires.

RESOURCE OBJECTIVES AND CONSIDERATIONS:

- Conduct all initial work during the period from July 31st to Jan. 31st to avoid disturbance to nesting raptors and song birds, as recommended by the District's biologist. If work will occur during nesting season, Stewardship will conduct a pre-work nesting survey within 15-days of work beginning and flag any buffer sites around identified nests.
- Conduct surveys and treatment activities in oak and bay habitat to identify and avoid dusky-footed woodrat nests. Any nest will have a buffer zone described by the current protocol developed by Stewardship.
- Stream buffer considerations for areas marked in blue on the map (buffer is 30 feet on each side of stream course):
 - No raking of duff in stream buffer zones.
 - Hand removal of downed woody debris in buffer zones may be conducted if material is not embedded in the ground and does not over hang the stream. No embedded material can be removed.
 - No downed woody debris can be removed or limbed up if it overhangs the active channel. Removing downed material over a stream will require permits.
 - Trees within the buffer zones can be limbed up, although no limbing up of trees adjacent (i.e. limbs overhanging channel, tree roots part of bank structure) to the stream channel can occur without acquiring permits.
 - No trees adjacent to stream channels (i.e. limbs overhanging channel, tree roots part of bank structure) shall be removed without permits.
 - Trees within the buffer zones can be cut but will need to be approved by Stewardship prior to removal.
 - If ground disturbance occurs in the buffer zones during fuel reduction activity, erosion control BMPs will need to be applied.

FUELS TREATMENT PRESCRIPTION:

Initial Treatment

Remove eucalyptus trees under 6" dbh and dispose of all material offsite, including branches and tops. To minimize ground disturbance, heavy equipment and other vehicles should remain on fire trails wherever feasible. Cut stumps as close as possible to ground level. Per the District's Integrated Pest Management pest control recommendation, eucalyptus stumps will be treated by a certified applicator with Garlon-4 Ultra within one hour of cutting to prevent re-sprouting.

In the eucalyptus groves, remove accumulations of surface fuels such as forest litter, downed logs, branches, bark, and leaves, with minimal disturbance to duff layer. Logs determined to be imbedded in the soil will be left in place.

Hazard Trees

Though not necessarily posing a significant fuels management problem, hazard trees along trails or close to the park office area should be assessed by park staff and treated appropriately.

Follow-up/Maintenance (Note: if initial treatment is spread over more than one year, adjust the maintenance schedule as needed to accommodate)

YEAR	FUELS TREATMENT
01	Initial Treatment.
02-03	Remove eucalyptus seedlings and treat eucalyptus resprouts with herbicide.
04	Monitor site for weed invasion; remove or treat weeds with herbicide.
05	Reduce/remove ladder and surface fuels that have accumulated since year 1. Remove eucalyptus seedlings, cut eucalyptus sprouts, and treat with herbicide. Monitor site for other weed invasion; remove or treat weeds with herbicide.
10	Reduce/remove ladder and surface fuels that have accumulated since year 1. Remove eucalyptus seedlings, cut eucalyptus sprouts, and treat with herbicide.
15	Reduce/remove ladder and surface fuels that have accumulated since year 1. Remove eucalyptus seedlings, cut eucalyptus sprouts, and treat with herbicide.
20	Reduce/remove ladder and surface fuels that have accumulated since year 1. Remove eucalyptus seedlings, cut eucalyptus sprouts, and treat with herbicide.
25	Reduce/remove ladder and surface fuels that have accumulated since year 1. Remove eucalyptus seedlings, cut eucalyptus sprouts, and treat with herbicide.
30	Reduce/remove ladder and surface fuels that have accumulated since year 1. Remove eucalyptus seedlings, cut eucalyptus sprouts, and treat with herbicide.

MONITORING:

Staff from the District's Fire Department, Planning/Stewardship, and Operations will evaluate the success and efficacy of the initial and follow-up fuels treatments. Monitoring results will be documented.

PRESCRIPTION PREPARED BY:

Brad Galloway
Fire Captain, EBRPD

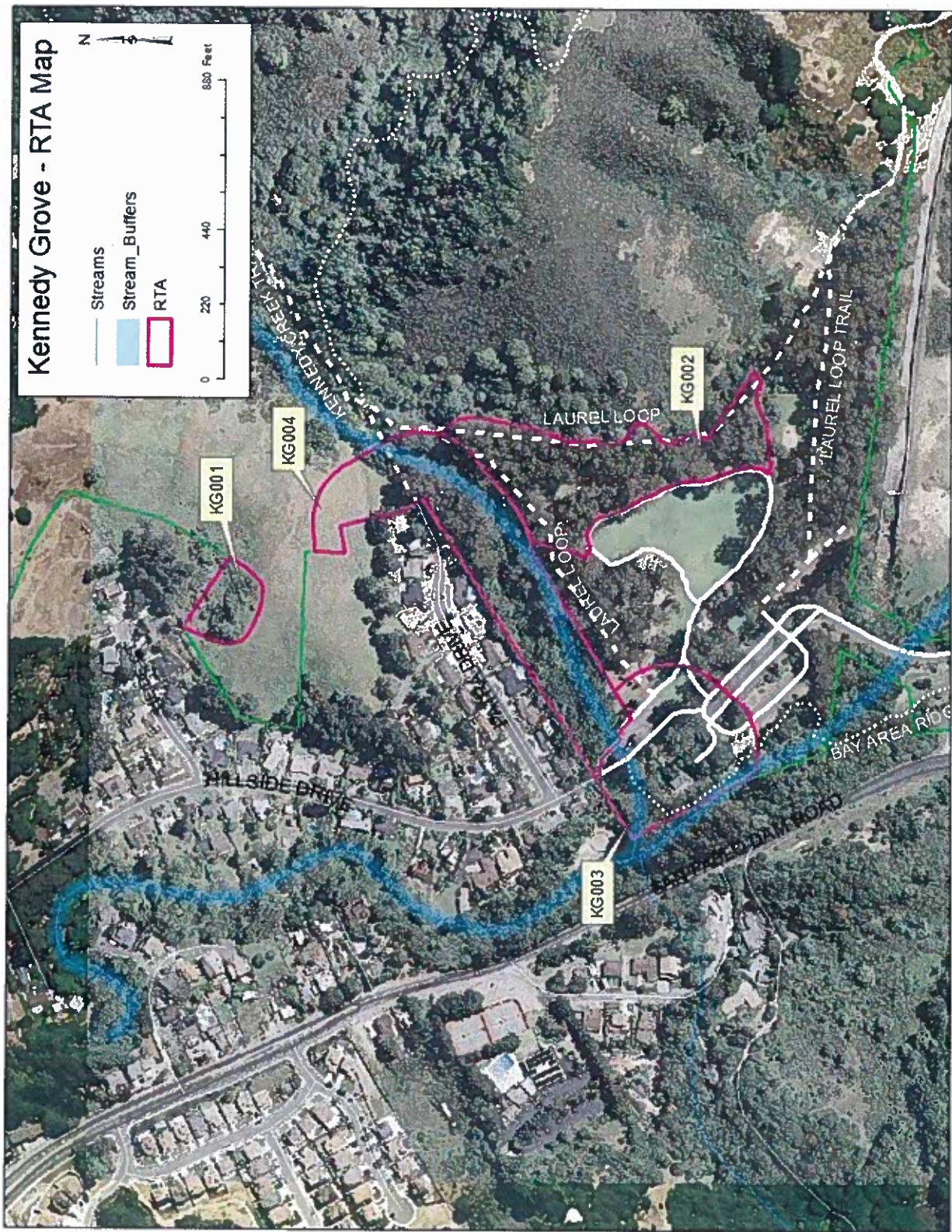
[Signature]
Signature

8/21/12
Date

REVIEW AND APPROVAL:

This prescription meets the District's standards for fuels management, natural resource protection and achievement of Best Management Practices according to the Wildfire Hazard Reduction and Resource Management Plan and is consistent with the mitigation measures contained in the EIR:

for <u>JOHN R. SWANSON</u> Fire Chief, EBRPD	JRS 08-21-2012	<u>[Signature]</u> Signature	<u>08.23.2012</u> Date
<u>NEAL FUJITA</u> Stewardship Manager, EBRPD		<u>[Signature]</u> Signature	<u>8/23/12</u> Date



Kennedy Grove KG003 Fuels Management Prescription
8/21/2012