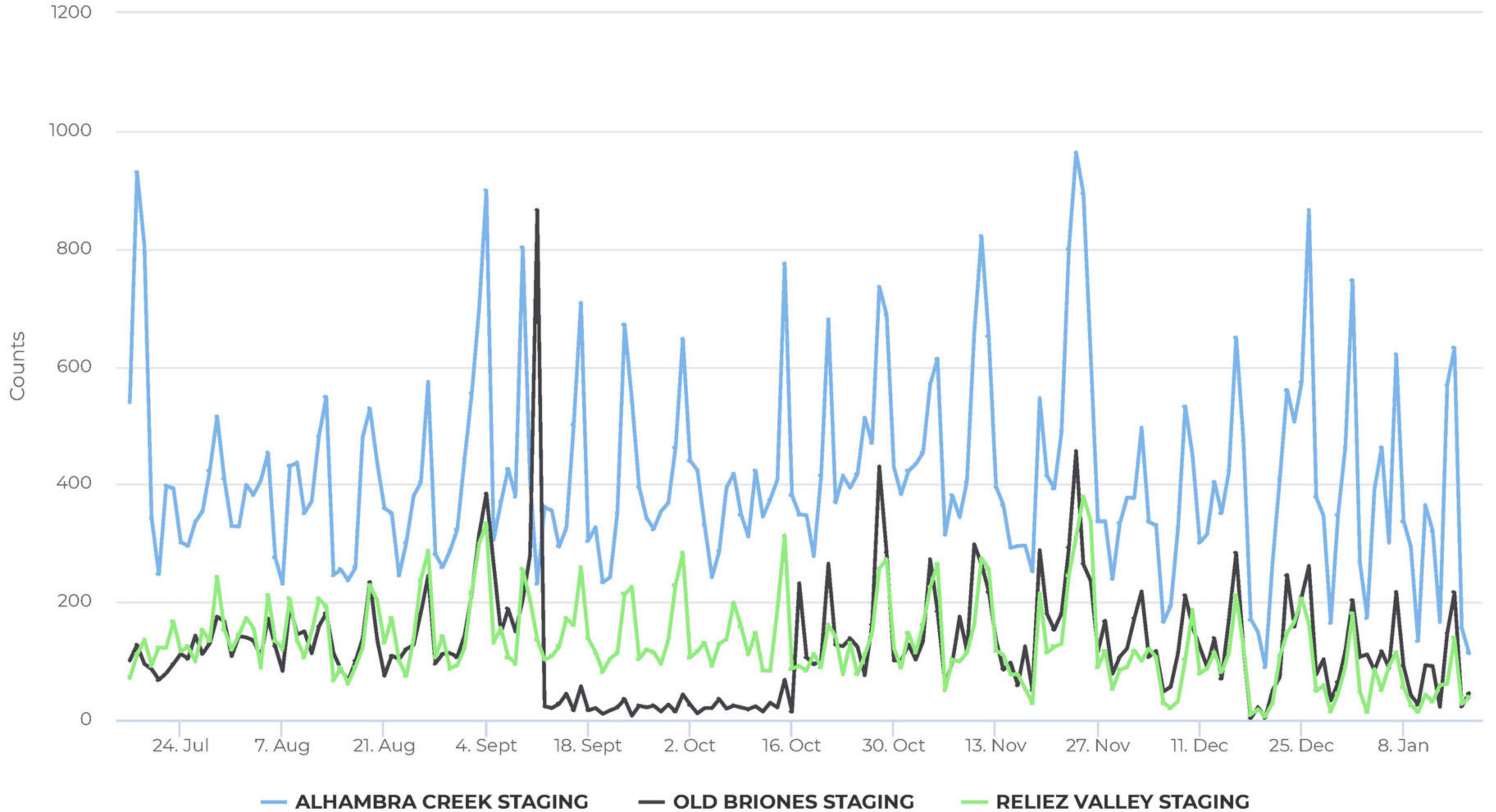


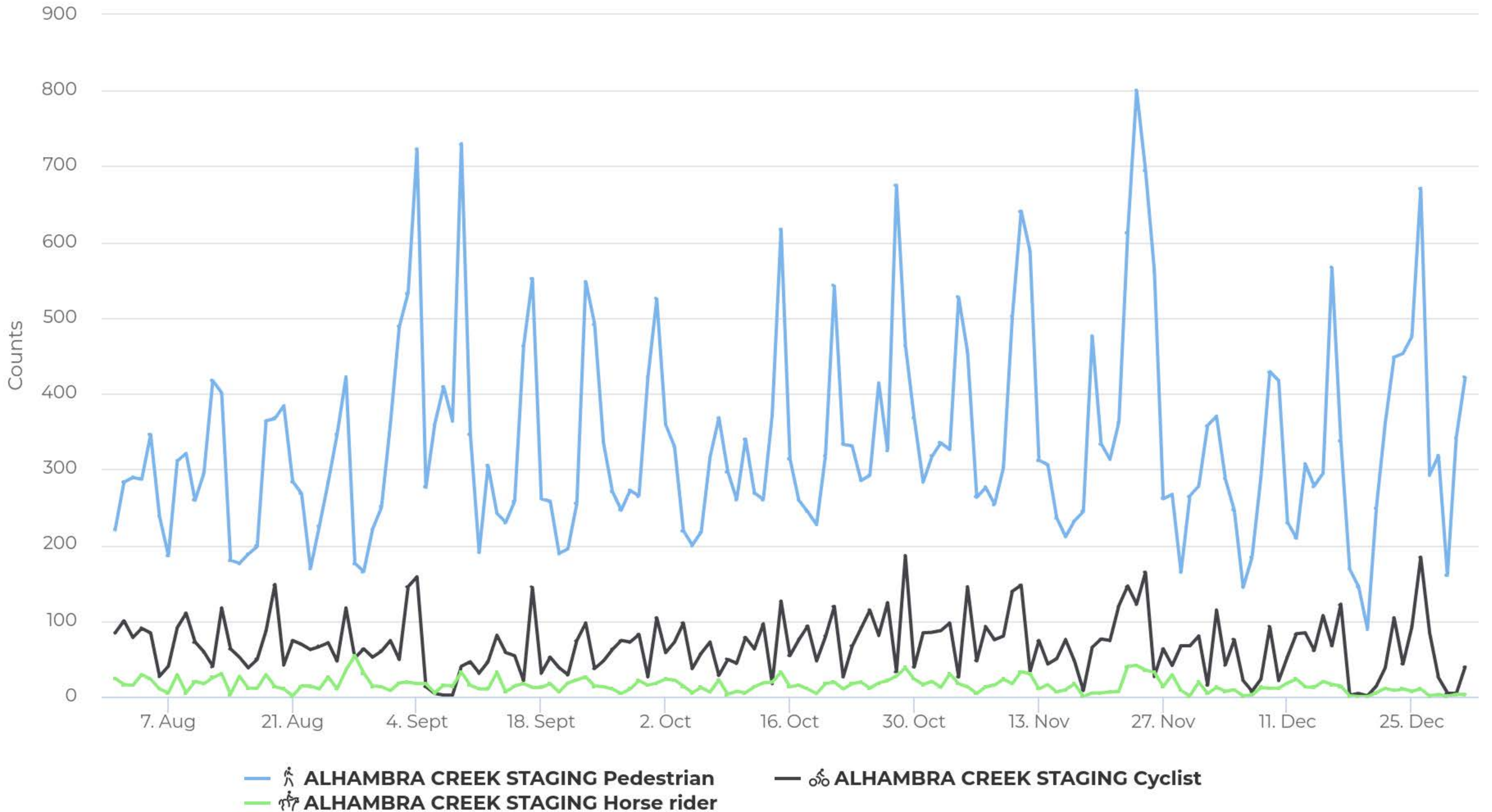
Daily traffic

July 17, 2023 → January 17, 2024



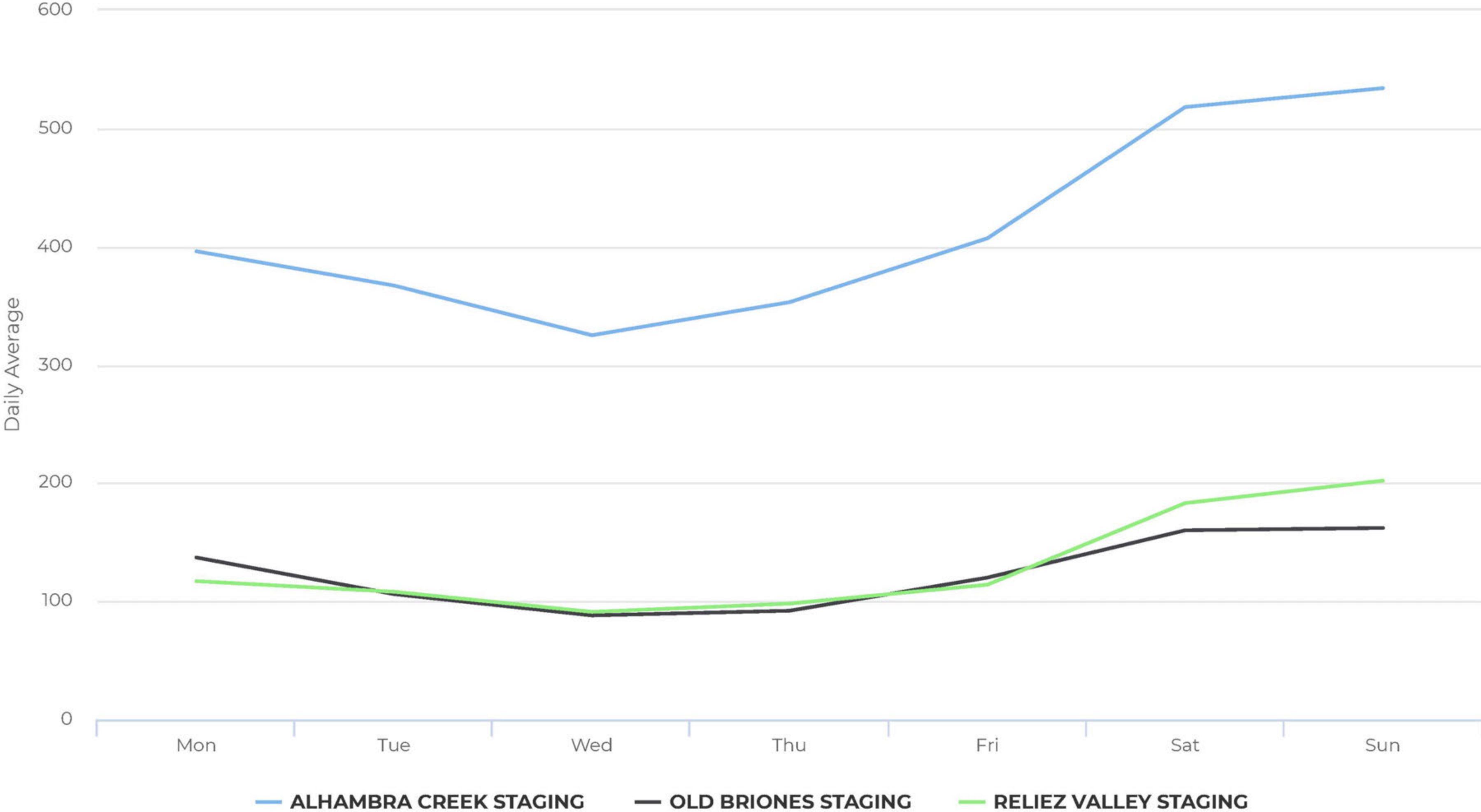
Daily traffic

August 1, 2023 → December 31, 2023



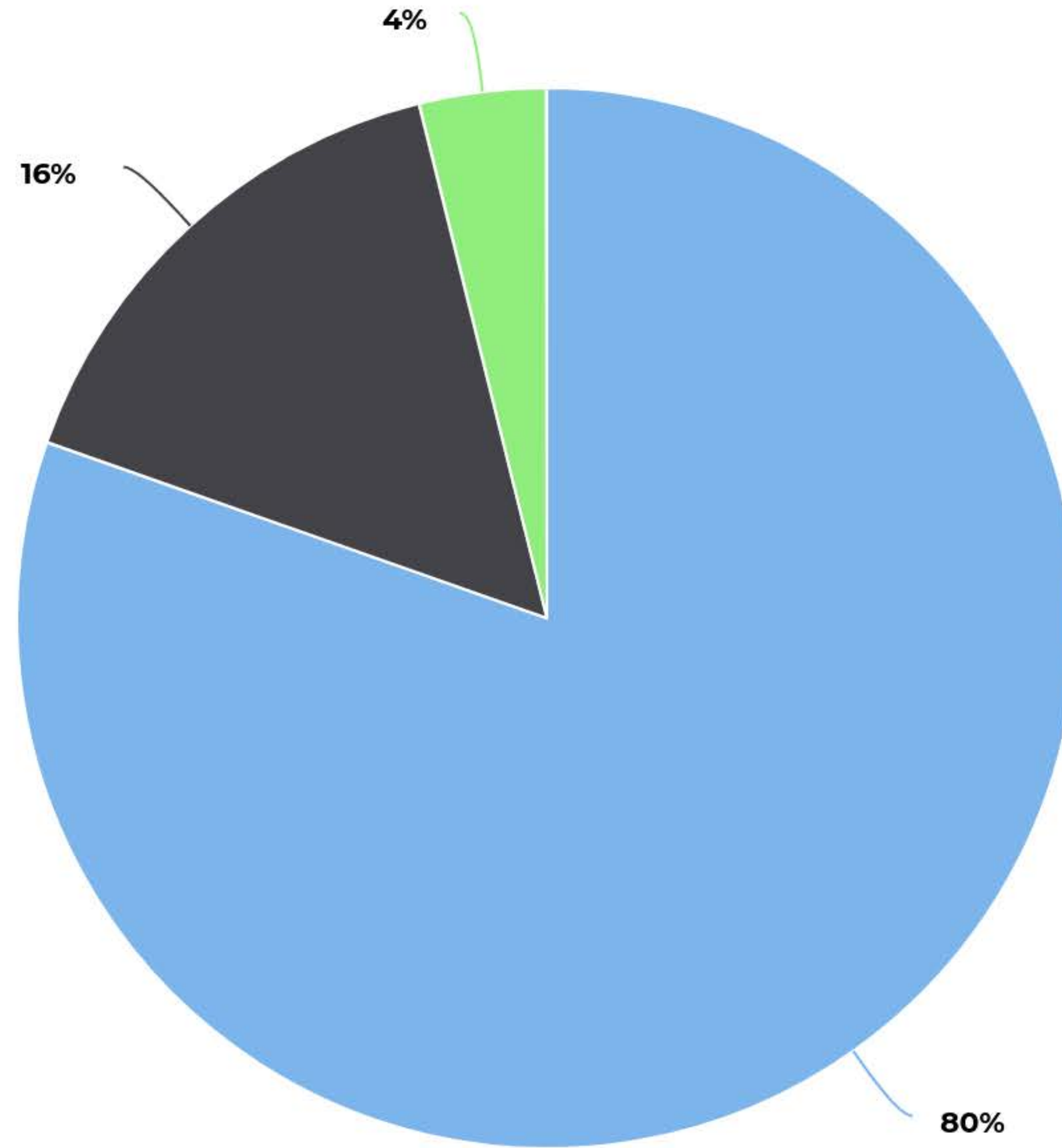
Daily Profile

July 17, 2023 → January 17, 2024



Distribution by User Type

July 17, 2023 → January 17, 2024

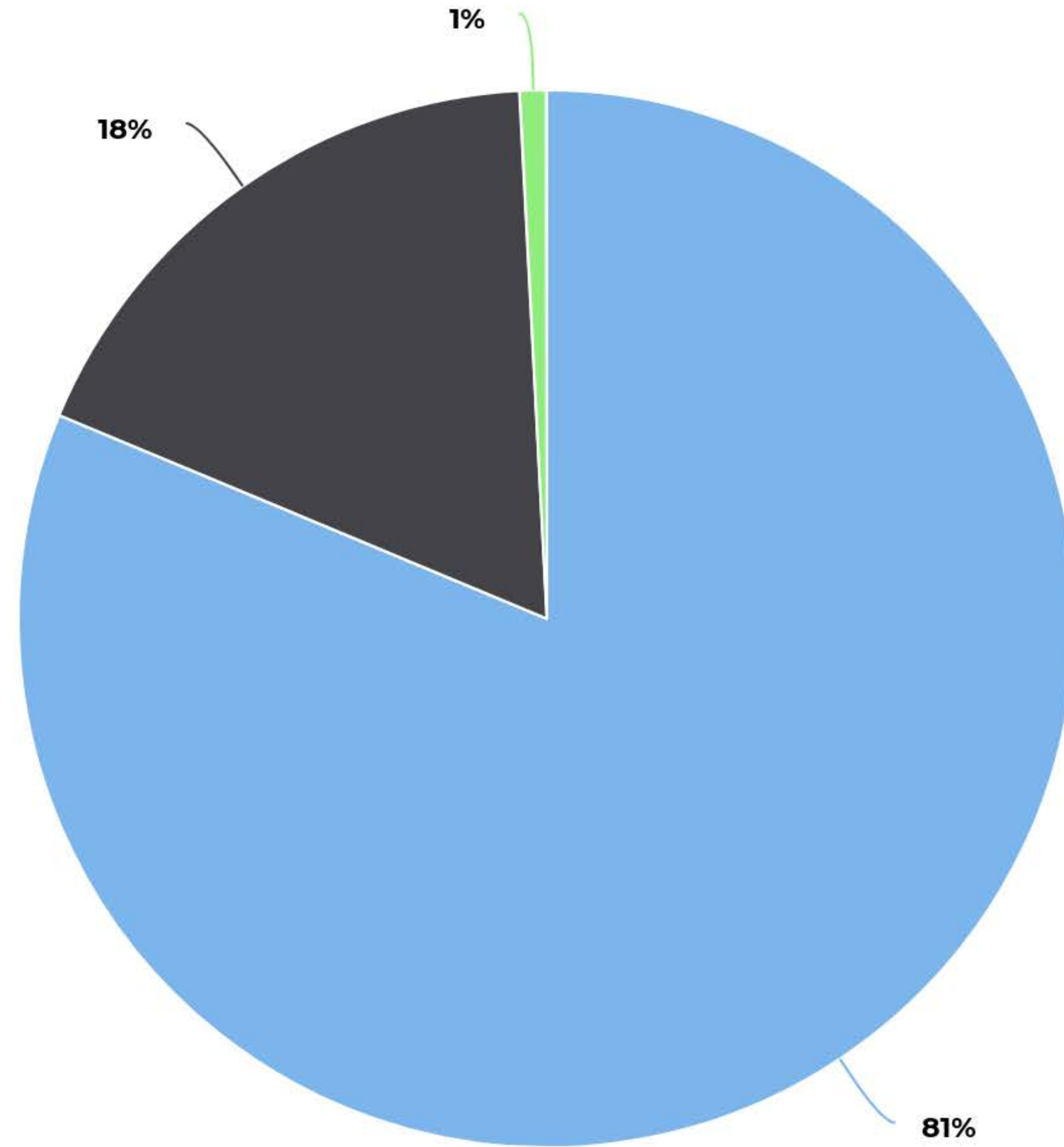


  **ALHAMBRA CREEK STAGING Pedestrian**
  **ALHAMBRA CREEK STAGING Horse rider**

  **ALHAMBRA CREEK STAGING Cyclist**

Distribution by User Type

July 17, 2023 → January 17, 2024



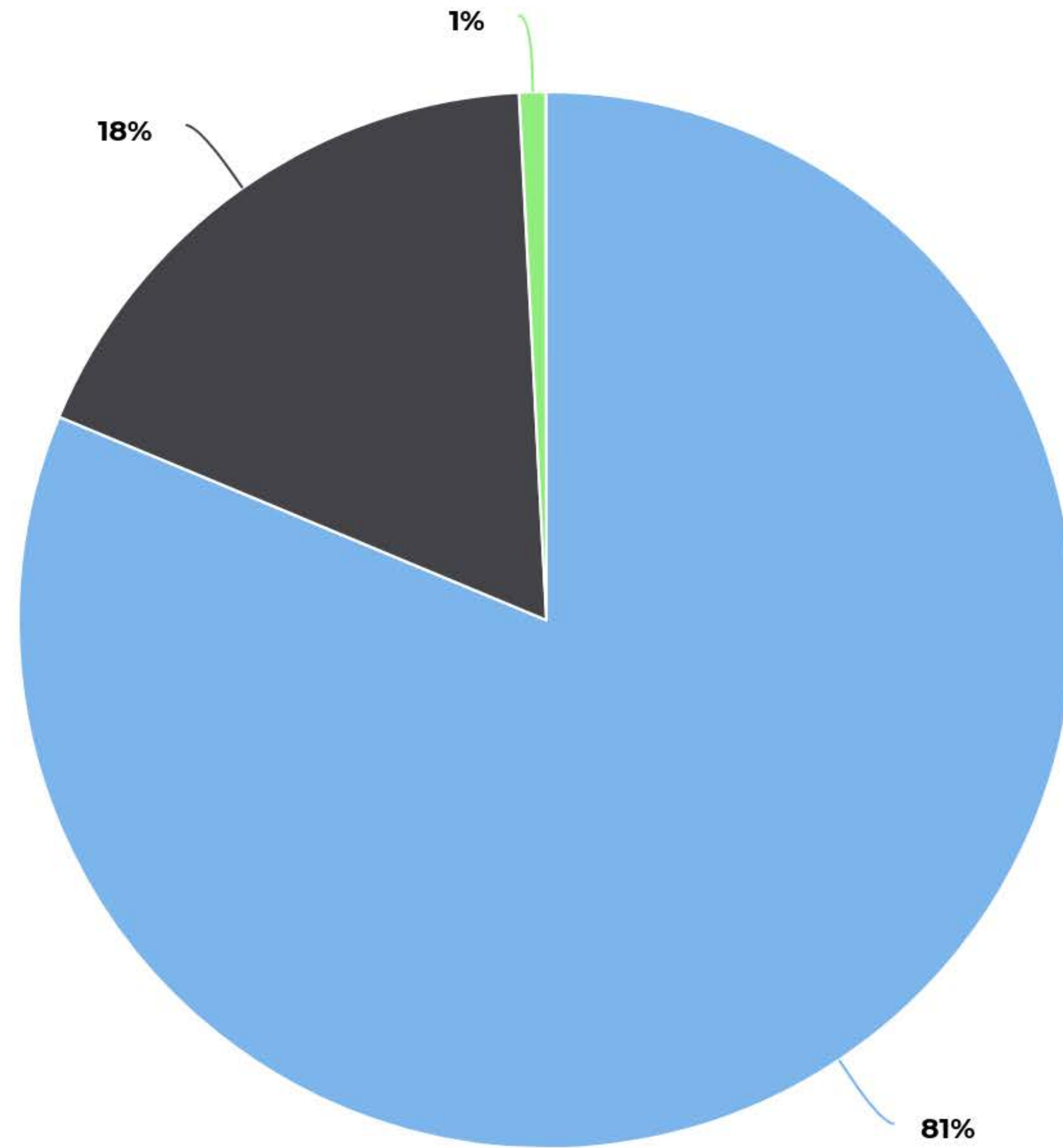
  OLD BRIONES STAGING Pedestrian

  OLD BRIONES STAGING Cyclist

  OLD BRIONES STAGING Horse rider

Distribution by User Type

July 17, 2023 → January 17, 2024



  OLD BRIONES STAGING Pedestrian

  OLD BRIONES STAGING Cyclist

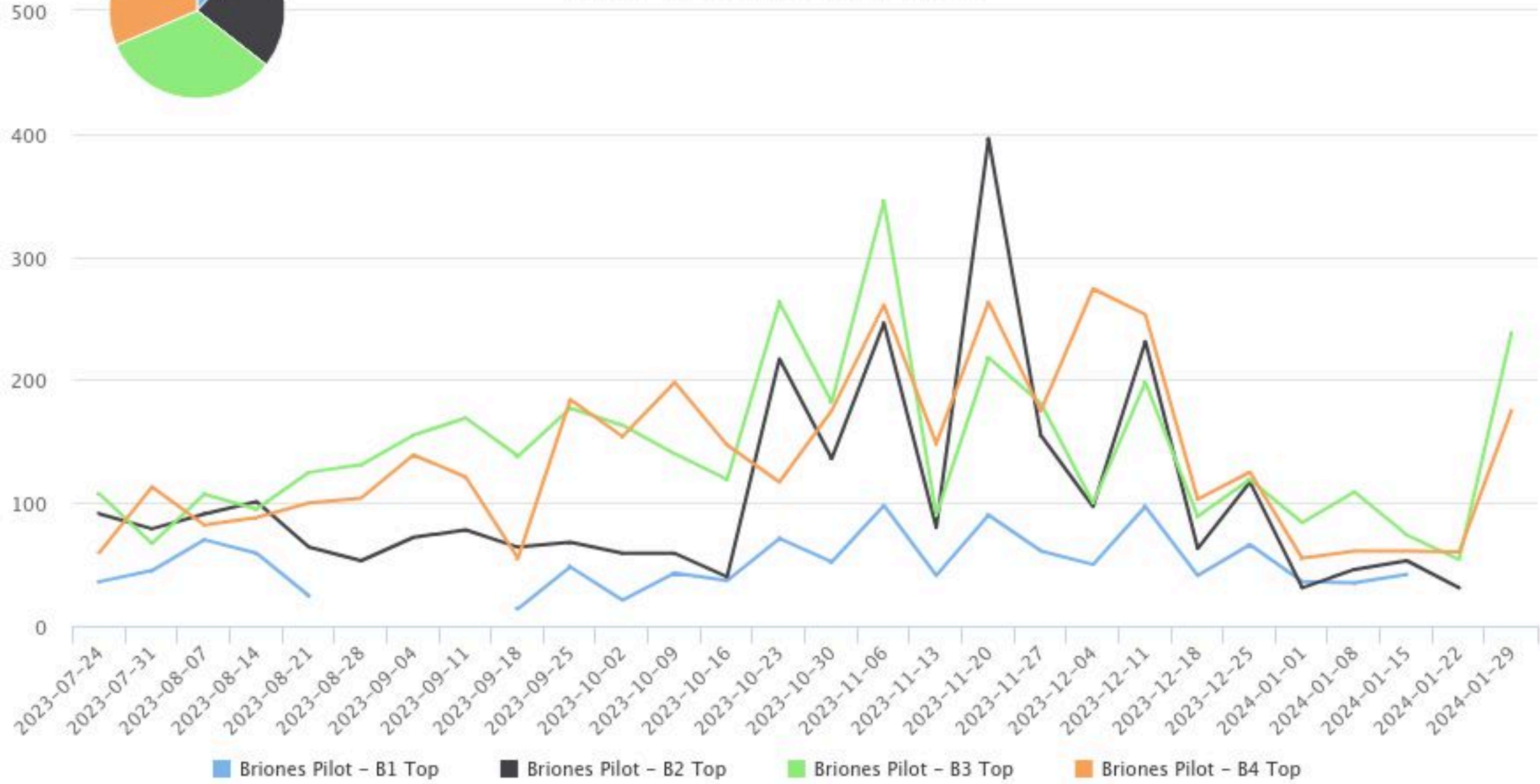
  OLD BRIONES STAGING Horse rider

Avg



Weekly* totals

2023-07-24 to 2024-02-04 (28 weeks)



Avg

Daily totals

2023-08-04 to 2024-01-30 (180 days)

120

100

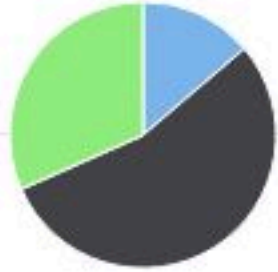
80

60

40

20

0



2023-09

2023-10

2023-11

2023-12

2024-01

■ Briones Pilot - PB6 Top

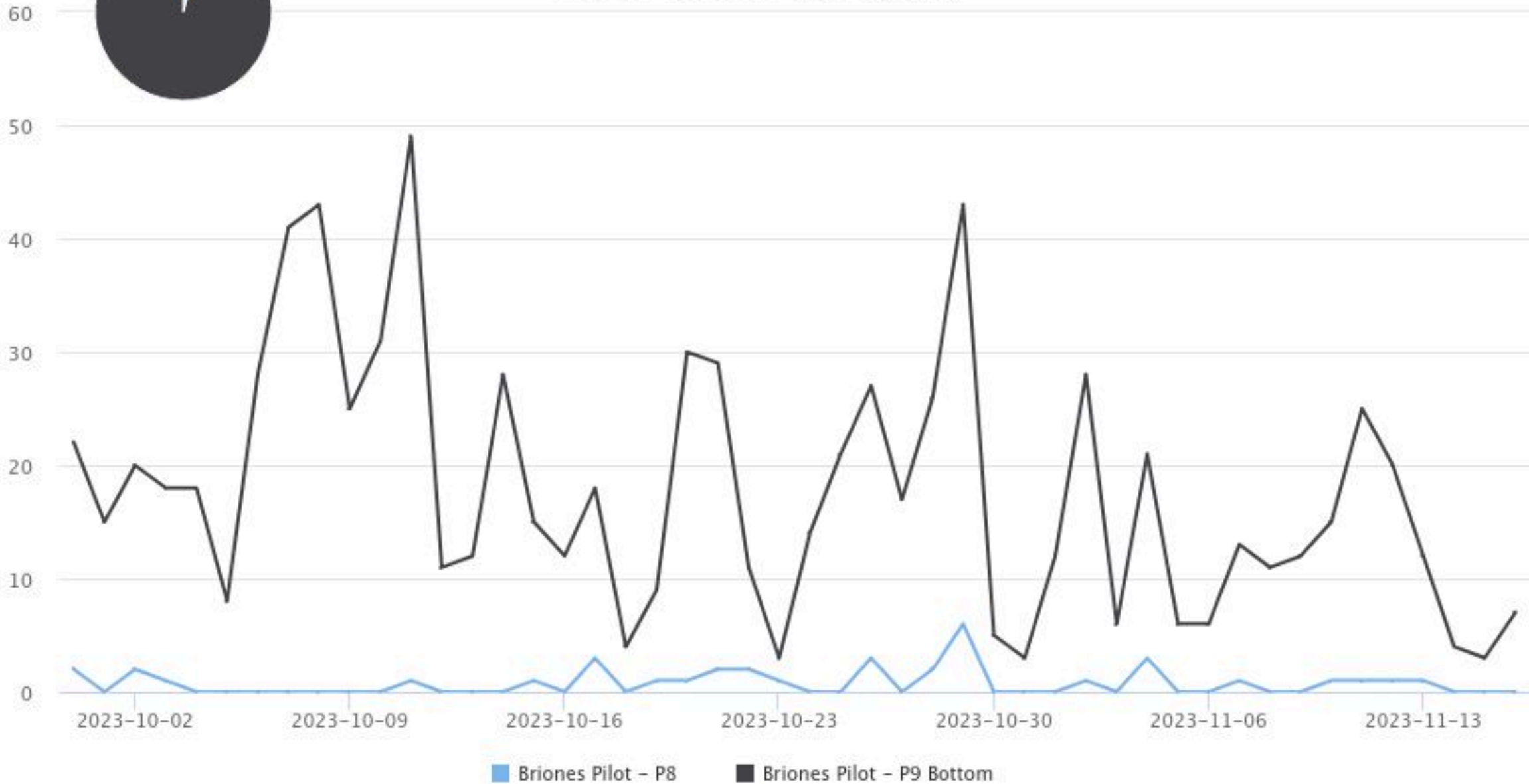
■ Briones Pilot - PB7NW

■ Briones Pilot - PB7SE

Daily totals

2023-09-30 to 2023-11-16 (48 days)

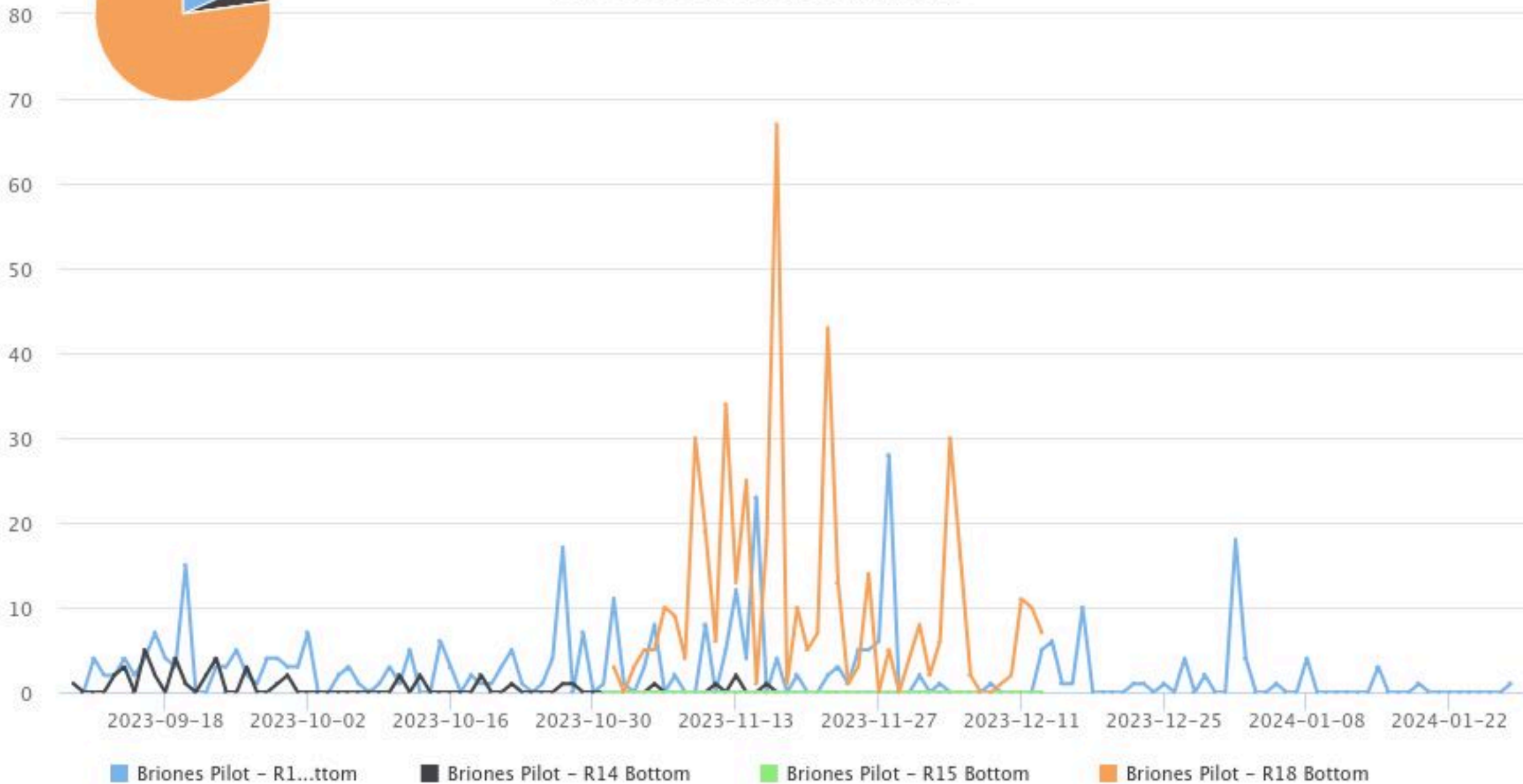
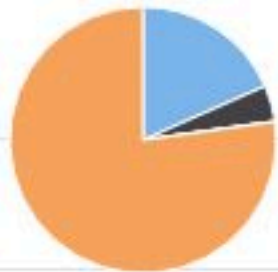
Avg

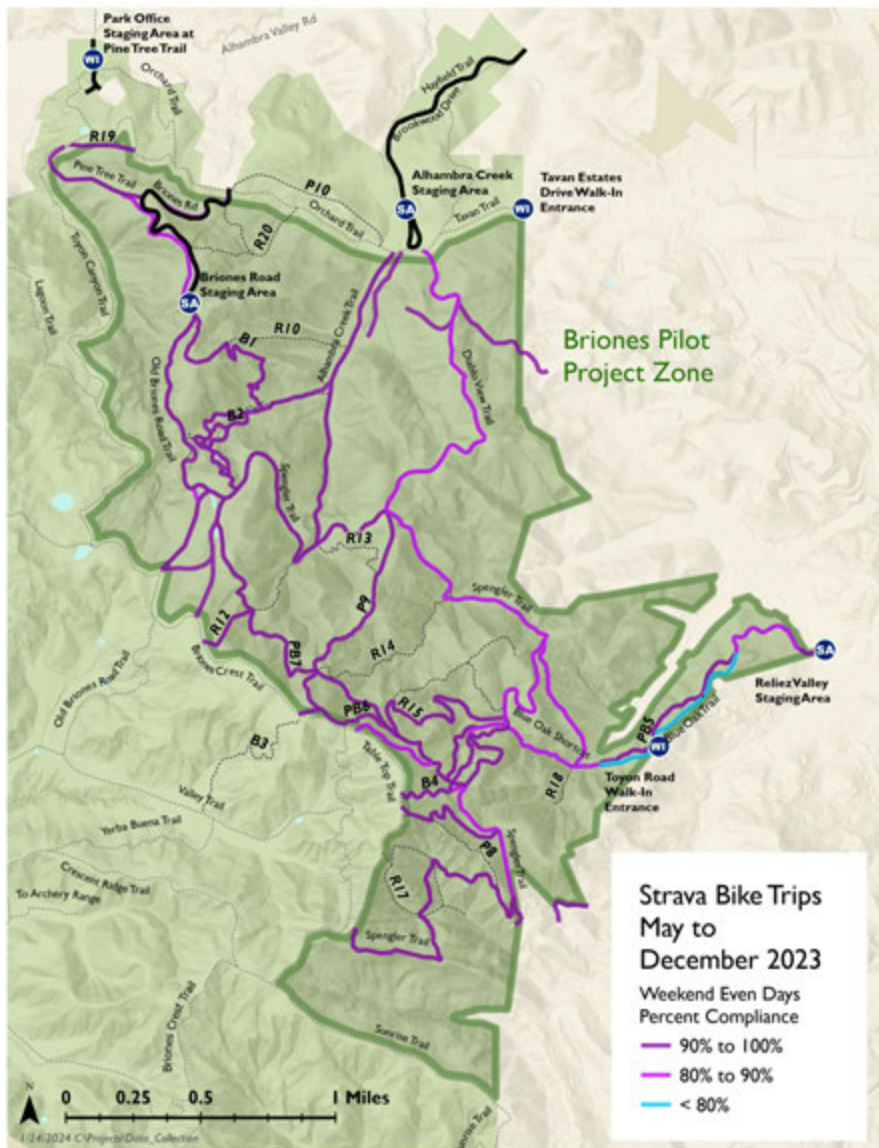


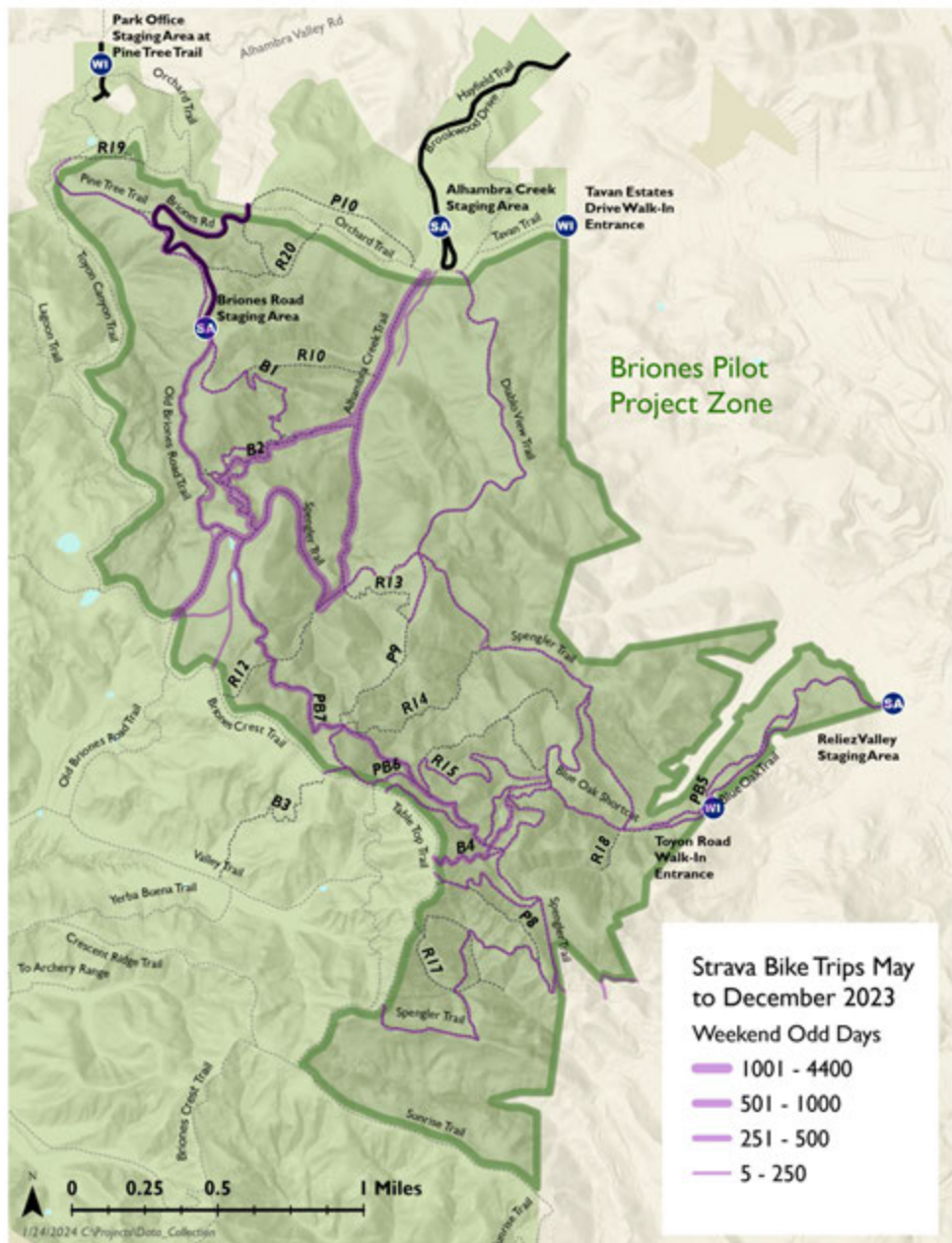
Daily totals

2023-09-09 to 2024-01-28 (142 days)

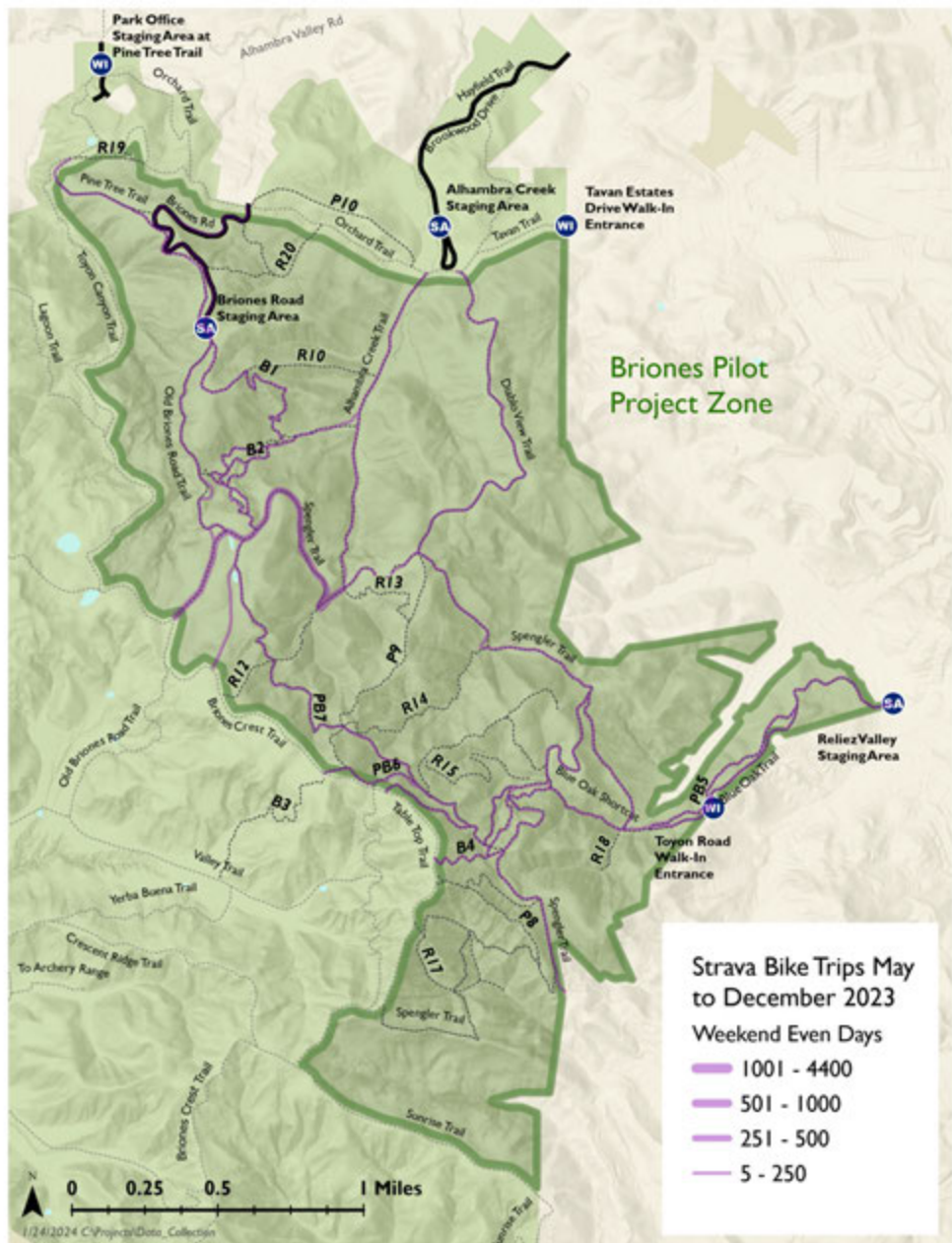
Avg

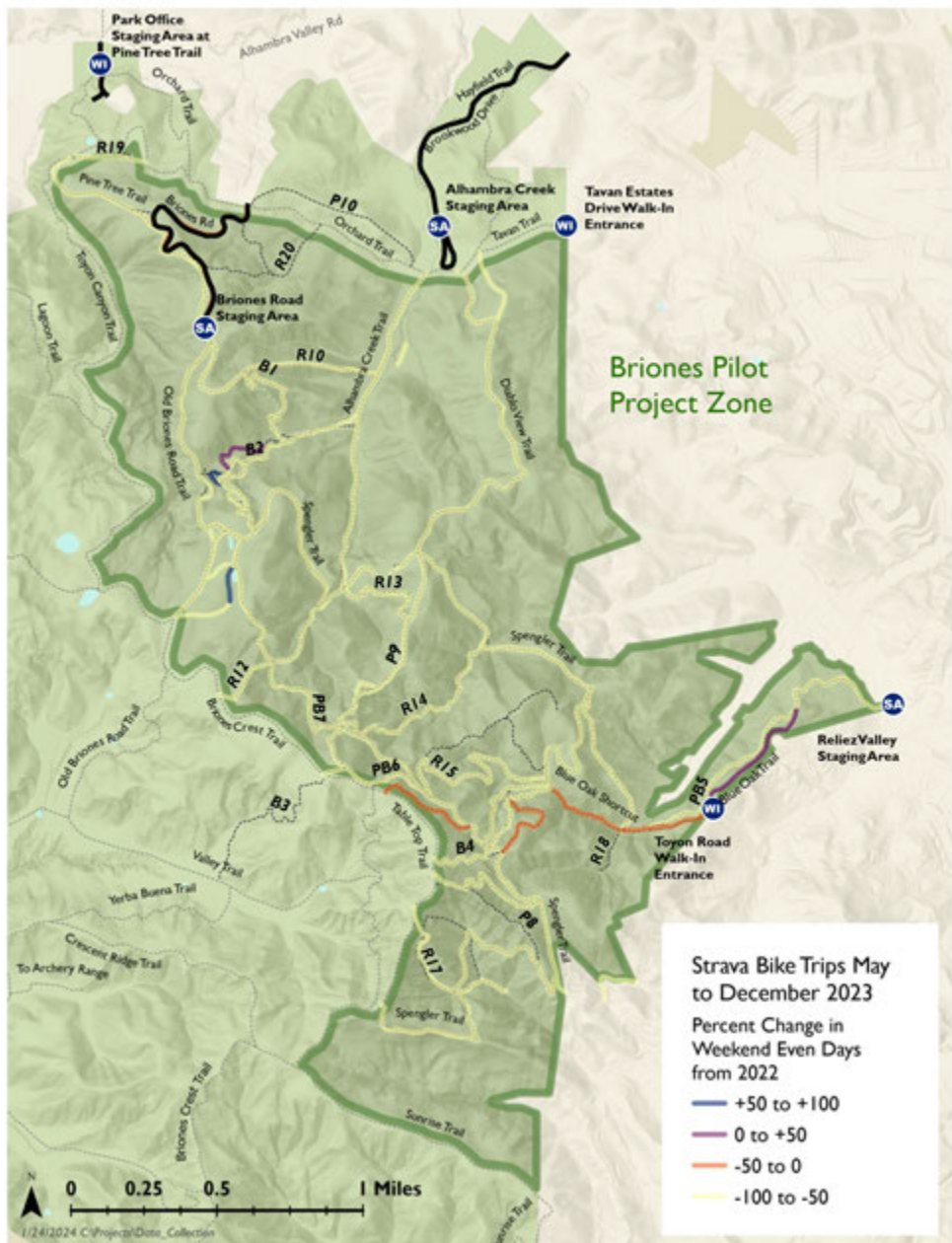








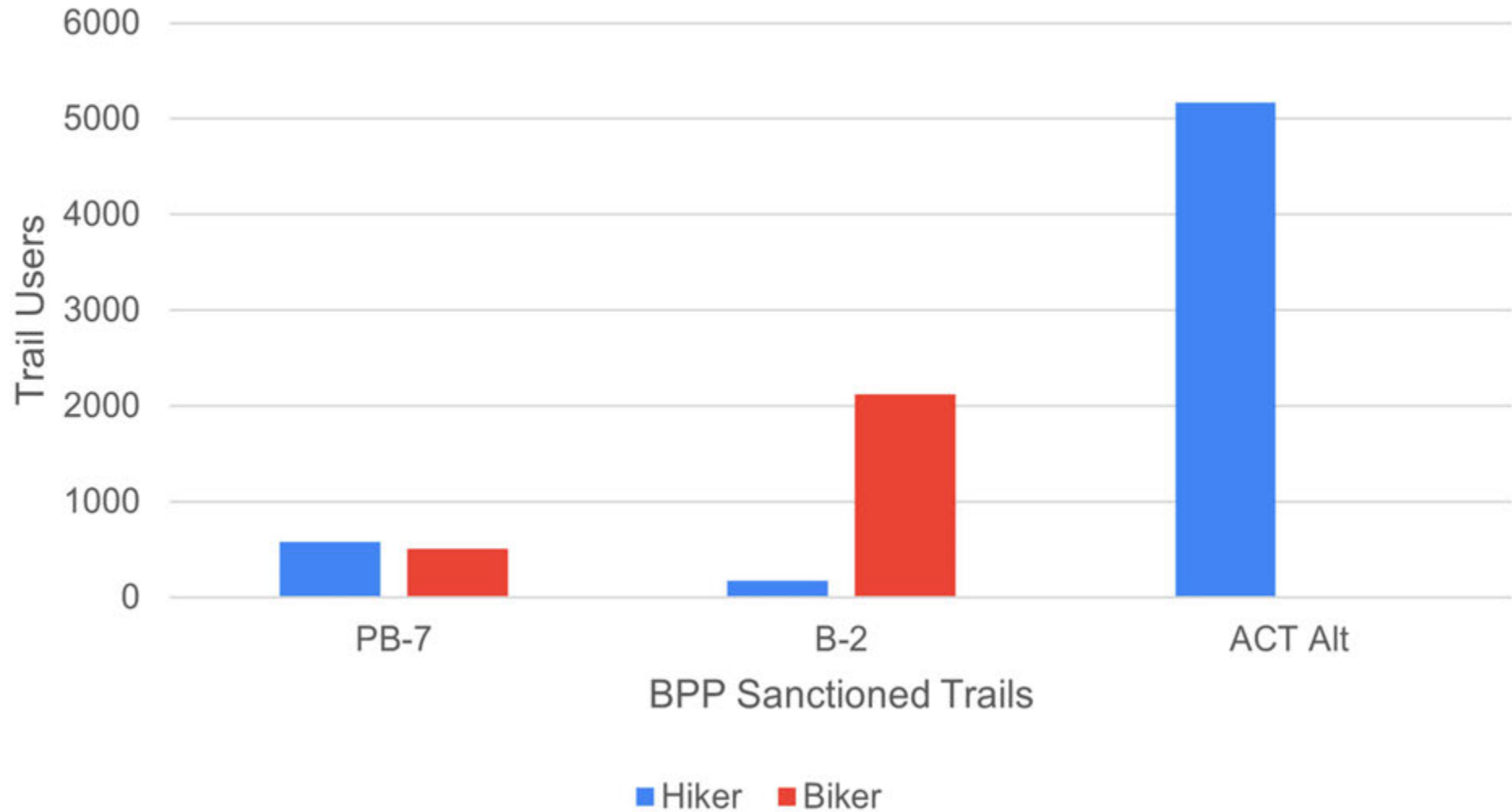




Compliance on Even Days

	2023												
Name	Jan	Feb	Mar	Apr	May	Jun	Jul	Aug	Sep	Oct	Nov	Dec	May - Dec
Alhambra Creek Trail	76%	87%	79%	89%	96%	93%	97%	95%	96%	96%	98%	98%	96%
Blue Oak Shortcut	50%	80%	50%	91%	93%	88%	85%	82%	94%	92%	96%	85%	90%
Blue Oak Trail	50%	80%	33%	92%	91%	95%	83%	82%	89%	87%	97%	89%	90%
Briones Road	63%	86%	71%	77%	91%	93%	86%	93%	87%	87%	90%	94%	90%
Diablo View Trail		50%		100%	100%	50%	100%	67%	100%	75%	100%		86%
Old Briones Road Trail	76%	81%	85%	85%	95%	92%	93%	94%	93%	94%	95%	95%	94%
Pine Tree Trail	50%	100%	100%	80%	100%	80%	100%	100%	100%	100%	80%	100%	96%
Spengler Trail	74%	86%	77%	88%	96%	93%	96%	94%	93%	96%	97%	96%	95%
Table Top	0%	75%		77%	88%	90%	81%	83%	95%	91%	93%	87%	89%
B1	50%	80%	100%	100%	89%	100%	100%	100%	100%	100%	100%	100%	99%
B2	78%	89%	64%	94%	96%	95%	96%	95%	96%	94%	98%	99%	96%
B4	100%	80%	50%	93%	89%	94%	93%	80%	100%	93%	97%	85%	92%
P8					100%	100%							
P9	100%	0%	0%	100%			100%		100%				100%
P19		100%			100%						100%	100%	100%
PB5		100%	100%	83%	90%	100%	100%	75%	100%	91%	94%	89%	92%
PB6	100%	100%		82%	100%	100%	100%	100%	100%	75%	100%	100%	98%
PB7	100%	83%	100%	86%	94%	95%	97%	100%	96%	97%	95%	100%	97%

Bike & Pedestrian Usage (10/30/23-1/17/24)



Restored Trail Usage (7/17/23 - 1/17/24)

