

APPENDIX 5

Summary of Stakeholder Engagement, WRT



**SAN FRANCISCO BAY TRAIL RISK ASSESSMENT & ADAPTATION
PRIORITIZATION PLAN (RAAPP)
Summary of Stakeholder Engagement**

**Prepared by WRT
April 2021**

The overall approach to stakeholder engagement throughout the SF Bay Trail Risk Assessment & Prioritization Plan (RAAPP) process was focused on ensuring that the East Bay Regional Park District (Park District) and their partners were able to open a dialogue around the future impacts of sea level rise across East Bay communities. The Bay Trail is managed by many different landowners and agencies in addition to the Park District. The complex landscape surrounding the Bay Trail along the East Bay shoreline requires a holistic approach to community resilience. Many partnerships will be critical to ensuring the future success of the Bay Trail and all its associated benefits for the region.

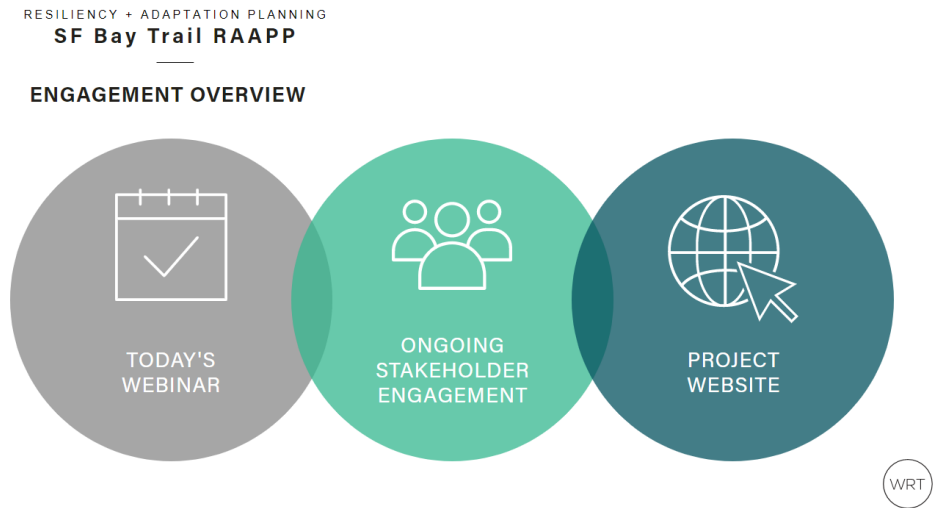


Figure 1: Stakeholder Engagement Overview

The COVID-19 pandemic was an unforeseen complication in the stakeholder engagement process for the project. However, through a series of webinars and



web tools, the Park District and planning team were able to connect with the broader community and key stakeholder agencies at various key milestones in the project.

The main tool for communication was through the Park District website: <https://www.ebparks.org/about/planning/sfbaytrailraapp/>. Within the website, visitors are able to sign up for updates, sign up for webinars, view webinars after they were recorded, review more in-depth analysis via a StoryMap, where visitors could also leave comments and questions, and finally, a copy of the final document is available for review and download.

The community-wide webinars took place in two different settings. The first was hosted by the East Bay Regional Park District via Zoom on October 7, 2020. The second was hosted by Greenbelt Alliance on October 29, 2020. Both meetings present key findings from the study and included conversations across the speaker panel and the community about the key goals and values of the study.

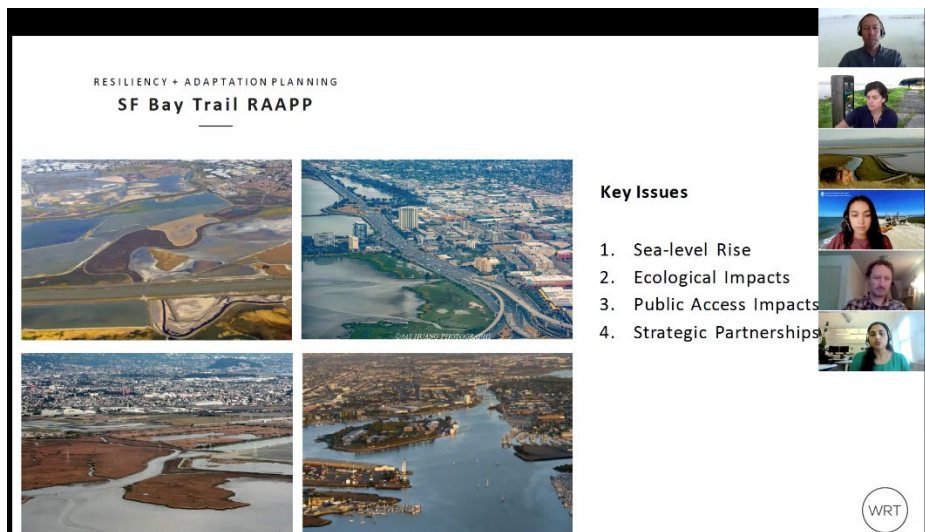


Figure 2: Snapshot from the first webinar

In addition to the engagement provided to the broader community, the Park District and team hosted meetings with key stakeholders and potential future



partners. The stakeholder meetings included City and County officials, representatives from Caltrans, regulatory agencies like BCDC, and others. These were focused on the prototype sites identified as part of the plan which included Alameda Point, McLaughlin Eastshore State Park, and the Martin Luther King Jr. Shoreline.