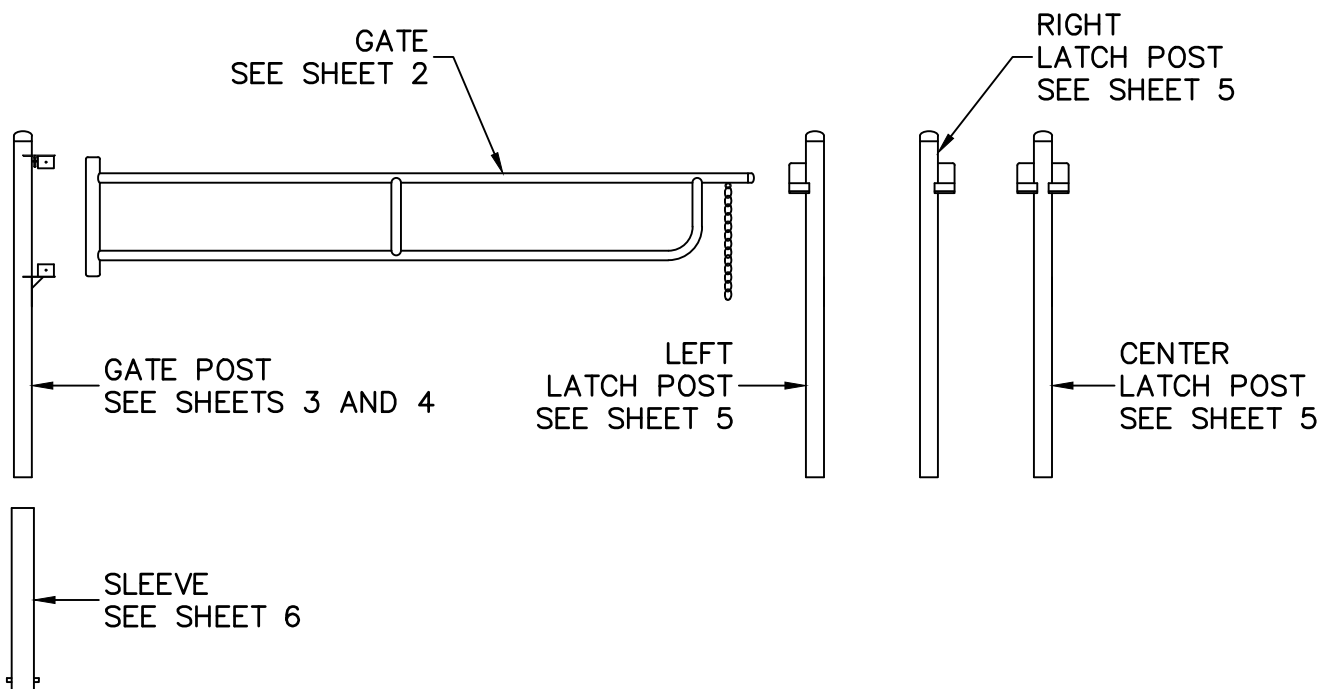


MATERIALS

1. PIPE SHALL BE ASTM 53, GRADE B, UNFINISHED STEEL.
2. STEEL ANGLE, PLATE, AND BAR SHALL BE ASTM A36.
3. PIPE CAPS SHALL BE SCHEDULE 40 (STANDARD WEIGHT), BUTT WELD TYPE, WITH BEVELED EDGE.
4. FASTENERS SHALL BE HOT-DIP GALVANIZED PER ASTM A153.

WORKMANSHIP

5. WELDERS TO BE AWS CERTIFIED AND PREQUALIFIED FOR THE WELDING TO BE PERFORMED.
6. WELDS TO BE REASONABLY SMOOTH AND UNIFORM WITH SPATTER REMOVED, EXCEPT AT PIPE CAPS WHERE WELDS SHALL BE GROUND FLUSH AND SMOOTH.
7. PRIOR TO GALVANIZING, REMOVE ALL SHARP CORNERS AND REMOVE ALL BURRS FROM DRILLED AND CUT PIECES. SMOOTH SHARP EDGES PRIOR TO GALVANIZING AND AGAIN PRIOR TO APPLYING FINISH COATS.
8. ALL STEEL SHALL BE HOT-DIP GALVANIZED AFTER FABRICATION IN ACCORDANCE WITH ASTM A123. WATER QUENCHING FOR CHROMATE CONVERSION COATING SHOULD BE AVOIDED AS THESE PROCESSES INTERFERE WITH PAINT ADHESION AND SURFACE PREPARATION. REFER TO ASTM D6386, STANDARD PRACTICE FOR PREPARATION OF ZINC (HOT-DIP GALVANIZED) COATED IRON AND STEEL PRODUCT FOR PAINTING.
9. AFTER GALVANIZATION AND PRIOR TO SHIPPING, FABRICATOR SHALL CHECK THAT THE GATE ROTATES FREELY IN THE GATE POST BOTTOM CUP WITH THE TOP CUP BOLTED IN PLACE. TO ASSURE FREE ROTATION, GALVANIZING THICKNESS AT THESE MATING PARTS SHALL BE HELD TO A MINIMUM AND/OR EXCESS GALVANIZING MAY BE GROUND OFF.
10. INSTALL ZINC PLUGS IN ANY VISIBLE AIR VENT HOLES USED IN GALVANIZING.
11. EXCEPT WHERE NOTED ON SLEEVE, PRIME AND PAINT ALL STEEL "EBRPD BROWN METAL" PER STD PLAN 003 PAINT SPECIFICATION.



(A) GATE, POSTS, AND SLEEVE



PIPE GATE FABRICATION

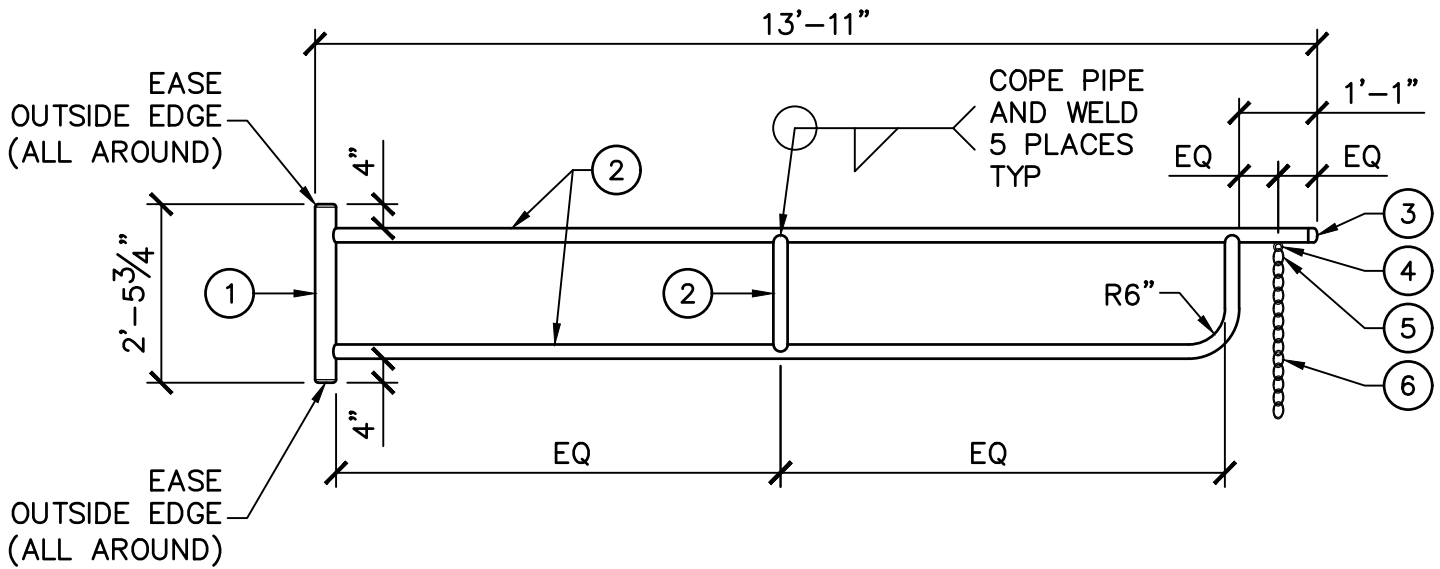
REVIEWED BY THE PARK STANDARDS COMMITTEE, AND APPROVED BY THE CHIEF OF DESIGN & CONSTRUCTION

Signature

04/06/2022

EAST BAY REGIONAL PARK DISTRICT - STANDARD PLANS

STD PLAN
210F
SHEET 1 OF 6
NOT TO SCALE



GATE PARTS					
PART	DESCRIPTION	NOMINAL SIZE	WEIGHT	OUTSIDE DIAMETER	INSIDE DIAMETER
①	PIPE	3"	STANDARD	3.50"	3.07"
②	PIPE	2"	STANDARD	2.38"	2.07"
③	PIPE CAP	2"	STANDARD	2.38"	2.07"
④	3/4" ID FORGED STEEL PAD EYE OR SHOULDER EYEBOLT, FILLET WELD SHOULDER ALL AROUND				
⑤	3/8" HOT-DIP GALVANIZED PEEN TYPE OVAL CONNECTING LINK				
⑥	3/8" REGULAR LINK (1.30" INSIDE LENGTH) x 27" LONG, GRADE 43 HOT-DIP GALVANIZED HIGH-TEST STEEL CHAIN				

ⓑ GATE _____



PIPE GATE FABRICATION

REVIEWED BY THE PARK STANDARDS COMMITTEE, AND APPROVED BY THE CHIEF OF DESIGN & CONSTRUCTION

Signature

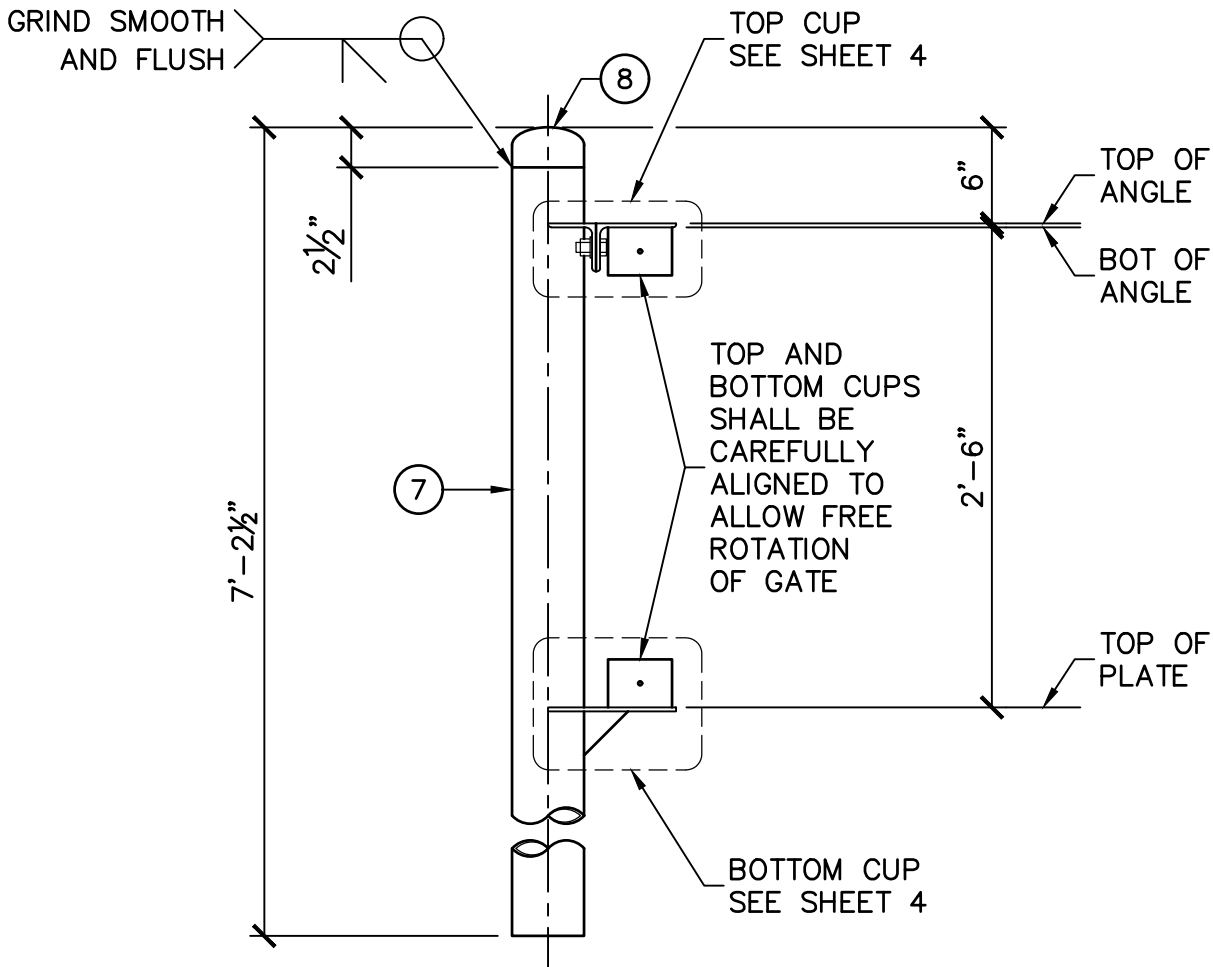
04/06/2022

STD PLAN

210F

SHEET **2** OF **6**

NOT TO SCALE



GATE POST PARTS					
PART	DESCRIPTION	NOMINAL SIZE	WEIGHT	OUTSIDE DIAMETER	INSIDE DIAMETER
⑦	PIPE	4"	STANDARD	4.50"	4.03"
⑧	PIPE CAP	4"	STANDARD	4.50"	4.03"
FOR CONTINUATION OF GATE POST MATERIALS, SEE TOP AND BOTTOM CUPS ON SHEET 4.					

③ GATE POST



PIPE GATE FABRICATION

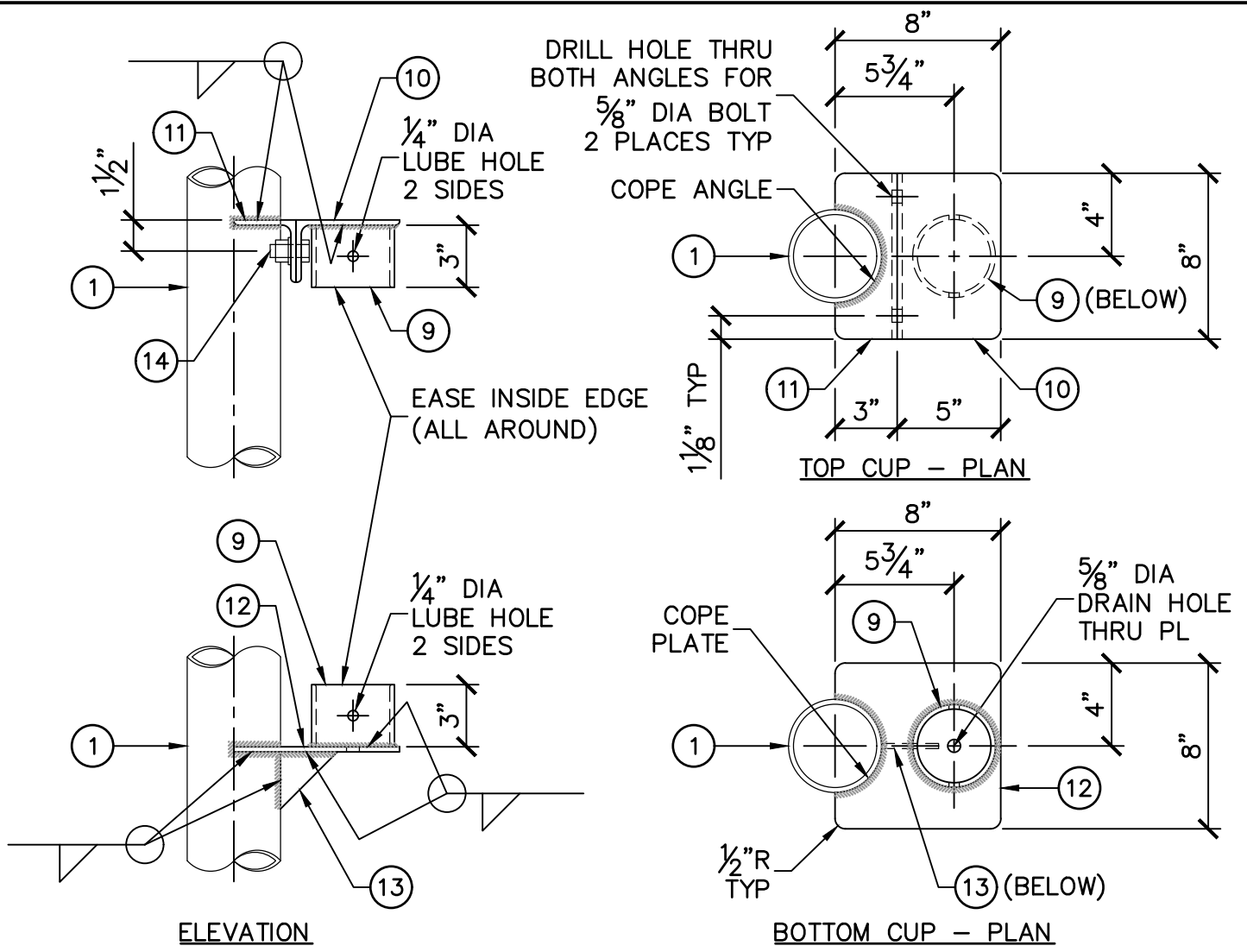
REVIEWED BY THE PARK STANDARDS COMMITTEE, AND APPROVED BY THE CHIEF OF DESIGN & CONSTRUCTION

Signature

04/06/2022

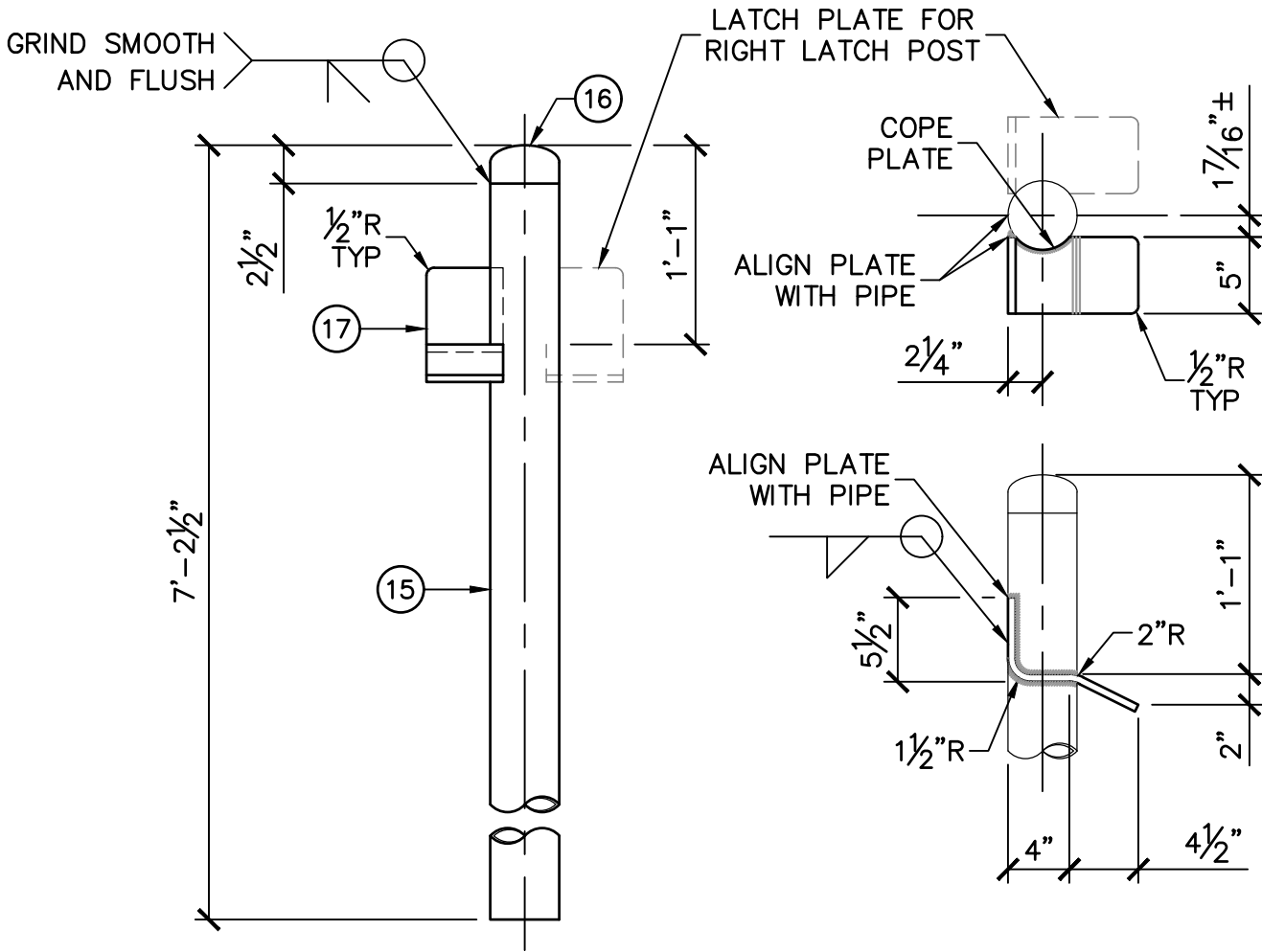
EAST BAY REGIONAL PARK DISTRICT - STANDARD PLANS

STD PLAN
210F
SHEET 3 OF 6
NOT TO SCALE



TOP AND BOTTOM CUP PARTS					
PART	DESCRIPTION	NOMINAL SIZE	WEIGHT	OUTSIDE DIAMETER	INSIDE DIAMETER
9	PIPE	3 1/2"	STANDARD	4.00"	3.55"
10	L5 x 3 x 1/4 x 0'-8" LONG				
11	L3 x 3 x 1/4 x 0'-8" LONG				
12	SQUARE PL 1/4 x 8 x 8				
13	TRIANGULAR GUSSET PL 1/4 x 2 3/4 x 2 3/4				
14	HDG A325 STRUCTURAL BOLT 5/8-11 x 1 1/2 LONG WITH HEAVY HEX NUT AND WASHER, TOTAL 2				

D GATE POST DETAILS



NOTES

1. LEFT LATCH POST SHOWN, RIGHT LATCH POST SIMILAR.
2. CENTER LATCH POST SIMILAR WITH TWO BENT PLATES (ONE EACH SIDE). THE STANDARD CENTER LATCH POST HAS BOTH BENT PLATES FACING THE SAME DIRECTION, AND SOME SITE CONDITIONS MAY REQUIRE A CUSTOM CENTER LATCH POST WITH PLATES FACING OPPOSITE DIRECTIONS.

LATCH POST PARTS					
PART	DESCRIPTION	NOMINAL SIZE	WEIGHT	OUTSIDE DIAMETER	INSIDE DIAMETER
15	PIPE	4"	STANDARD	4.50"	4.03"
16	PIPE CAP	4"	STANDARD	4.50	4.03
17	BENT PL 1/2				

E LATCH POSTS



PIPE GATE FABRICATION

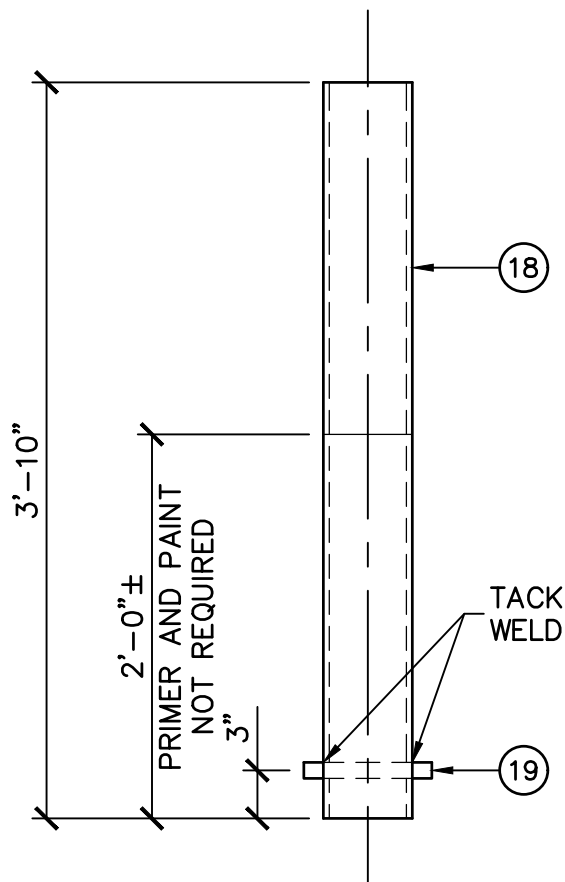
REVIEWED BY THE PARK STANDARDS COMMITTEE, AND APPROVED BY THE CHIEF OF DESIGN & CONSTRUCTION

Signature

04/06/2022

EAST BAY REGIONAL PARK DISTRICT - STANDARD PLANS

STD PLAN
210F
SHEET **5** OF **6**
NOT TO SCALE



SLEEVE PARTS					
PART	DESCRIPTION	NOMINAL SIZE	WEIGHT	OUTSIDE DIAMETER	INSIDE DIAMETER
18	PIPE	5"	EXTRA STRONG	5.56"	4.81"
19	1" DIA X 0'-8" LONG STEEL BAR				

F SLEEVE



PIPE GATE FABRICATION

REVIEWED BY THE PARK STANDARDS COMMITTEE, AND APPROVED BY THE CHIEF OF DESIGN & CONSTRUCTION

Signature

04/06/2022

EAST BAY REGIONAL PARK DISTRICT - STANDARD PLANS

STD PLAN

210F

SHEET **6** OF **6**

NOT TO SCALE