

# Fuels Treatment Overview

## Recommended Treatment Area TI004

### Tilden Regional Park

Background: In 2010, the East Bay Regional Park District’s Board of Directors approved the *Wildfire Hazard Reduction and Resource Management Plan* (“Plan”) and the accompanying CEQA (California Environmental Quality Act) document which covers hill and shoreline parklands from Richmond to Castro Valley within the Measure CC (Measure FF) funded area. The approved Plan is an integral component of the Park District’s Safe and Healthy Forests initiative for wildfire protection. This project covers Recommended Treatment Area (RTA) TI004 and is funded by a direct allocation of state funding through CAL Recycle to address forest conditions in Tilden and Anthony Chabot, called the “Climate Change Impact Hazardous Wildland Fuels Reduction Project.”

Why: The purpose of this project is to establish a zone of natural habitat that is resistant to wildfires, more accessible for firefighters, and less fire-prone. Hazardous wildland vegetation will be reduced in the wildland-urban interface. Trees and other vegetation will be thinned out or removed on Park District property with a focus on drought-killed or declining conifers that were planted 50-80 years ago. This project will reduce the likelihood of torching trees or crown fires. Healthy native oak and bay trees will be preserved and pruned. For this location, all material from cut trees and limbs will be completely removed. The work is prescribed by FEMA and fully permitted by State and Federal environmental regulatory agencies. Homeowners should continue to clear vegetation on their own property and take appropriate measures to protect their homes against wildfire.

Who: The Park District’s Fire Department is managing the project. Various crews and contractors will be performing the initial work and ongoing maintenance. Contractor will be using heavy equipment and chippers. The Park District’s Stewardship Department and consulting biologists will be closely monitoring to ensure appropriate resource protection. The Park District’s survey department may be surveying and marking some of the property boundaries to help us make sure we perform work on District lands.

When: A tree contractor will perform tree removals and pruning in September 2023. The Park District and its contractors will minimize the impact to park users by restricting work hours

to weekdays (7:30 am to 5:30 pm) and temporarily redirecting trail use, if necessary. Equipment and crews will be operating during the project.

Additional

Information: More information about the Park District’s Wildfire Hazard Reduction and Resource Management Plan and specific maps and reports can be found at:

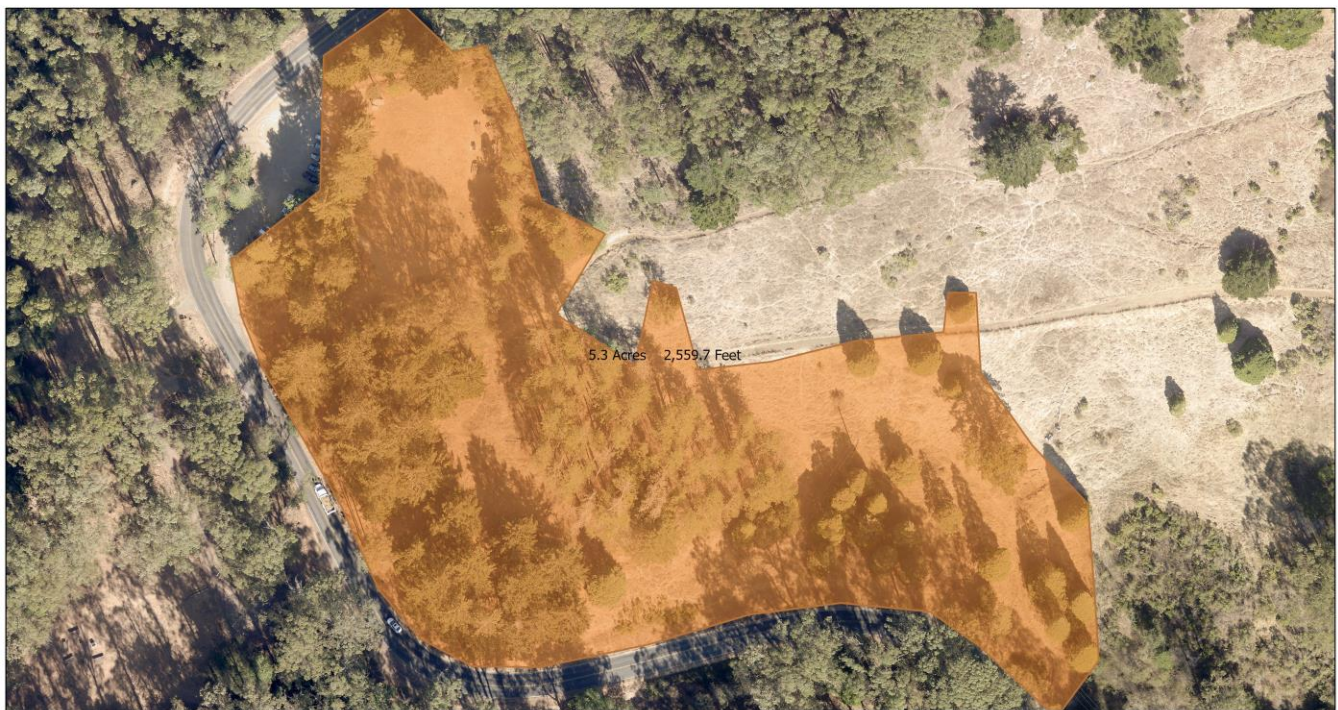
<https://www.ebparks.org/resource-managment/wildfire-resilience>

Updates to the current fuels management projects can be found by scrolling down the appropriate Recommended Treatment Area at:

<https://www.ebparks.org/public-safety/fire/fuels-management/update>

Site Maps:

ti004 Quarry project



7/26/2023, 10:22:42 AM

EBRPD Parklands Merged

1:1,128  
0 0.01 0.02 0.04 mi  
0 0.02 0.04 0.07 km



Planted conifer stands with over 80% mortality from drought and disease

