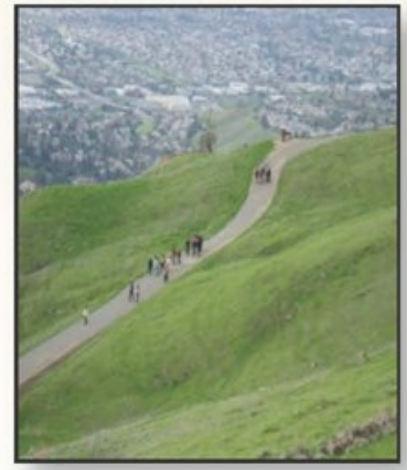
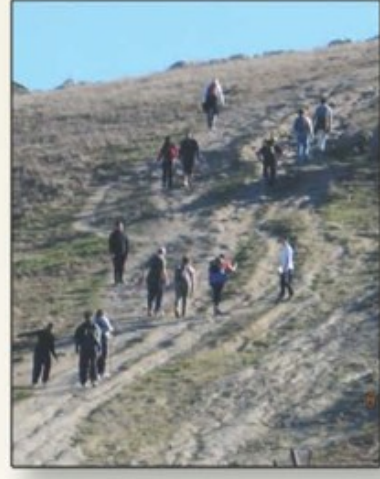


Trail Restoration

Preserving the Beauty of Mission Peak

Mission Peak Needs Your Help!

Off-trail **shortcuts** cause **erosion** that damages the fragile ecosystem and creates dangerous and ugly scars in the landscape.



Park trails are designed for **safety** and **erosion control**.

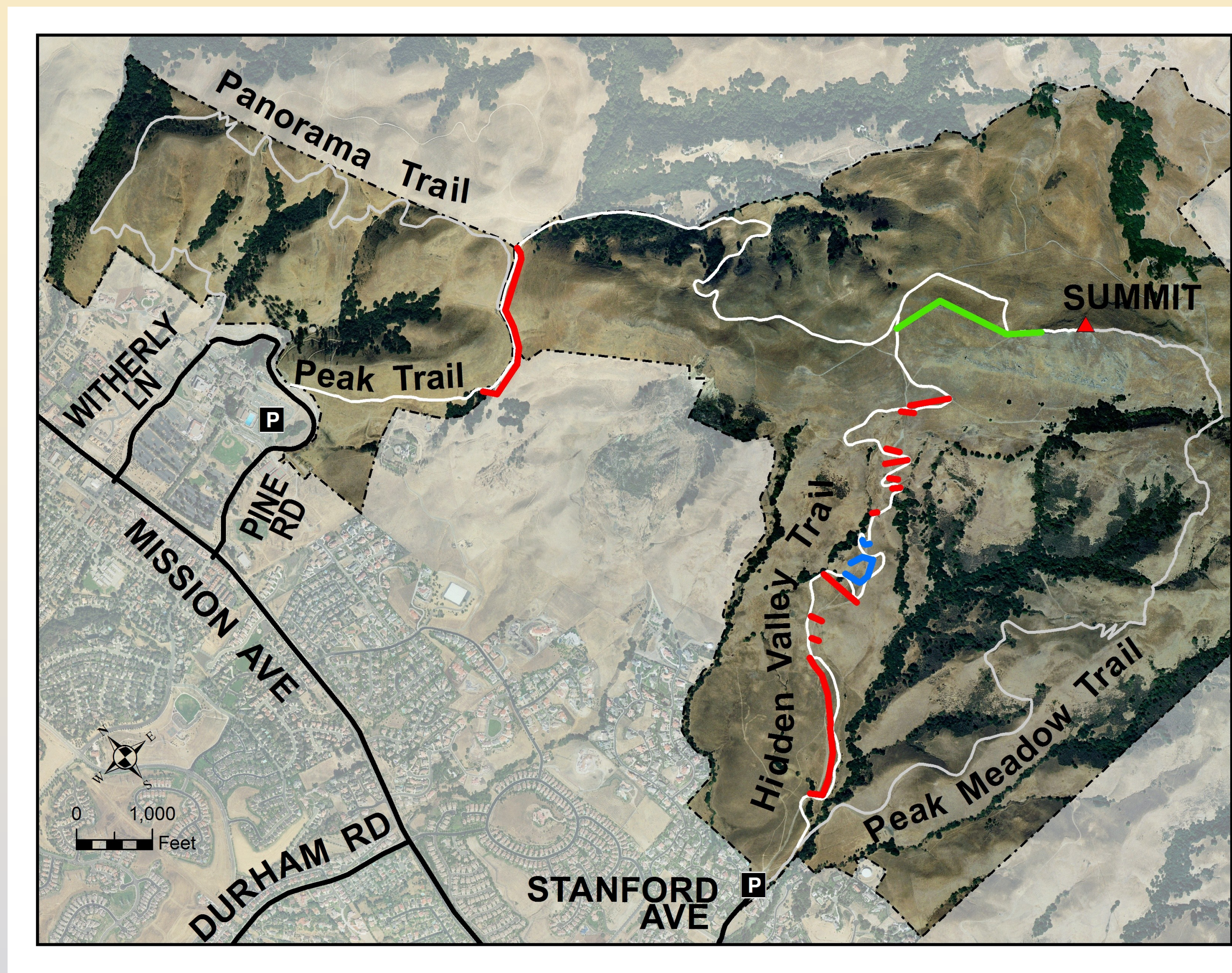
Please use the official trail and do your part to protect your park.

If you would like to help with Mission Peak restoration projects, contact 510-544-3247 or sunol@ebparks.org

EAST BAY REGIONAL PARK DISTRICT

Since the Fall of 2012, District staff has been working with volunteers to restore “bootleg” trails. Bootleg trails cause erosion and scars the landscape. Trail restoration treatment includes:

- ◆ Jute Netting
- ◆ Eco-Wattles
- ◆ Seeding
- ◆ Signage
- ◆ Fencing
- ◆ Mother Nature



BLUE = 2012 Restoration

RED = 2013 Restoration

GREEN = 2014 Restoration

A Restoration Story...



The “Belly-Button”



Before treatment



After treatment



Taking root!

Irvington High School Student volunteers installing jute net blankets to stabilize the slope



Trail Restoration

Efforts are underway to repair **EROSION DAMAGE** caused by off-trail shortcuts

Erosion damage caused by off-trail shortcuts

Please help keep Mission Peak beautiful-do not take shortcuts -hike only on developed trails!

East Bay Regional Park District



How Can You Help?

- ◆ Stay on designated trails
- ◆ Avoid entering restoration areas
- ◆ Avoid creating new “bootleg” trails

Thank you! Your cooperation is appreciated!!!