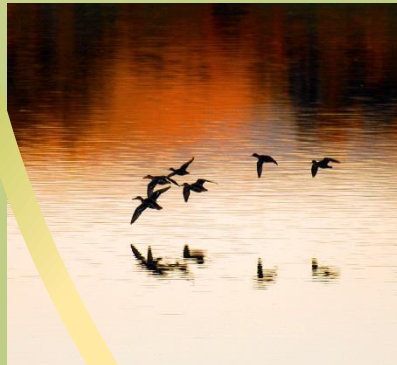




# Measure CC Public Meeting

WELCOME!

East Bay   
Regional Park District  
*Healthy Parks Healthy People*



# ABOUT MEASURE CC

Measure CC was passed by Oakland, Berkeley, Richmond, Alameda, San Pablo, El Cerrito, Albany, Emeryville, and Piedmont in 2004 with **72% support** to provide local funding for park infrastructure, maintenance, safety, and services. Measure CC is a **\$12/year parcel tax**. Measure CC is set to expire soon. Measure CC has provided over **\$37.4 million** over the past 13 years for park improvement and services in the Measure CC area.

## Goals, Projects and Services

- Public Safety, Wildfire Prevention, and Healthy Forest
- Park Infrastructure and Maintenance
- Environmental Stewardship and Habitat Protection



Measure CC Public Meeting



# Measure CC Accomplishments

Video Presentation

<https://youtu.be/dq60gLBFSStU>



Measure CC Public Meeting

East Bay   
Regional Park District

*Healthy Parks Healthy People*

# Measure CC Accomplishments



MEASURE CC COMMITMENTS MADE, IMPROVEMENTS DELIVERED

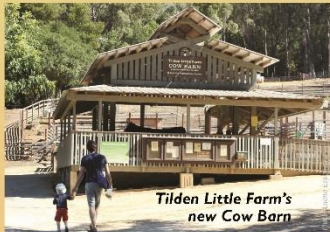
## Tilden Regional Park Tilden Little Farm and Environmental Education Center Berkeley

### Project Facts:

- Tilden Nature Area is a 740-acre preserve located just north of Tilden Regional Park
- Over 100,000 people visit Tilden Regional Park's Little Farm and Environmental Education Center every year
- New hand-washing stations, bathrooms, and picnic tables at the Little Farm
- Updated infrastructure including sewer, drainage, farm building roofs, and electrical service

### Service Enhancements and Infrastructure Upgrades

Thanks to the community's support, many area coastlines, hillsides, and parks like those in Tilden have been upgraded to improve services, safety, and enhance public access. Improvements include new bathrooms, new picnic tables, farm building retrofitting, updated electrical service to the Little Farm, and sewer infrastructure, among others.



Tilden Little Farm's  
new Cow Barn



Children enjoy feeding the  
animals at the Little Farm



In 2004, East Bay voters in the cities of Oakland, Berkeley, Richmond, Alameda, San Pablo, El Cerrito, Albany, Emeryville, and Piedmont approved Measure CC to improve park facilities, protect the environment and open space, enhance public access, and maintain public safety. However, Measure CC is set to expire soon. Learn more online in English, en Español, and in Chinese at [ebparks.org/2004MeasureCC](http://ebparks.org/2004MeasureCC)

2950 Peralta Oaks Court • P.O. Box 5381 • Oakland, CA 94605 • 1-888-EBPARKS • [ebparks.org](http://ebparks.org)



Tilden Nature Area's new handicap accessible restrooms



MEASURE CC COMMITMENTS MADE, IMPROVEMENTS DELIVERED

## Martin Luther King Jr. Regional Shoreline Tidewater Boating Center Oakland

### Measure CC Facts:

- Martin Luther King Jr. Regional Shoreline consists of 741 acres
- Installation of an ADA accessible dock that is a popular launch area for kayakers
- The 12,300-square-foot Tidewater Boathouse complex consists of a boathouse, training area, boat storage facility, Recreation Department offices, and a security residence
- Improved visitor experience with picnic tables, grass meadow, and new trails at East Creek Point Staging Area
- Restored habitat for wildlife, including endangered species like the clapper rail

### Enhanced Access

Improvements include retrofitting the boat ramp at Martin Luther King Jr. Regional Shoreline for disabled access; and visitor services like picnic tables, meadow, and trails at Tidewater Boathouse.

### Habitat Restoration and Climate Change Resiliency

Measure CC has funded marsh cleanup and Clapper Rail habitat enhancement projects at Martin Luther King Jr. Regional Shoreline.



Young kayakers prepare for launch



In 2004, East Bay voters in the cities of Oakland, Berkeley, Richmond, Alameda, San Pablo, El Cerrito, Albany, Emeryville, and Piedmont approved Measure CC to improve park facilities, protect the environment and open space, enhance public access, and maintain public safety. However, Measure CC is set to expire soon. Learn more online in English, en Español, and in Chinese at [ebparks.org/2004MeasureCC](http://ebparks.org/2004MeasureCC)

2950 Peralta Oaks Court • P.O. Box 5381 • Oakland, CA 94605 • 1-888-EBPARKS • [ebparks.org](http://ebparks.org)



Martin Luther King Jr. Regional Shoreline marsh



MEASURE CC COMMITMENTS MADE, IMPROVEMENTS DELIVERED

## McLaughlin Eastshore State Park Berkeley

### Project Facts:

- McLaughlin Eastshore State Park extends 8.5 miles along the East Bay shoreline from the Bay Bridge to Richmond and includes 1,854 acres of uplands and tidelands
- Extended the Bay Trail by 1 mile around Golden Gate Fields at Albany Beach
- Measure CC has funded the grading and site preparation for future construction on the Brickyard Site
- Measure CC supports operations, including police and fire protection and maintenance
- Restoration of grasslands at Berkeley Meadow, including native habitat for burrowing owl

### Enhanced Access

Improvements at the McLaughlin Eastshore State Park include an extension of the Bay Trail around Golden Gate Fields, and initial operations of the new State Park.



An Eastshore burrowing owl

### Habitat Restoration

Existing, voter-approved Measure CC funding has helped restore habitat for endangered species. At McLaughlin Eastshore State Park, this includes habitat for the endangered burrowing owl.



In 2004, East Bay voters in the cities of Oakland, Berkeley, Richmond, Alameda, San Pablo, El Cerrito, Albany, Emeryville, and Piedmont approved Measure CC to improve park facilities, protect the environment and open space, enhance public access, and maintain public safety. However, Measure CC is set to expire soon. Learn more online in English, en Español, and in Chinese at [ebparks.org/2004MeasureCC](http://ebparks.org/2004MeasureCC)

2950 Peralta Oaks Court • P.O. Box 5381 • Oakland, CA 94605 • 1-888-EBPARKS • [ebparks.org](http://ebparks.org)



Brickyard preparation for future public access  
in McLaughlin Eastshore State Park

# Measure CC Accomplishments

**East Bay**  
Regional Park District  
*Healthy Parks Healthy People*

MEASURE CC COMMITMENTS MADE, IMPROVEMENTS DELIVERED

## Wildfire Prevention and Healthy Forests

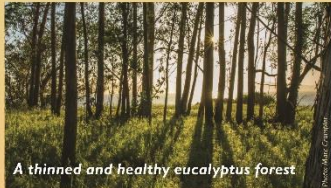
### Measure CC Facts:

- Funding from Measure CC has helped remove flammable and hazardous vegetation on 500 acres of parks and open space, thereby helping to prevent catastrophic fires and maintain safe, healthy forests
- Encompasses long swath of East Bay Hills including the following regional parks: Wildcat, Tilden, Redwood, Sibley, and Roberts
- Manage healthy forests by thinning excessive growth
- Ensuring public safety by reducing fuel load in the East Bay Hills
- Support work of District fire and police staff

### Wildfire Prevention

Wildfires are potentially devastating to our parks, homes, and lives. Existing, voter-approved Measure CC funding has helped remove flammable and hazardous material on approximately 500 acres of parks and open space.

This funding helps prevent catastrophic fires and maintain safe and healthy forests, all while complying with Natural Environmental Protection Act (NEPA) and the California Environmental Quality Act (CEQA).



A thinned and healthy eucalyptus forest



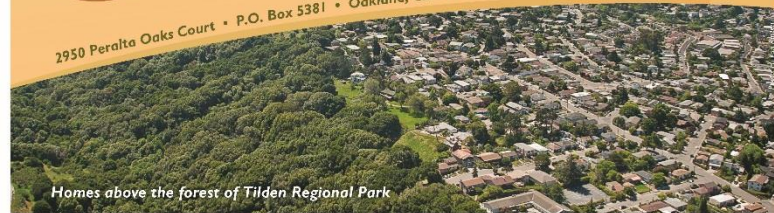
Firefighters remove hazardous vegetation

In 2004, East Bay voters in the cities of Oakland, Berkeley, Richmond, Alameda, San Pablo, El Cerrito, Albany, Emeryville, and Piedmont approved Measure CC to improve park facilities, protect the environment and open space, enhance public access, and maintain public safety. However, Measure CC is set to expire soon.

Learn more online in English, en Español, and in Chinese at [ebparks.org/2004MeasureCC](http://ebparks.org/2004MeasureCC)



2950 Peralta Oaks Court • P.O. Box 5381 • Oakland, CA 94605 • 1-888-EBPARKS • [ebparks.org](http://ebparks.org)



Homes above the forest of Tilden Regional Park

**East Bay**  
Regional Park District  
*Healthy Parks Healthy People*

MEASURE CC COMMITMENTS MADE, IMPROVEMENTS DELIVERED

## Point Pinole Regional Shoreline Dotson Family Marsh and Atlas Road Bridge Entrance Richmond

### Project Facts:

- Restored 60 acres of marsh and wetland habitat
- New entrance on Atlas Road with new bridge, parking lot, bathrooms, picnic tables, and information kiosk
- Major habitat restoration and climate adaptation management to mitigate sea level rise, coastal and inland flooding
- Total investment in the project, including funds from other agencies, was over \$46 million



Restored Dotson Family Marsh

### Habitat Restoration

#### and Climate Change Planning

Voter-approved Measure CC funding has helped restore habitat for endangered species and prepare nature and people for a changing climate by protecting environmentally sensitive marshlands and grasslands like those found at Point Pinole Regional Shoreline. Significant restoration of the marsh and wetland habitat for the black rail was performed in Giant Marsh, on the southern portion of the park, with 2004 Measure CC funding.

### Enhanced Public Access

Thanks to the community's support many area coastlines like those at Point Pinole have been upgraded to improve services, safety, and access. This includes an extension of the Bay Trail and other services at Dotson Family Marsh (previously known as Breuner Marsh) and new Atlas Road Bridge park entrance and staging area.

In 2004, East Bay voters in the cities of Oakland, Berkeley, Richmond, Alameda, San Pablo, El Cerrito, Albany, Emeryville, and Piedmont approved Measure CC to improve park facilities, protect the environment and open space, enhance public access, and maintain public safety. However, Measure CC is set to expire soon.

Learn more online in English, en Español, and in Chinese at [ebparks.org/2004MeasureCC](http://ebparks.org/2004MeasureCC)



2950 Peralta Oaks Court • P.O. Box 5381 • Oakland, CA 94605 • 1-888-EBPARKS • [ebparks.org](http://ebparks.org)



New Atlas Road Bridge

**East Bay**  
Regional Park District  
*Healthy Parks Healthy People*

MEASURE CC COMMITMENTS MADE, IMPROVEMENTS DELIVERED

## Crab Cove Visitor Center at Robert Crown Memorial State Beach Alameda

### Project Facts:

- Crab Cove Visitor Center, part of Robert Crown Memorial State Beach, is now open year-round thanks to Measure CC
- Annually hosts 20,000 visitors, 17,000 special program participants, and 314 class field trips
- Replaced aging picnic tables and barbecues for safer, more enjoyable public use



Visitors enjoy learning about the SF Bay in the Crab Cove Visitor Center

### Visitor Center Now

#### Open Year-round

Thanks to the community's support many area coastlines, hillsides, and parks have been upgraded to improve services, safety, and enhance public access. The Crab Cove Visitor Center in Alameda is now open year-round thanks to Measure CC funding.

### Providing Local Jobs

Voter-approved funding from Measure CC supports Park District jobs that ensure park access, park maintenance, park safety and education programs at our shoreline parks, including Crab Cove Visitor Center in Alameda.



Naturalist interprets at Crab Cove

In 2004, East Bay voters in the cities of Oakland, Berkeley, Richmond, Alameda, San Pablo, El Cerrito, Albany, Emeryville, and Piedmont approved Measure CC to improve park facilities, protect the environment and open space, enhance public access, and maintain public safety. However, Measure CC is set to expire soon.

Learn more online in English, en Español, and in Chinese at [ebparks.org/2004MeasureCC](http://ebparks.org/2004MeasureCC)



2950 Peralta Oaks Court • P.O. Box 5381 • Oakland, CA 94605 • 1-888-EBPARKS • [ebparks.org](http://ebparks.org)



A naturalist interprets Crab Cove shoreline

# Measure CC Accomplishments



## Oakland, Alameda, and Piedmont

Thanks to Measure CC, the East Bay Regional Park District has been able to...

- **Redwood Regional Park** – Increased wildfire prevention management efforts throughout the park. Replaced the Stream Trail waterline and painted the Piedmont Stables at Redwood Regional Park. Stream Trail re-route in process.
- **Sibley Volcanic Regional Preserve, Huckleberry Botanic Regional Preserve and Claremont Canyon Regional Preserve** – Increased wildfire prevention management efforts throughout the park. Provided ongoing stewardship efforts to remove invasive eucalyptus and manage for the native and threatened pallid manzanita. Conducted study of the threatened Alameda whipsnake.
- **Anthony Chabot Regional Park** – Increased wildfire prevention management efforts throughout the park. Installed multiple new restroom facilities along hiking trails and completed sewer connection for better drainage.
- **Martin Luther King Jr. Regional Shoreline** – Installed new boat ramp at Doolittle Drive, increased park and public safety operations. Provided ongoing stewardship efforts to control invasive cordgrass. Began the Tidewater improvement project. Completed permitting study for a new trail along the west shore of the San Leandro Bay along Doolittle Drive.
- **Temescal Regional Recreational Area** – Added new picnic tables and provided sealcoat to all parking lots.
- **Crown Beach State Park** – Funded year-round operations at **Crab Cove Visitor Center**. Improvements to picnic area underway to be completed in Fall of 2017, including picnic tables, barbecues, and water fountains. Completed study and preliminary engineering for the McKay Avenue paving project.
- **Roberts Regional Recreation Area** – Renovated picnic areas with new picnic tables, water fountains and barbecues. Upgraded the ballfield irrigation and drainage system and implemented preventative maintenance program to protect improvements.
- **Alameda Point Regional Shoreline** – Increased police protection along shoreline trails.
- **Fire Hazard Reduction** – Completed necessary environmental documents, National Environmental Policy Act (NEPA) and California Environmental Quality Act (CEQA), to provide wildfire prevention management to ensure **Safe Healthy Forests** in East Bay Hills.



East Bay Regional Park District  
2950 Peralta Oaks Court • P.O. Box 5381 • Oakland, CA 94605 • 1-888-EBPARKS • [ebparks.org](http://ebparks.org)



## Richmond, San Pablo, and El Cerrito

Thanks to Measure CC, the East Bay Regional Park District has been able to...

- **Point Pinole Regional Shoreline** – Restored the Dotson Family Marsh, expanded Bay Trail and constructed new Atlas Road Bridge for increased park access. Increased park operations at Dotson Family Marsh and provided for ongoing efforts to enhance the wetland areas for black rail habitat and restore native grasses. Completed the San Francisco Bay Trail connection to link Wildcat Creek Trail to San Pablo Creek and Point Pinole to the Richmond Parkway. ADA playground to be completed in Fall 2017. Continued invasive eucalyptus removal.
- **Wildcat Canyon Regional Park** – Increased wildfire prevention management efforts throughout the park. Completed watershed sediment study. Installed a new staging area emergency phone for visitor safety. Installed new restrooms. Trail enhancement and erosion control to be completed in 2018.
- **Miller/Knox Regional Shoreline** – Increased ADA accessibility to the rail road museum and restrooms, implemented pavement maintenance program across the park, increased park staffing, and completed the Ferry Point Bay Water Trail. Family and group picnic tables will be replaced in 2017.
- **Point Isabel Regional Shoreline** – Improved restroom facilities and established preventative maintenance programs for paths and parking lots.
- **Point Molate** – Designed two-mile San Francisco Bay Trail segment (65% complete).
- **Fire Hazard Reeducation** – Completed necessary environmental documents, National Environmental Policy Act (NEPA) and California Environmental Quality Act (CEQA), to provide wildfire prevention management to ensure **Safe Healthy Forests** in East Bay Hills.



East Bay Regional Park District  
2950 Peralta Oaks Court • P.O. Box 5381 • Oakland, CA 94605 • 1-888-EBPARKS • [ebparks.org](http://ebparks.org)



## Berkeley, Emeryville, and Albany

Thanks to Measure CC, the East Bay Regional Park District has been able to...

- **Tilden Regional Park** – Increased wildfire prevention management efforts throughout the park. Installed a weather tight enclosure with automatic fire sprinklers for protection of the historic Merry-Go-Round. Constructed new exhibits with ADA access at the **Environmental Education Center**. Installed ADA ramps at the Pony Ride restroom and picnic area for increased access for all. Improved Little Farm's electrical system and replaced barn roofs. Restroom improvements underway to be completed in 2018. Habitat restoration at **Tilden Nature Area** ongoing.
- **McLaughlin Eastshore State Park** – Increased police protection and park personnel throughout park, implemented vegetation management plan, and provided for long term monitoring of the Burrowing Owl. Extended the Bay Trail by 1 mile around Golden Gate Fields at Albany Beach. Signed thirty year operating agreement with California State Parks and began restoration of Albany Beach.
- **Fire Hazard Reduction** – Completed necessary environmental documents, National Environmental Policy Act (NEPA) and California Environmental Quality Act (CEQA), to provide wildfire prevention management and ensure **Safe Healthy Forests** in East Bay Hills.



East Bay Regional Park District  
2950 Peralta Oaks Court • P.O. Box 5381 • Oakland, CA 94605 • 1-888-EBPARKS • [ebparks.org](http://ebparks.org)

# FUTURE PARK NEEDS

## FRAMEWORK FOR FUTURE PROJECTS

- District Mission and Master Plan
- Balance of Access, Conservation and Safety

## PUBLIC PROCESS

- Stakeholder Input
- Community Input  
RICHMOND, Oct. 26  
ALAMEDA, Nov. 4  
OAKLAND, Nov. 8

EBRPD's Park Advisory Committee  
Regional Parks Foundation  
Sierra Club  
CA Native Plant Society  
Hills Emergency Forum  
Diablo Fire Safe Council  
SF Bay Trail Project  
SF Bay Restoration Authority

Golden Gate Audubon  
YMCA of the East Bay  
Bike East Bay  
Trails for Richmond Action Committee  
Pt. Molate Community Advisory Committee  
Citizens for East Shore Parks  
Friends of Crown Beach



Measure CC Public Meeting

East Bay   
Regional Park District  
*Healthy Parks Healthy People*

# We Want to Hear From You...

Public Meetings on Measure CC,  
Future Park Needs

## INPUT STATIONS:

- Public Safety & Wildfire Protection
- Park Infrastructure & Maintenance
- Environmental Stewardship & Habitat Protection

East Bay   
Regional Park District

*Healthy Parks Healthy People*