

KENNEDY GROVE - KG004

FUELS MANAGEMENT PRESCRIPTION

SITE DESCRIPTION AND LOCATION:

The treatment area is 6.1 acres of eucalyptus forest and oak/bay woodland located between Patra Drive and Laurel Loop Trail in Kennedy Grove Regional Recreation Area. Redwoods have been planted along Laurel Loop Trail adjacent to landscaped areas. Homes are located along the northern edge of the site on Patra Drive.

VEGETATION MANAGEMENT GOALS:

Eucalyptus trees with no understory except leaf litter closest to Patra Drive; oak woodland with ferns or herbaceous understory closer to creek; landscaped areas and annual grassland

FUELS MANAGEMENT OBJECTIVES:

1. Reduce fuel volume and modify structure of ladder fuels by thinning understory bays and limbing up bays and redwoods and removing dead fuel accumulations.
2. Reduce potential for crown fires by thinning out smaller eucalyptus.

RESOURCE OBJECTIVES AND CONSIDERATIONS:

- Conduct all initial work during the period from July 31st to Jan. 31st to avoid disturbance to nesting raptors and song birds, as recommended by the District's biologist. If work will occur during nesting season, Stewardship will conduct a pre-work nesting survey within 15-days of work beginning and flag any buffer sites around identified nests.
- Conduct surveys and treatment activities in a manner that will minimize potential adverse effects to Alameda whipsnakes. At rocky outcrops, or within grasslands, work may occur between Oct. 31st and April 1st. If work occurs outside this window, a biological monitor must be present for all activities on site.
- Conduct surveys and treatment activities in oak and bay habitat to identify and avoid dusky-footed woodrat nests. Any nest will have a buffer zone described by the current protocol developed by Stewardship.
- Stream buffer considerations for areas marked in blue on the map (buffer is 30 feet on each side of stream course):
 - No raking of duff in stream buffer zones.
 - Hand removal of downed woody debris in buffer zones may be conducted if material is not embedded in the ground and does not over hang the stream. No embedded material can be removed.
 - No downed woody debris can be removed or limbed up if it overhangs the active channel. Removing downed material over a stream will require permits.
 - Trees within the buffer zones can be limbed up, although no limbing up of trees adjacent (i.e. limbs overhanging channel, tree roots part of bank structure) to the stream channel can occur without acquiring permits.

- o No trees adjacent to stream channels (i.e. limbs overhanging channel, tree roots part of bank structure) shall be removed without permits.
- o Trees within the buffer zones can be cut but will need to be approved by Stewardship prior to removal.
- o If ground disturbance occurs in the buffer zones during fuel reduction activity, erosion control BMPs will need to be applied.

FUELS TREATMENT PRESCRIPTION:

Initial Treatment

Remove eucalyptus stems under 10" dbh and dispose of all material offsite, including branches and tops. To minimize ground disturbance, heavy equipment and other vehicles should remain on fire trails wherever feasible. Cut stumps as close as possible to ground level. Per the District's Integrated Pest Management pest control recommendation, eucalyptus stumps will be treated by a certified applicator with Garlon-4 Ultra within one hour of cutting to prevent re-sprouting.

In the eucalyptus groves, remove accumulations of surface fuels such as forest litter, downed logs, branches, bark, and leaves, with minimal disturbance to duff layer. Logs determined to be imbedded in the soil will be left in place.

In the riparian areas and along Laurel Loop, limb up redwoods and bays up to approximately 6 feet from the forest floor. All cut material will be removed and disposed of offsite.

Hazard Trees

Though not necessarily posing a significant fuels management problem, hazardous pines and eucalyptus trees along trails, near homes, or overhanging stream area should be assessed by park staff and treated appropriately.

Follow-up/Maintenance (Note: if initial treatment is spread over more than one year, adjust the maintenance schedule as needed to accommodate)

YEAR	FUELS TREATMENT
01	Initial Treatment.
02-03	Remove eucalyptus seedlings and treat eucalyptus resprouts with herbicide.
04	Monitor site for weed invasion; remove or treat weeds with herbicide.
05	Reduce/remove ladder and surface fuels that have accumulated since year 1. Remove eucalyptus seedlings, cut eucalyptus sprouts, and treat with herbicide. Monitor site for other weed invasion; remove or treat weeds with herbicide.
10	Reduce/remove ladder and surface fuels that have accumulated since year 1. Remove eucalyptus seedlings, cut eucalyptus sprouts, and treat with herbicide.
15	Reduce/remove ladder and surface fuels that have accumulated since year 1. Remove eucalyptus seedlings, cut eucalyptus sprouts, and treat with herbicide.
20	Reduce/remove ladder and surface fuels that have accumulated since year 1. Remove eucalyptus seedlings, cut eucalyptus sprouts, and treat with herbicide.
25	Reduce/remove ladder and surface fuels that have accumulated since year 1. Remove eucalyptus seedlings, cut eucalyptus sprouts, and treat with herbicide.
30	Reduce/remove ladder and surface fuels that have accumulated since year 1. Remove eucalyptus seedlings, cut eucalyptus sprouts, and treat with herbicide.

MONITORING:

Staff from the District's Fire Department, Planning/Stewardship, and Operations will evaluate the success and efficacy of the initial and follow-up fuels treatments. Monitoring results will be documented.

PRESCRIPTION PREPARED BY:

Brad Gallup
Fire Captain, EBRPD

[Signature]
Signature

8/23/12
Date

REVIEW AND APPROVAL:

This prescription meets the District's standards for fuels management, natural resource protection and achievement of Best Management Practices according to the Wildfire Hazard Reduction and Resource Management Plan and is consistent with the mitigation measures contained in the EIR:

JOHN R. SWANSON
Fire Chief, EBRPD

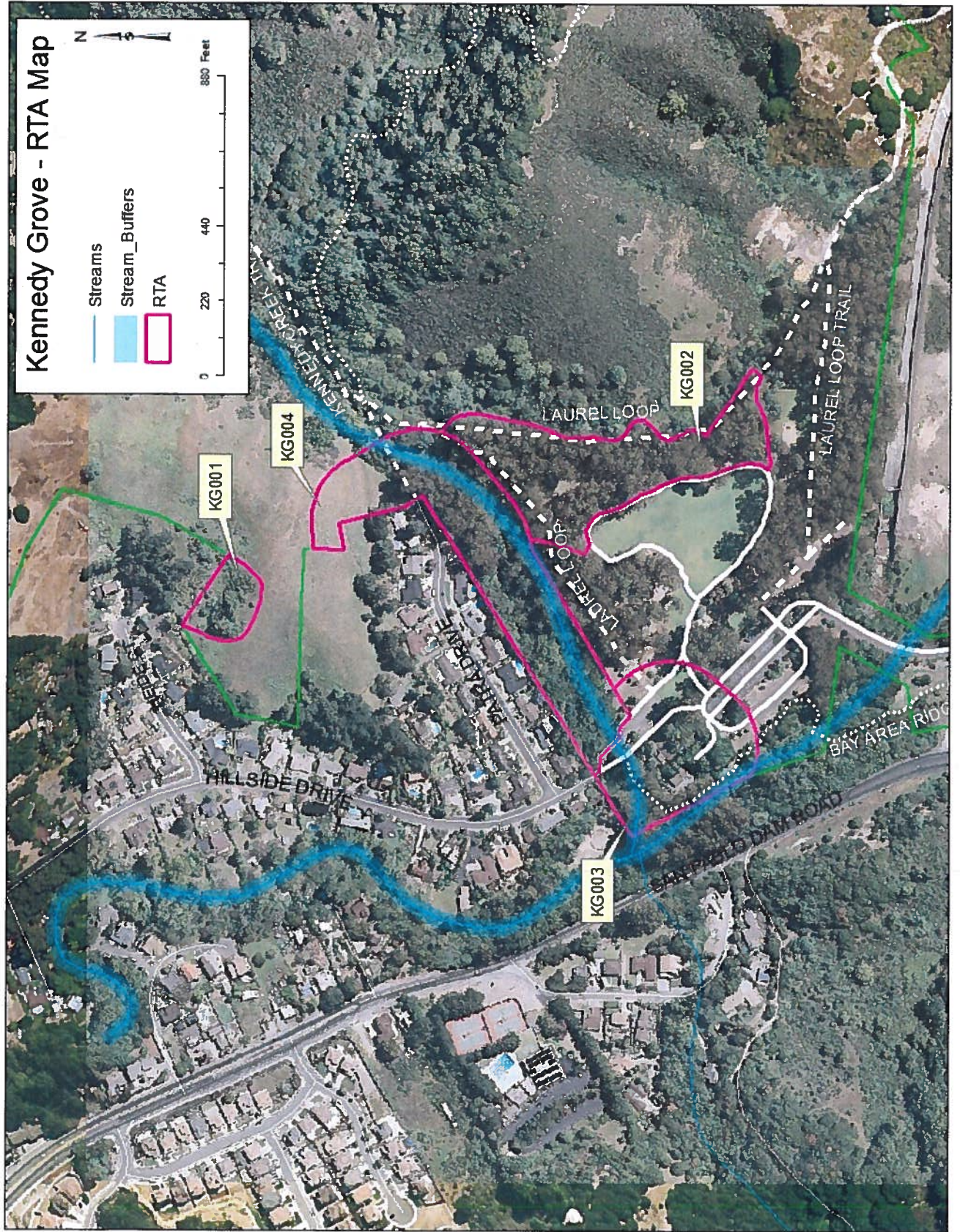
[Signature]
Signature

08.29.2012
Date

NEAL FUJITA
Stewardship Manager, EBRPD

[Signature]
Signature

8/29/12
Date



Kennedy Grove KG004 Fuels Management Prescription
8/23/2012