

SEE NOTES ON SHEET 3



WOOD BENCH - PLAN AND ELEVATION

REVIEWED BY THE PARK STANDARDS COMMITTEE, AND APPROVED BY THE CHIEF OF DESIGN & CONSTRUCTION

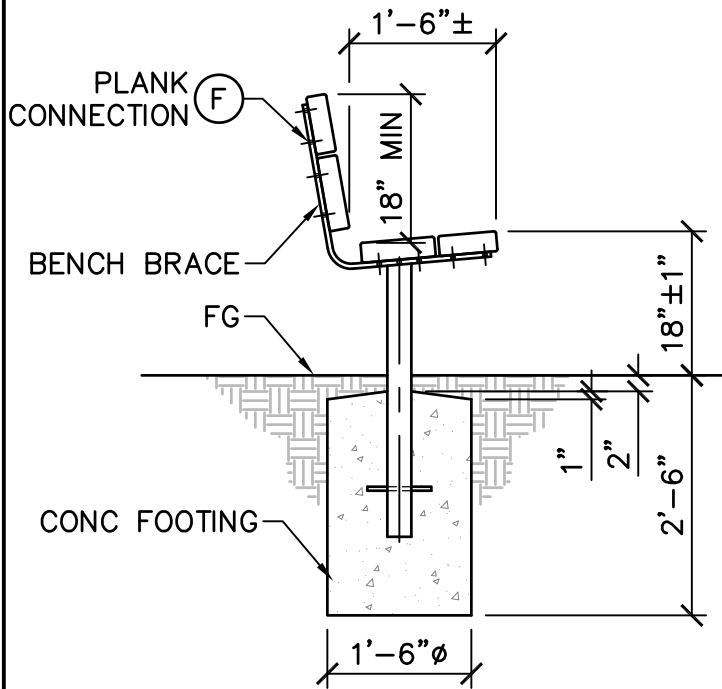
L. Gajjar

9/15/2020

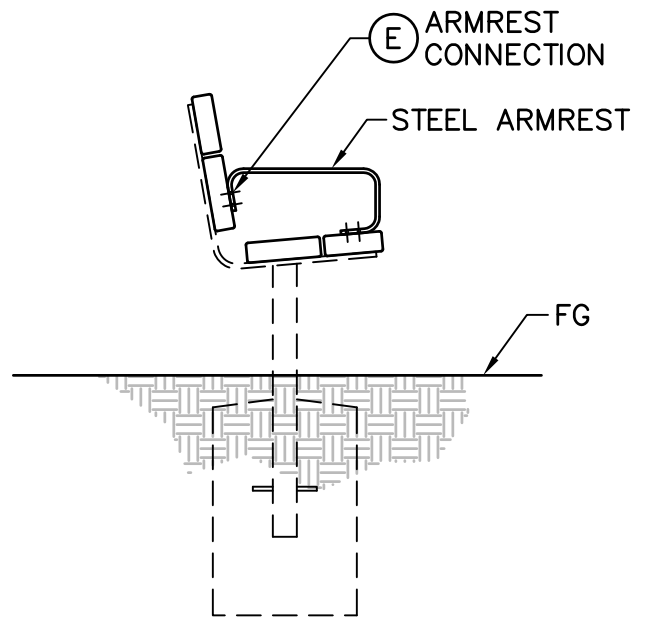
EAST BAY REGIONAL PARK DISTRICT - STANDARD PLANS

STD PLAN
503
 SHEET 1 OF 3
 NOT TO SCALE

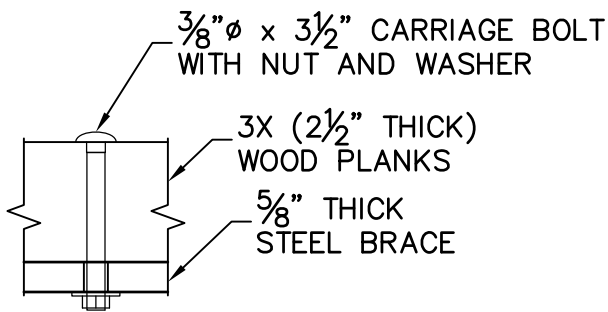
SEE NOTES ON SHEET 3



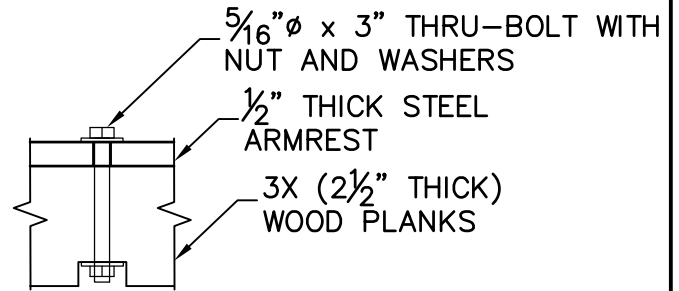
(D) SECTION AT FOOTING



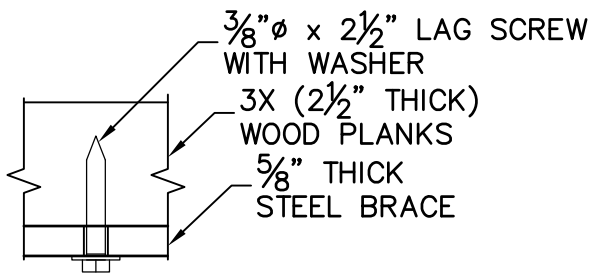
(C) SECTION AT ARMREST



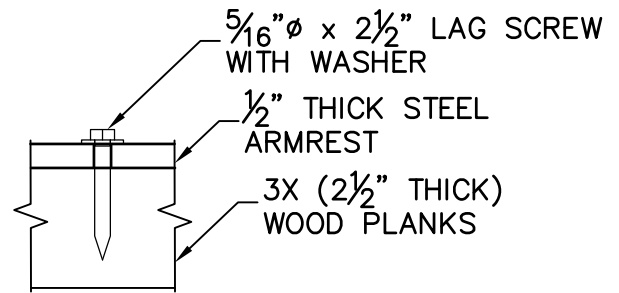
CARRIAGE BOLT OPTION



THRU-BOLT OPTION



LAG SCREW OPTION



LAG SCREW OPTION

(F) PLANK CONNECTIONS

(E) ARMREST CONNECTIONS



WOOD BENCH - SECTIONS AND DETAILS

REVIEWED BY THE PARK STANDARDS COMMITTEE, AND APPROVED BY THE CHIEF OF DESIGN & CONSTRUCTION

L. Gajjar

9/15/2020

STD PLAN

503

SHEET 2 OF 3
NOT TO SCALE

ADA ACCESSIBILITY

1. AT LEAST 20%, BUT NOT LESS THAN ONE, OF THE FIXED BENCHES PROVIDED IN A FACILITY OR A BUILDING SHALL BE ACCESSIBLE AND SHALL BE DISPERSED AMONG THE TYPES PROVIDED.
2. THE CLEAR GROUND SPACE AND ACCESSIBLE APPROACH DIMENSIONS SHOWN ON SHEET 1 ARE THE MINIMUMS REQUIRED AT ADA ACCESSIBLE BENCH LOCATIONS.
3. ACCESSIBLE APPROACH MAY BE LOCATED AT EITHER END OF THE BENCH.
4. THE CLEAR GROUND SPACE AND ACCESSIBLE APPROACH SHALL NOT OVERLAP PATHS OF TRAVEL, OUTDOOR RECREATION ROUTES, TRAILS, OR OTHER REQUIRED CLEAR SPACE.
5. THE CLEAR GROUND SPACE AND ACCESSIBLE APPROACH AREA SHALL BE FIRM AND STABLE. RECOMMENDED AC OR CONCRETE PAVED SURFACES SHALL SLOPE A MAXIMUM OF 2% MEASURED IN ANY DIRECTION. WHERE THE SURFACE IS NOT PAVED, THE SLOPE MAY BE INCREASED TO A MAXIMUM OF 5% ONLY AS REQUIRED TO PROVIDE ADEQUATE DRAINAGE.
6. A SINGLE ARMREST AT THE MIDDLE OF THE BENCH OR AT THE END FARTHEST FROM THE ACCESSIBLE APPROACH IS REQUIRED AT ADA ACCESSIBLE BENCHES. IN NO CASE SHALL AN ARMREST BE PLACED ADJACENT TO AN ACCESSIBLE APPROACH. WHERE NOT ACCESSIBLE, ARMRESTS MAY BE INSTALLED PER DESIGNER'S PREFERENCE.
7. BENCH DETAILS COMPLY WITH THE STATE OF CALIFORNIA DEPARTMENT OF PARKS AND RECREATION 11/28/2018 MEMO ON BENCHES AND PICNIC TABLES. NOTE THAT CBC 11B-903 IS NOT APPLICABLE TO OUTDOOR SEATING.

MATERIALS

8. WOOD PLANKS
 - 8.1. 3X8 (2½" X 7¼") AND 3X10 (2½" X 9¼") S4S EE (EASED EDGES).
 - 8.2. SEASONED DRY WITH A MAX MOISTURE CONTENT OF 19%
 - 8.3. WESTERN RED CEDAR NO. 2 CLEAR OR BETTER, OR FSC CERTIFIED REDWOOD CONSTRUCTION HEART OR BETTER (EXCEPT THAT IF BENCH IS TO BE A MEMORIAL BENCH THEN WOOD PLANKS SHALL ONLY BE WESTERN RED CEDAR).
9. FASTENERS SHALL BE HOT-DIP GALVANIZED PER ASTM A153.
10. CONCRETE SHALL BE COMMERCIAL 5-SACK PRE-MIX CONCRETE OR EQUIVALENT.
11. SEE STANDARD PLAN 503F FOR FABRICATION OF STEEL BRACES AND ARMRESTS.
12. WOOD PLANKS, FASTENERS, BENCH BRACES, AND ARMRESTS, MAY BE AVAILABLE AT PARK DISTRICT CENTRAL STORES, FOR PURCHASE BY PARK DISTRICT STAFF ONLY.

WORKMANSHIP

13. LOCATE UNDERGROUND UTILITIES PRIOR TO DIGGING. CALL USA (UNDERGROUND SERVICE ALERT) 1-800-277-2600, MON THRU FRI 6AM TO 7PM, A MINIMUM 2 WORKING DAYS WITH A MAXIMUM 14 CALENDAR DAYS, TO OBTAIN A TICKET. CONTACT THE DISTRICT INSPECTOR OR PARK SUPERVISOR FOR DISTRICT UTILITIES NOT LOCATED BY USA.
14. WOOD PLANKS SHALL NOT BE COATED (DO NOT SEAL, PAINT, OR STAIN).
15. ENDS OF WOOD PLANKS SHALL BE EASED ¼" RADIUS ALL AROUND.
16. PROJECTING BOLT ENDS SHALL BE CUT FLUSH WITH PLANKS AFTER TIGHTENING. ANY SHARP EDGES OR SHARP POINTS SHALL BE MADE DULL.
17. INSTALL WASHERS BELOW BOLT HEADS AND NUTS BEARING ON STEEL.
18. BENCH BRACES SHALL BE INSTALLED PLUMB AT CENTER OF CONCRETE FOOTING.
19. ANY DAMAGE TO PAINTED METAL FINISH SHALL BE TOUCHED-UP WITH PRIMER AND PAINT PER DISTRICT STANDARD PLAN 003, PAINTING AND STAINING SPECIFICATION.
20. FOR MEMORIAL PLAQUE AND MOUNTING INFORMATION, CONTACT THE DISTRICT CREATIVE DESIGN GROUP AT (510) 544-3223.



WOOD BENCH - NOTES

REVIEWED BY THE PARK STANDARDS COMMITTEE, AND APPROVED BY THE CHIEF OF DESIGN & CONSTRUCTION

L. Gajjar

9/15/2020

EAST BAY REGIONAL PARK DISTRICT - STANDARD PLANS

STD PLAN
503
SHEET **3** OF **3**
NOT TO SCALE