

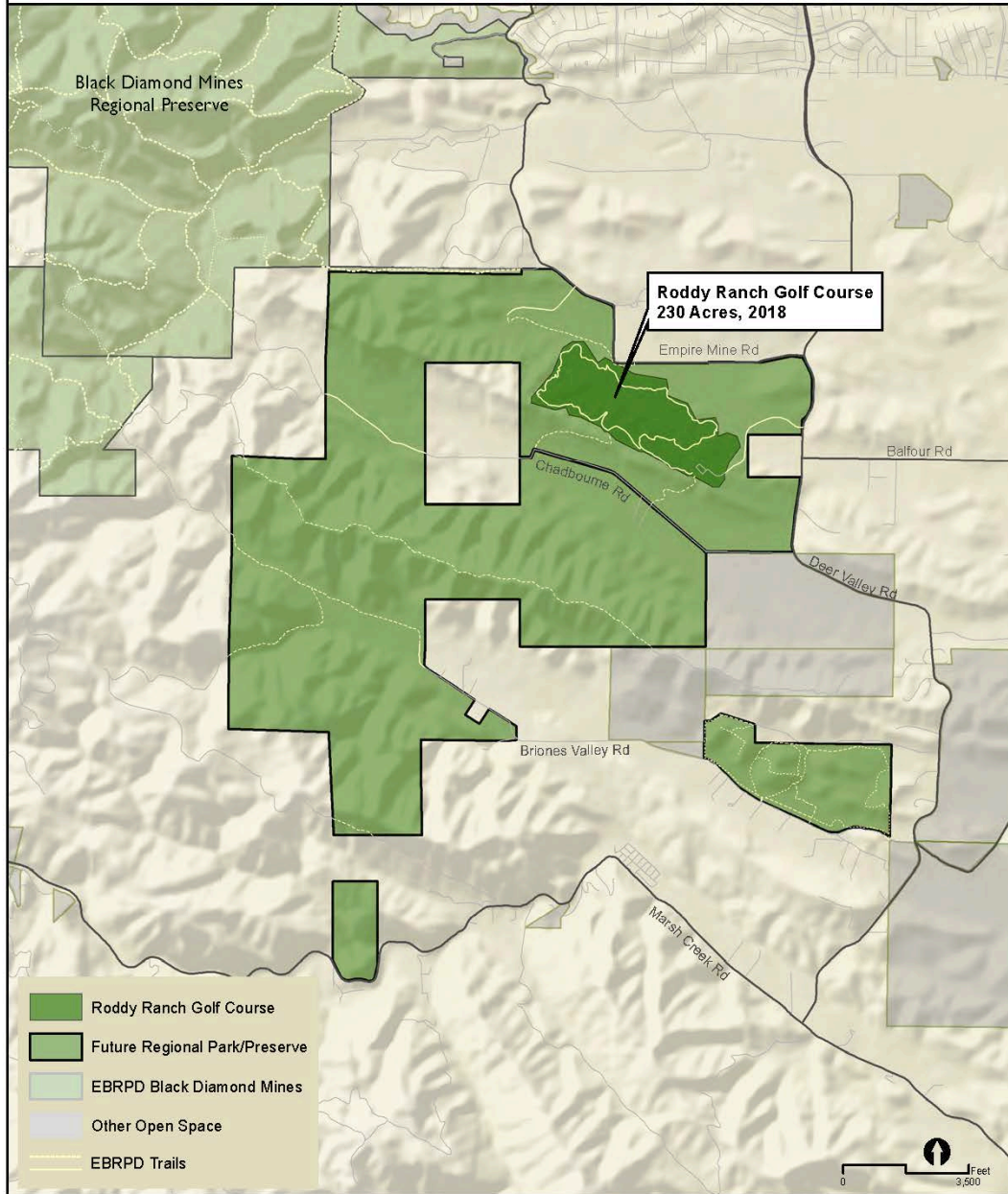
Roddy Ranch Golf Course

Public access and habitat restoration plan

Park Advisory Committee, May 18, 2020
Devan Reiff, AICP – Principal Planner



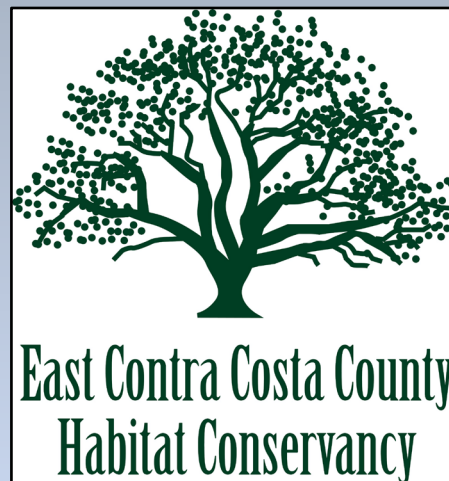
Photo: Stephen Joseph



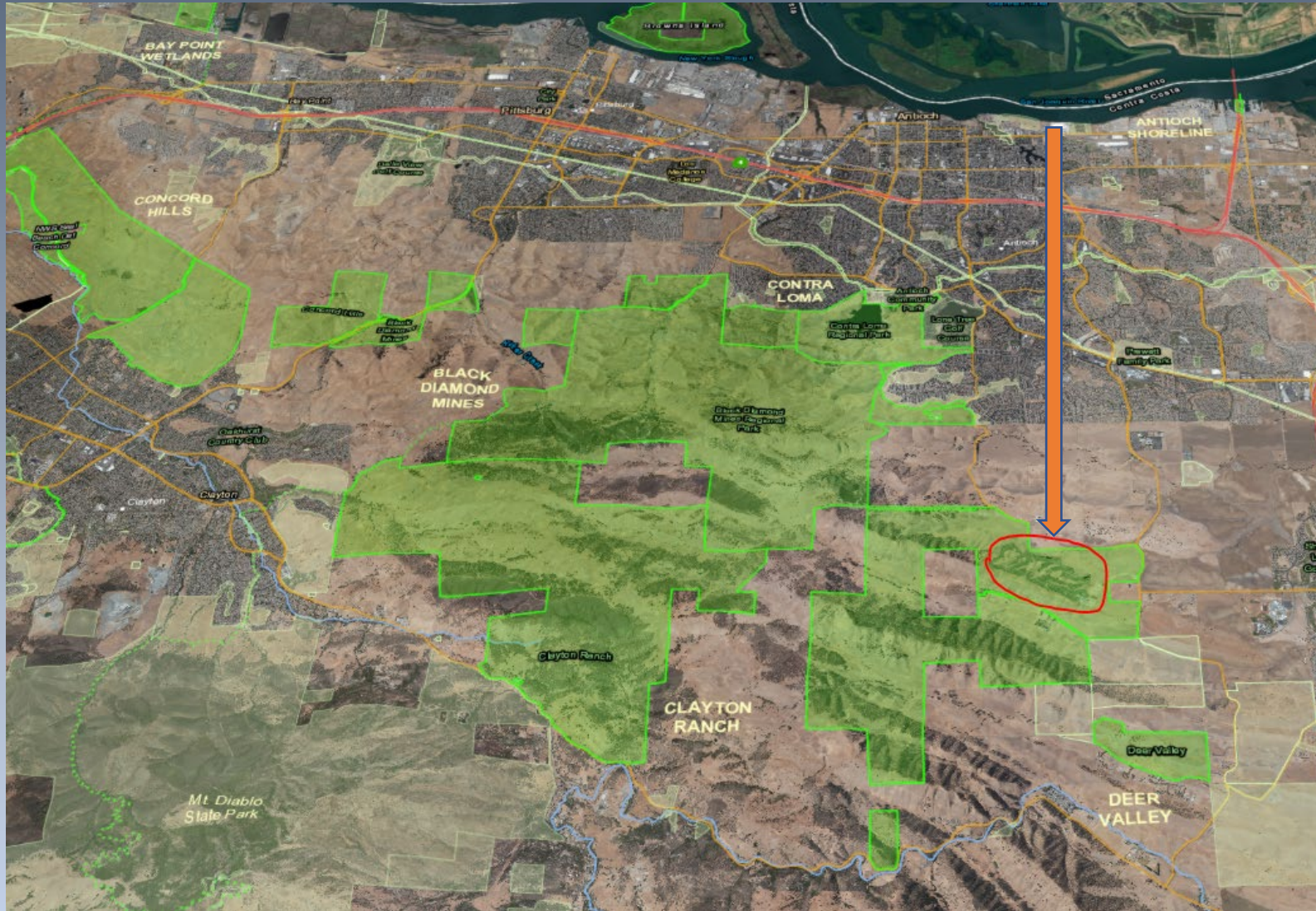
Roddy Ranch Golf Course acquired by Park District in 2018

A partnership with Habitat Conservancy:

- Located in the City of Antioch
- 260 acres of former golf course
- Key piece of larger 3,500-acre Regional Preserve --“Deer Valley”
- Open golf course first to public access and habitat restoration
- Restoration Design Group and Nomad Ecology as consultants



Critical open space in East Contra Costa County



Part of the expanding Park District network in Contra Costa County:

1. Concord Hills
2. Black Diamond Mines (LUPA being prepared)
3. More Habitat Conservancy acquisitions to come in East County

What's on the site today



1.

1. Cement golf cart paths
2. Irrigation and stormwater ponds
3. Parking lot for future staging area



2.



3.

What's on the site today



What's on the site today – Great Views



Photo: Abby Fateman



Park Planning– Public Input

- *PAC #1: Project Initiation*
- *Stakeholder interviews (Save Mt. Diablo, City of Antioch)*
- *Community engagement events*
- *PAC #2: review of park alternatives*
- *PAC #3: selected park alternative*
- *Plan adoption events and meetings*



Park Planning – Next Steps



Photo: DECO

- Existing Conditions reports
- Project web page
- Stakeholder interviews
- Alternatives
- Planning period: 12-18 months

Part of a trend of golf course conversions

Trust for Public Land reports that 800 golf courses have closed in past decade.

Twenty have been converted to other uses, and ten are public parks.

Golf Course to Parks	State
Stockton	California
San Geronimo Valley (Marin Cnty)	California
Carmel Valley	California
Santa Barbara	California
Portland	Oregon
Detroit	Michigan

Palo Corona Regional Park – Monterey Peninsula Regional Park District



Palo Corona Regional Park – Monterey Peninsula Regional Park District

PREFERRED ALTERNATIVE



Figure 14: Rancho Cañada Unit Preferred Alternative Illustrative Plan

DESIGNWORKSHOP 83

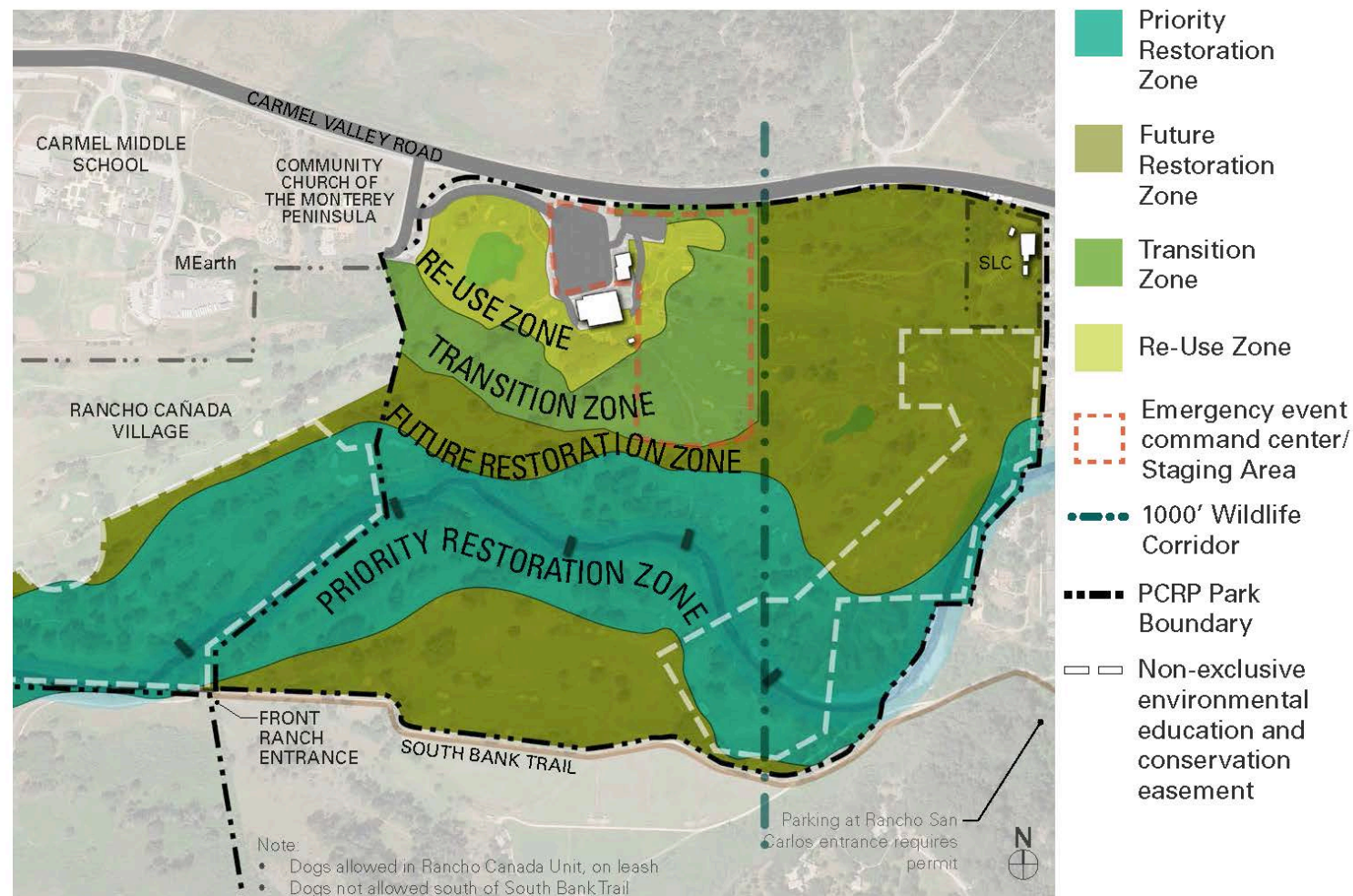
Rancho Canada GC:

- 185 acres
- 36 holes
- 300 space parking lot
- Club houses for rentals
- Half of course open now as parkland
- Provides staging and unlimited public access to larger wilderness park to the south.

Palo Corona Regional Park – Monterey Peninsula Regional Park District

- Preparing Habitat Restoration Plan now
- Emphasis on wildlife corridors, connecting different ecosystems
- Carmel Middle School will do habitat projects with MEarth non- profit
- Native plant test plots

PREFERRED ALTERNATIVE - RANCHO CAÑADA UNIT



PALO CORONA REGIONAL PARK • MPRPD BOARD MEETING - APRIL 2018

DESIGNWORKSHOP

U.C. Santa Barbara – Ocean Meadows Golf Course conversion



- 100-acre restoration at north side of Campus
- 40-acres are wetland restoration
- Trust for Public land acquired and transferred to UCSB.
- Restoration plan takes 16 different funders!

U.C. Santa Barbara – Ocean Meadows Golf Course conversion

© bill dewey



Community Opportunities:

- Monthly volunteer plantings
- Saturday Tree Plantings
- Thursday Green house seedling transplanting
- Group volunteer events
- Photo and wildlife spotting site
- UCSB Student interns

200,000 plants in two years!

Roddy Ranch Golf Course

Public access and habitat restoration plan

Park Advisory Committee, May 18, 2020
Devan Reiff, AICP – Principal Planner



Photo: Stephen Joseph