

Central Mine

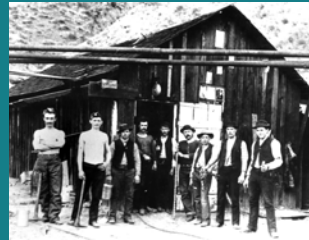
These mine wastes are all that remain of the Central Mine and the town of Stewartville. The mine operated from the 1860s to about 1900. Its production was exceeded only by the Black Diamond Mine at Nortonville, about two miles to the west.

The main entry to the mine was at the top of this waste pile. The entry tunnel was driven approximately 2,000 feet through the ridge, to save more than two miles of horse and wagon haulage to Antioch. Later, a branch of the Empire Mine Railroad was run to Stewartville and cartage became unnecessary.



Black Diamond Mines Regional Preserve, EBRPD Collection

Stewartville, June 9, 1896.
Black Diamond Mines Regional Preserve, EBRPD,
Edna Gibble Collection



Miners at the Central Mine, Stewartville,
circa 1880.
Black Diamond Mines Regional Preserve,
EBRPD, Edna Gibble Collection



Miners and families at the Central Mine,
Stewartville, date unknown.
Black Diamond Mines Regional Preserve,
EBRPD, George Vivian Collection



Empire Railroad on trestle, circa 1875.
Black Diamond Mines Regional Preserve, EBRPD,
Dan McKellips/James E. Boynton Collection



Empire Railroad at General Store,
Stewartville (date unknown)
Black Diamond Mines Regional Preserve, EBRPD,
Dan McKellips/James E. Boynton Collection



Stewartville Hotel,
June 9, 1889
Black Diamond Mines Regional Preserve,
EBRPD, Edna Gibble Collection