

# Trail User Working Group

Park Advisory Committee  
January 24, 2022

Brian Holt, Chief of Planning, Trails, & GIS  
Sean Dougan, Trails Program Manager  
Devan Reiff, Principal Planner

East Bay   
Regional Park District

## PURPOSE OF THE TRAIL USER WORKING GROUP

### Planning for new trails in new parklands

- Address concerns about trail conflict
- Understand interests of all trail users
- Facilitate sustainable trail development and resource protection

PLANNING FOR NEW TRAILS IN NEW PARKLANDS  
2013 Master Plan Policy

*“The District will expand its unpaved multi-use trail system as additional acreage and new parks are added. The District will continue to provide multi-use trails to link parks and to provide access to park visitor destinations.” - RFA4*

## PLANNING FOR NEW TRAILS IN NEW PARKLANDS

# 2013 Master Plan Policy

*“[T]rails will be designed and designated to accommodate either single- or multiple users, as appropriate, based on location, recreational intensity, environmental and safety considerations” – RFA2*

## TRAIL DEVELOPMENT IN NEW PARKLANDS

### District expansion since 1995

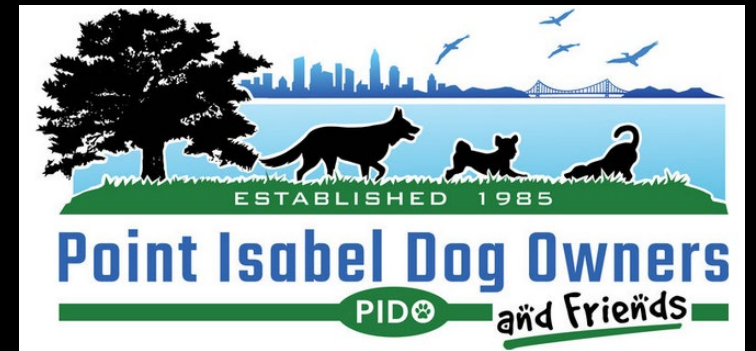
- ✓ Parkland added: Over 57,000 acres
- ✓ New trails constructed: 13 miles
  - Percent in Crockett Hills: 66% (8.75 miles)
  - Percent in new parklands: 0%





## Who is on it?

- Bicyclists
- Conservation
- Dog Owners
- Equestrians
- Hiking
- Land Trusts
- Regional Perspectives
- Youth
- Disabled communities
- EBRPD Park Advisory Committee
- EBRPD Multicultural Advisory Committee
- Inclusive communities
- Regional Parks Foundation





# Meetings

- Group met 7 times in virtual meetings between August 2020 and October 2021
- Heard from different user perspectives
- Discussed and debated potential solutions
- Draft report reviewed
- Polling tool used for rating consensus on trails planning solutions
- All meetings recorded w/ notes posted here

<https://www.ebparks.org/trail-user-working-group-2020-2021>

## GROUP 3: Reporter - Adele Ho

A variety of experiences for bikers, from family to adrenaline junkies	Most looking for same experiences as other users - enjoyment of trails, nature, fresh air & exercise	Many bikers seeking narrow trails, tech challenges to improve skills	Bike-optimized trails would be appreciated	Close to home so families can ride there with kids	Consequences of conflict between bike and hiker or horse much greater than, say, lack of maintenance	Becomes a public health issue
On narrow trails, moving out of the way means leaving trail, ecological damage	Education: not just EB, but regionwide program and outreach	Need for narrow trails in strategic locations designed for bikes	Not all trails for all users at all times	Some kind of usage management	Dedicated trails or alternate days	

## GROUP 4: Reporter - Kim Thai

Bikers want more challenging trails across park system	Want safety issues addressed	Also better connectivity of trails between parklands	Issues: Safety - constantly having to look out for other users	Risk of having to move out of way quickly, running into poison oak	Focused on solutions	Bike parks	Comprehensive trail plan
Review bike access points and overall inter-jurisdictional flow between parks	Develop plan for landbank lands based on issues with current park lands	New trails: bike only or optimized for bikes	Communication campaigns; bring education to different trail user groups	Need funding for both good environmental analysis re. where trail goes and trail construction	Some existing plans include funding for separate use trails	Tahoe Rim Trail example of good separated-use trail	Design trails for new use not just current use

## GROUP 5: Reporter - Simone Nageon de Lestang

Others touched on most of group's big points	If all want narrow trails, bikers have least opportunity of any user group	Issues: trail safety: conflicts and environmental degradation of social trails	Do trail user conflict survey to have full data on actual conflicts	Solutions: develop access plans for land bank properties
Provide education in the field	Explicit, clear signage on trails; even yield signs take a moment to figure out	Clearer maps that identify trail uses	Advertise trails open to bikes	



# What we heard

- Predictability
- Access for all
- Need to address interest of seniors, youth, BIPOC, and new trail users
- Interest in operation strategies
- Trail user education
- Trail enforcement
- Importance of design
- Need to fully understand environmental impacts
- A transparent and public process
- *And dozens of other suggestions*



# Topics for additional discussion

- ❑ Closing gaps in the regional trail network (e.g. Bay Area Ridge Trail)
- ❑ Demand for mountain bike accessible trails
- ❑ Protecting access for equestrians
- ❑ Operational controls (e.g. one-way trails, alternate use days)
- ❑ Ensuring a transparent and public process
- ❑ Addressing existing trails in currently opened parklands

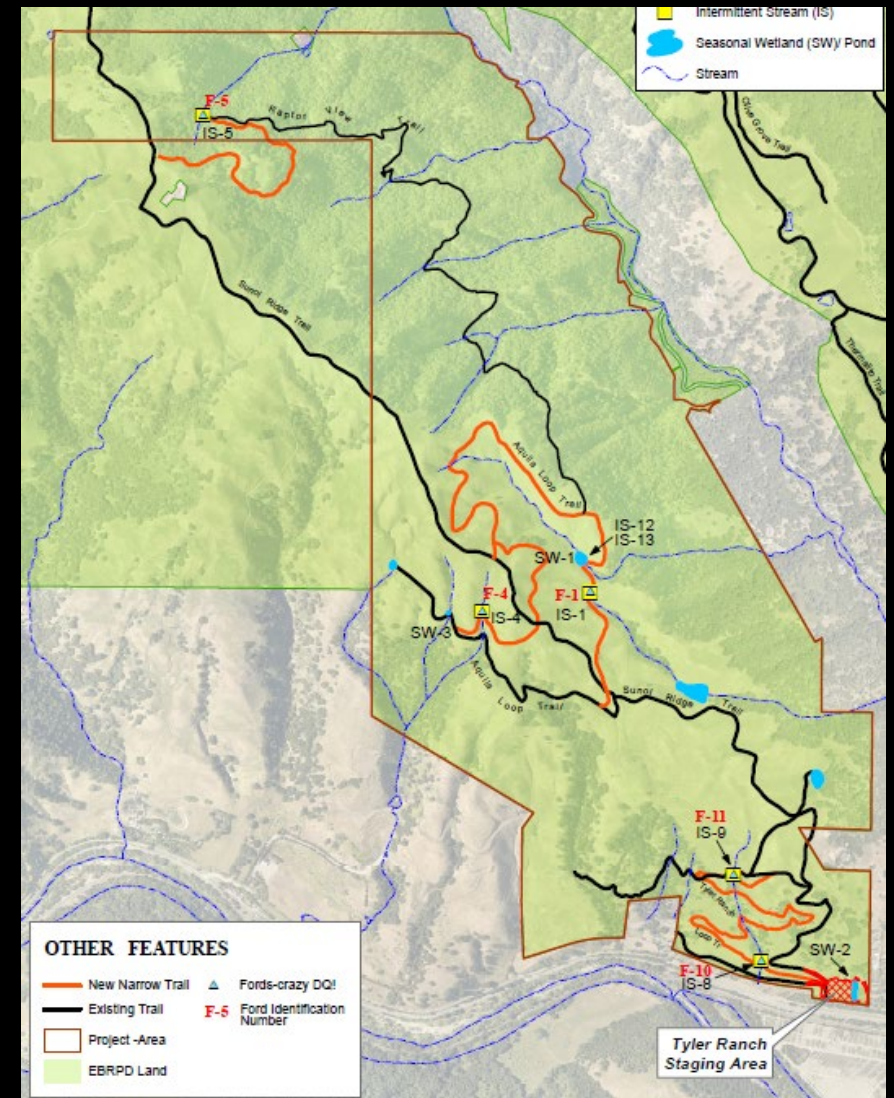


*“The District will expand its unpaved multi-use trail system as additional acreage and new parks are added. The District will continue to provide multi-use trails to link parks and to provide access to park visitor destinations.” - RFA4*

*“[T]rails will be designed and designated to accommodate either single- or multiple users, as appropriate, based on location, recreational intensity, environmental and safety considerations” – RFA2*

# Upcoming Projects

- Roddy Ranch Public Access and Restoration Plan
- Southern Las Trampas Land Use Plan
- Briones Regional Park Pilot Projects
- Wildcat Flow Trail Proposal
- Trail User Education Campaign





## Next steps:

- Last TUWG group meeting February 7, 2022
- Board Executive Committee February 11, 2022
- Summary Report
- TUWG recordings and meeting information available here:  
<https://www.ebparks.org/trail-user-working-group-2020-2021>